

ARCH1101

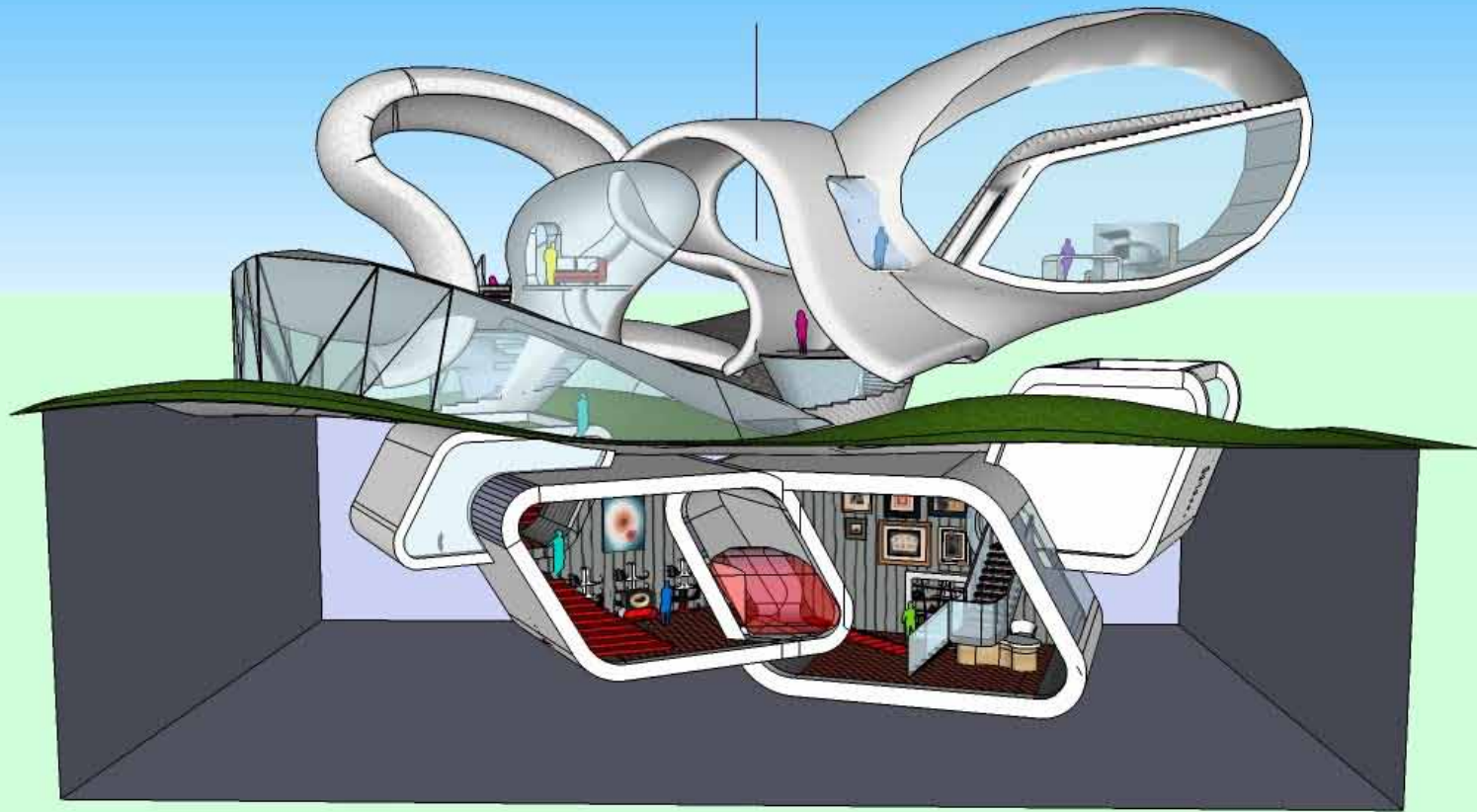
TESTING +

EVALUATION

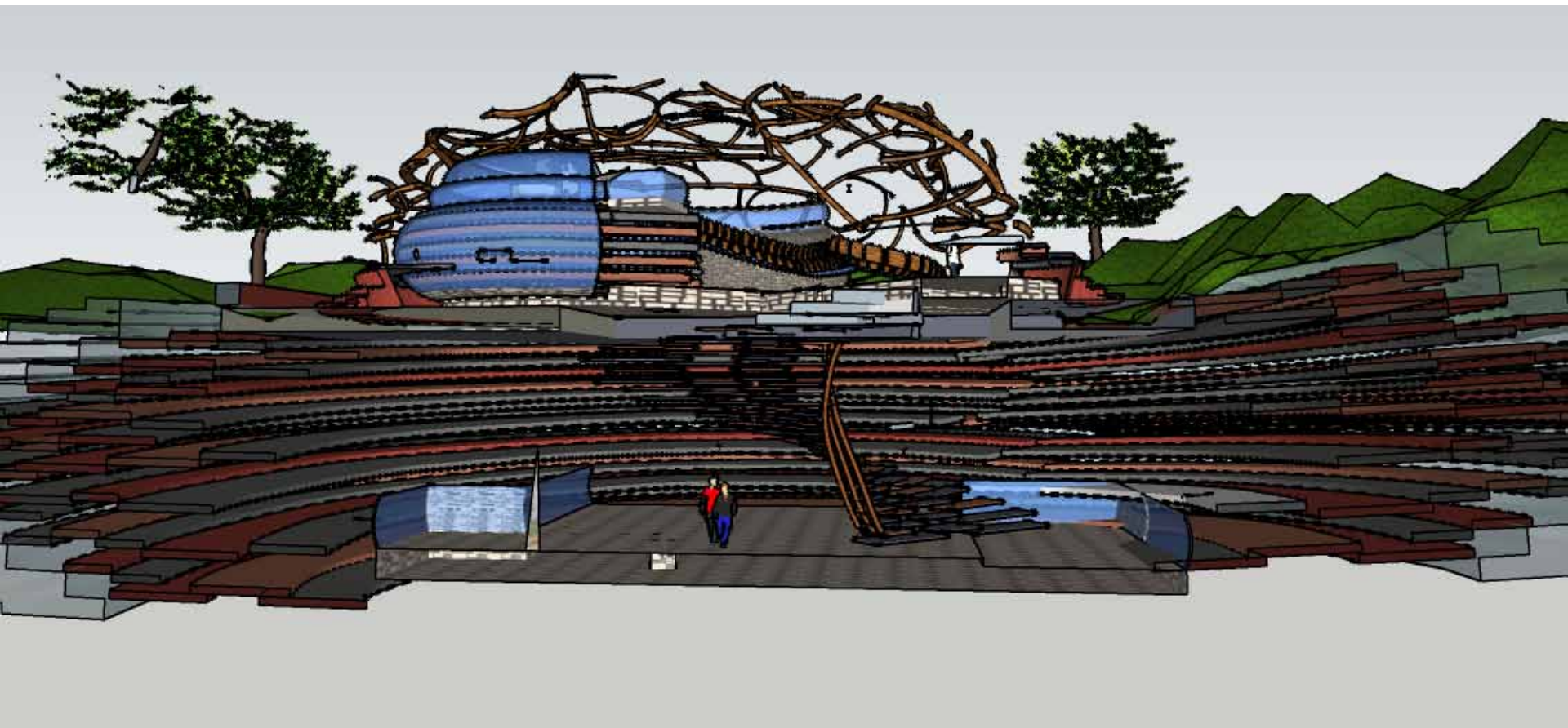
RUSSELL LOWE

EXPERIMENT 1

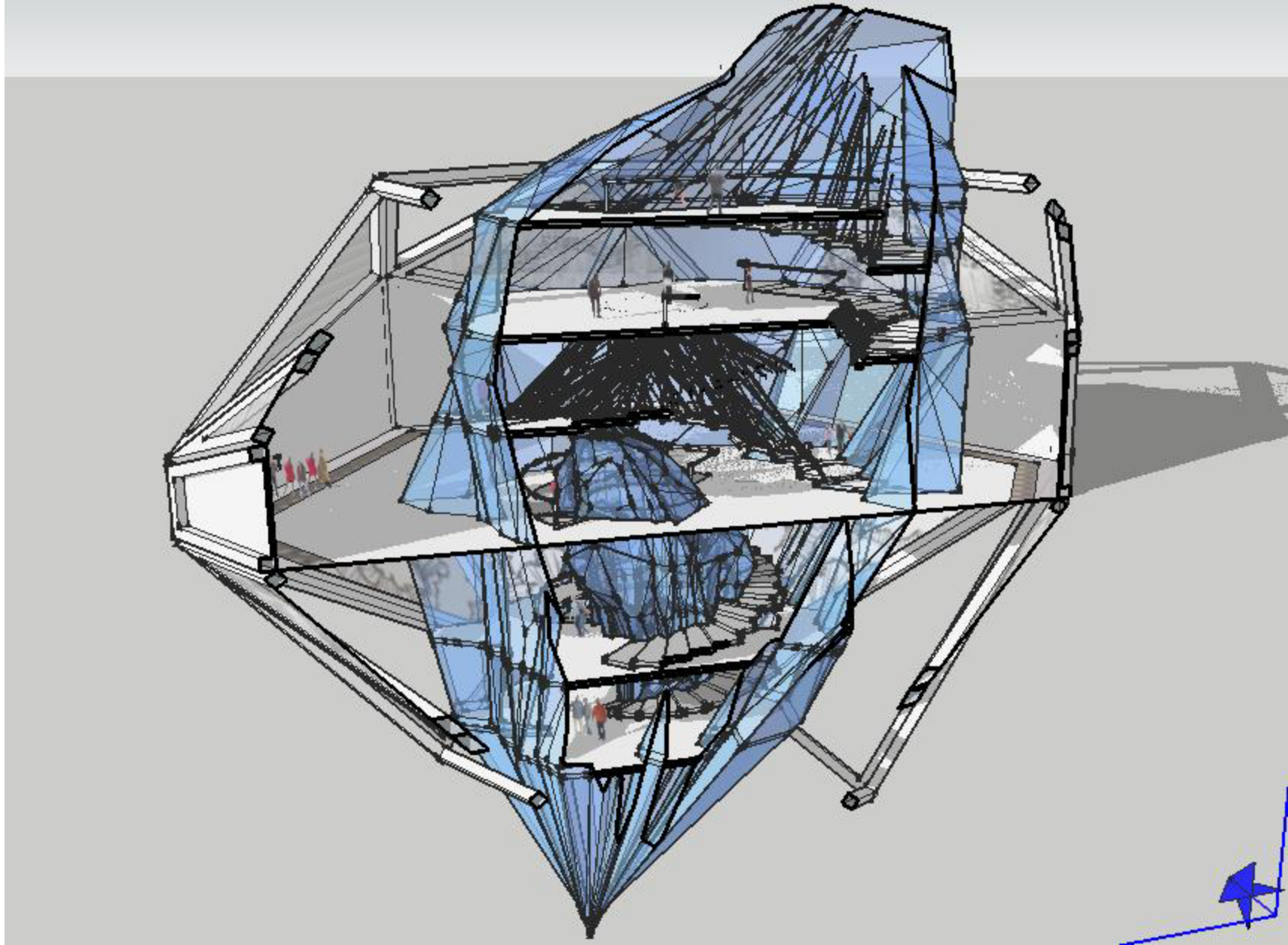
TESTING + EVALUATION



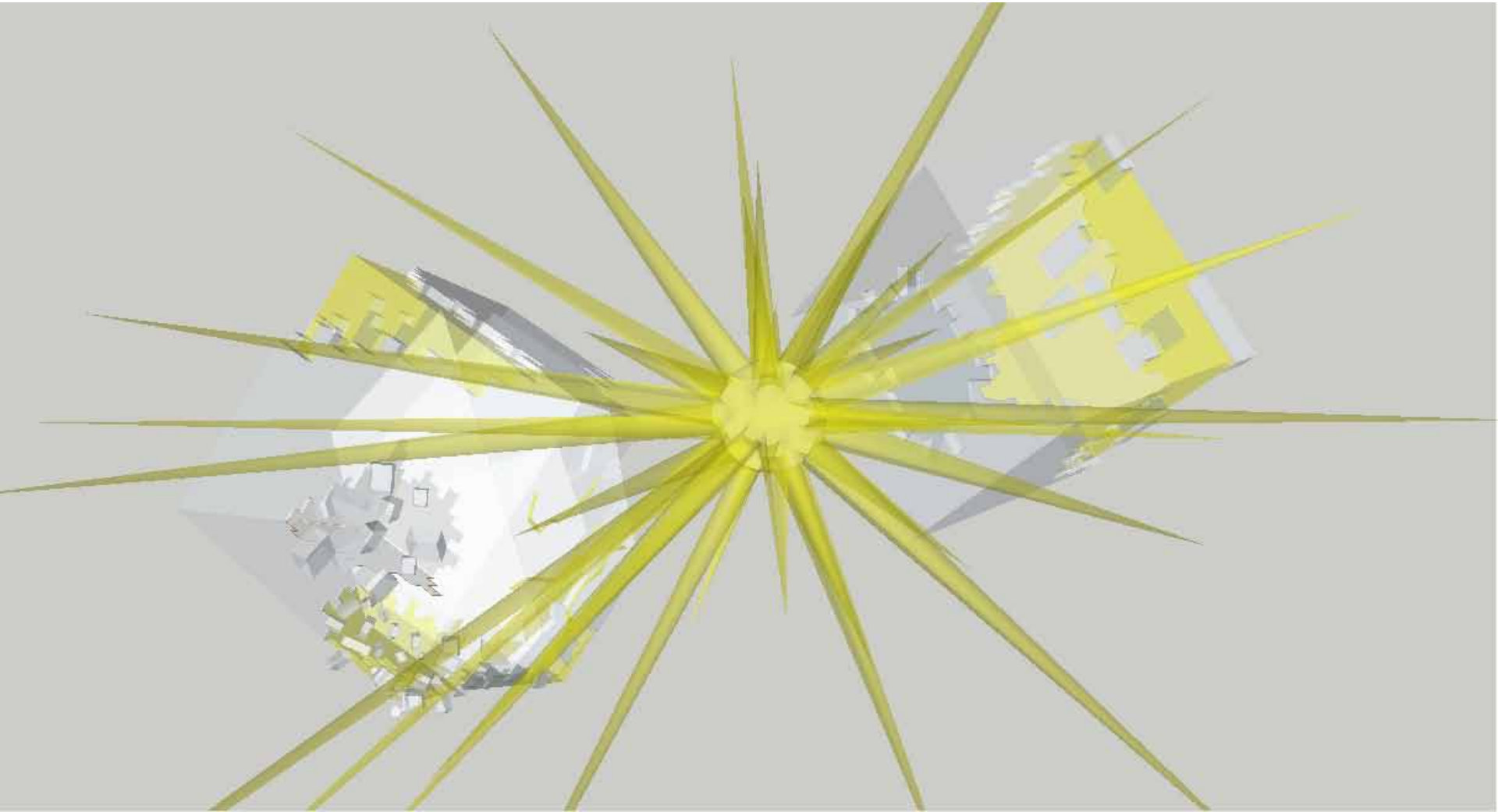
www.jingyukingyao.blogspot.com



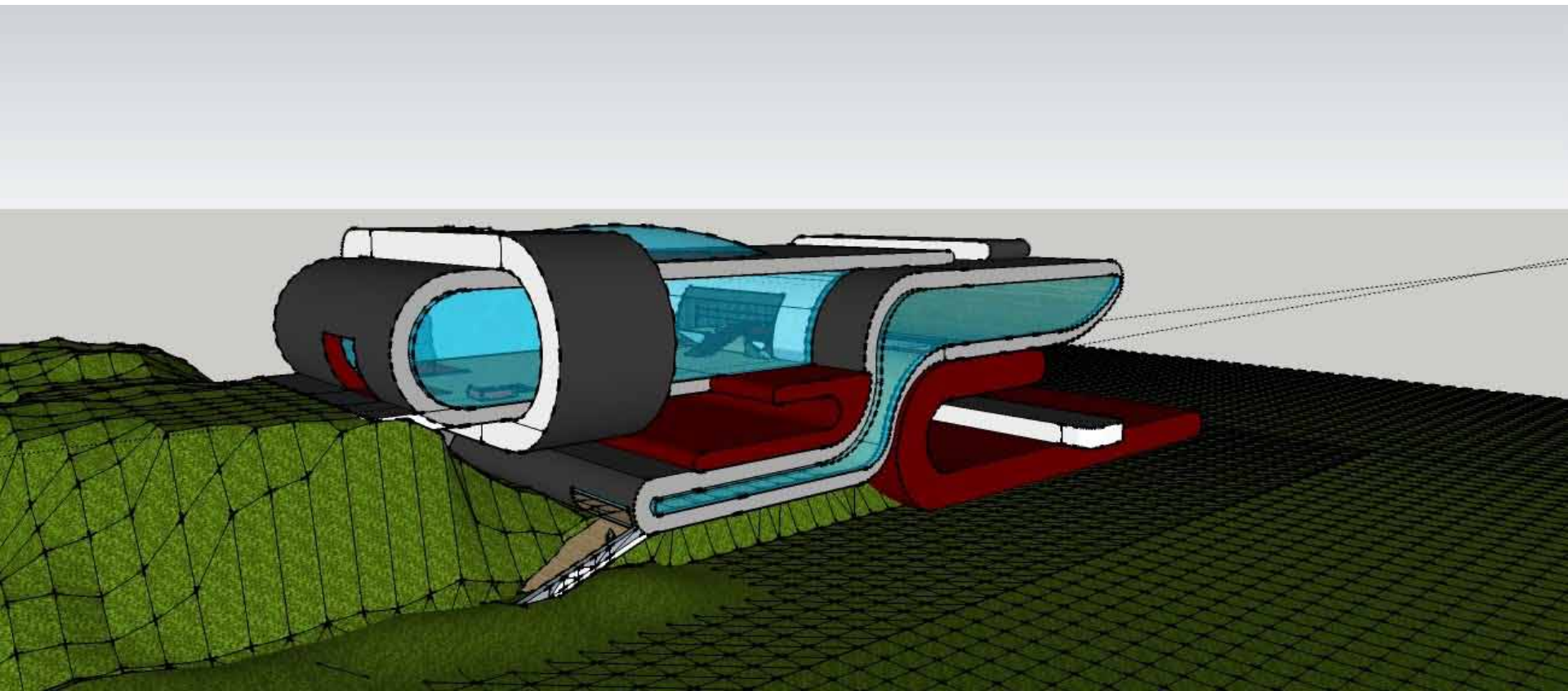
www.ignatlabazine.blogspot.com



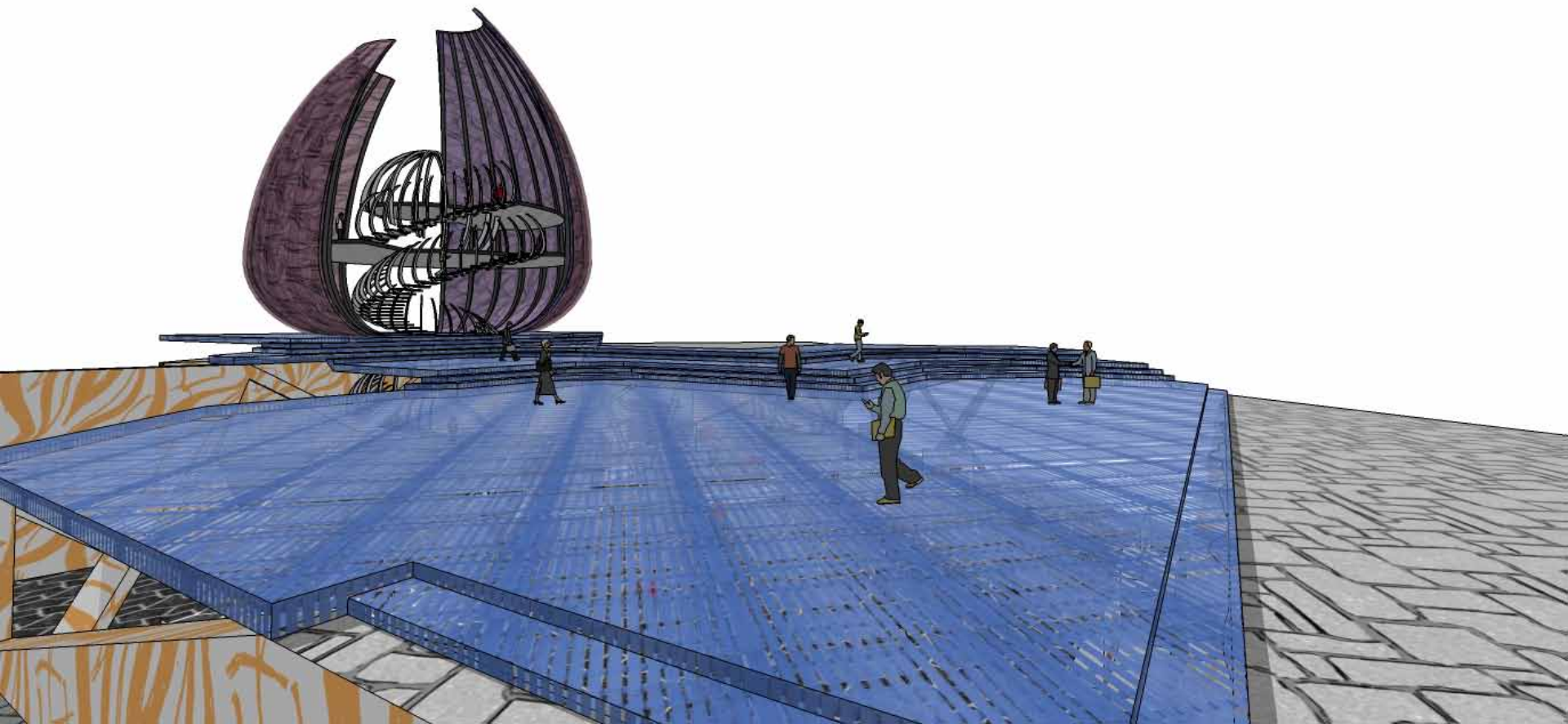
www.anasubotic.blogspot.com/



www.amedalla.blogspot.com



www.bbezri.blogspot.com

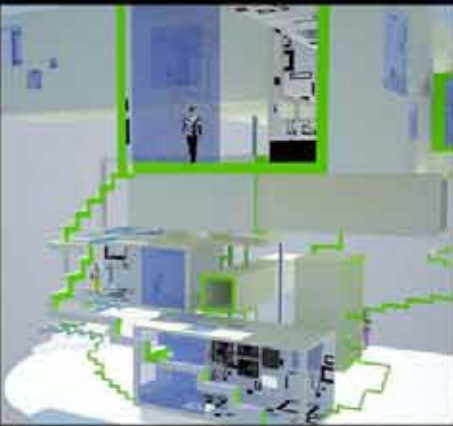
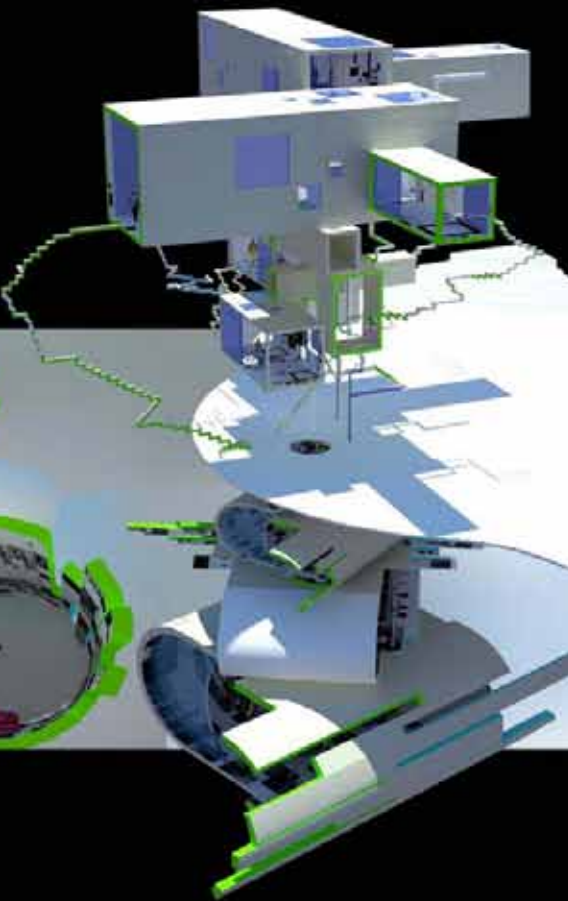


www.architecturekevinsi2010.blogspot.com

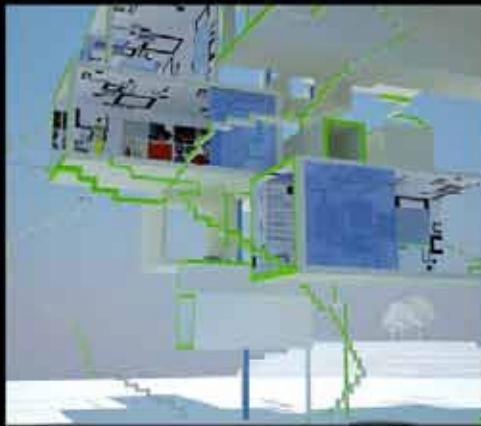


www.annietran03.blogspot.com

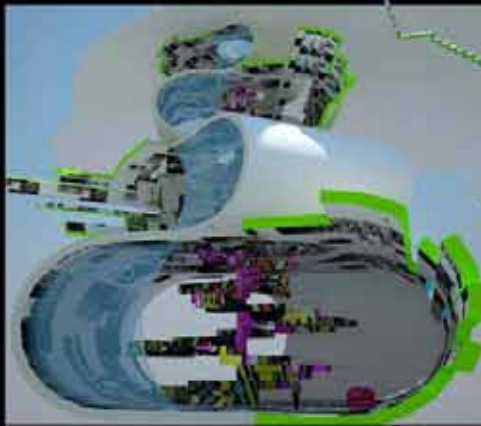
ARCH1101 EXP1 2010 BY RICKY FAN
Final Development Sketchup Model (V-ray rendering)



Interior view1
From above-Studio down to Exhibition spaces
(Gallery1,2 and 3)



Interior view2



Interior view3
From below-Studio up to Exhibition spaces
(Gallery3,2 and 1)



3 Textures used in my model

www.rickyfandesign.blogspot.com/

EXPERIMENT 2

TESTING + EVALUATION

Procedure:

Choose a specific idea from two of the three clients listed above and create an architecture consisting of three spaces. The first two spaces should be at either end of a structure made from 9 interconnected rectangular forms. The third space should be on the landform that articulates a ramp like relationship to the rectangular forms. The spaces at either end of the rectangular forms are the clients laboratories (imagine they actually came up with the idea there). The space on the landform is a place for your clients to meet and exchange ideas. The landform should allow each client to arrive at their meeting in a distinctive and significant way.

BRIEF

BENV2423

TESTING + EVALUATION

BILLY TRAN

HALEY NG

MATHEW HUNTER

EDWARD SARAFIAN

ARCH7202

TESTING + EVALUATION

JULES CROMARTY

EVAN FREEMAN

HARRY LEGASPI

OMA: HOUSE AT BORDEAUX

TESTING + EVALUATION

QUESTIONS?