

ARCH1101 LOWE

ARCH1101 HARKINS

THE STAIR

THE STAIR

TODAY IN STUDIO
STAIRS
STUDENT WORK

TODAY IN STUDIO

Note: Throughout the class students will be demonstrating modeling techniques using Google Sketchup.

- 1.** Using the scheme you developed in SketchUp (and inspired by the stairs shown in the lecture) design two sets of stairs; one that goes from the above ground studio down to the exhibition space and a second that comes from the below ground studio up to the exhibition space.
- 2.** Represent each stair with at least 2 sections. Keep all the notes, details and sections relating to each stair on one pair of facing pages. Or on two screens if you are using an iPhone, iPad or similar device.
- 3.** In consultation with your tutor take another one of the sections created in the first studio session and design two sets of stairs for that scheme. Represent each of these new stairs with at least 2 sections.

By the end of the studio session you will have at least 8 sections (representing 4 sets of stairs).



ANDREW BARRY



RACHAEL WHITEREAD

LIGHT STAIRS















CENTRE POMPIDOU, PARIS



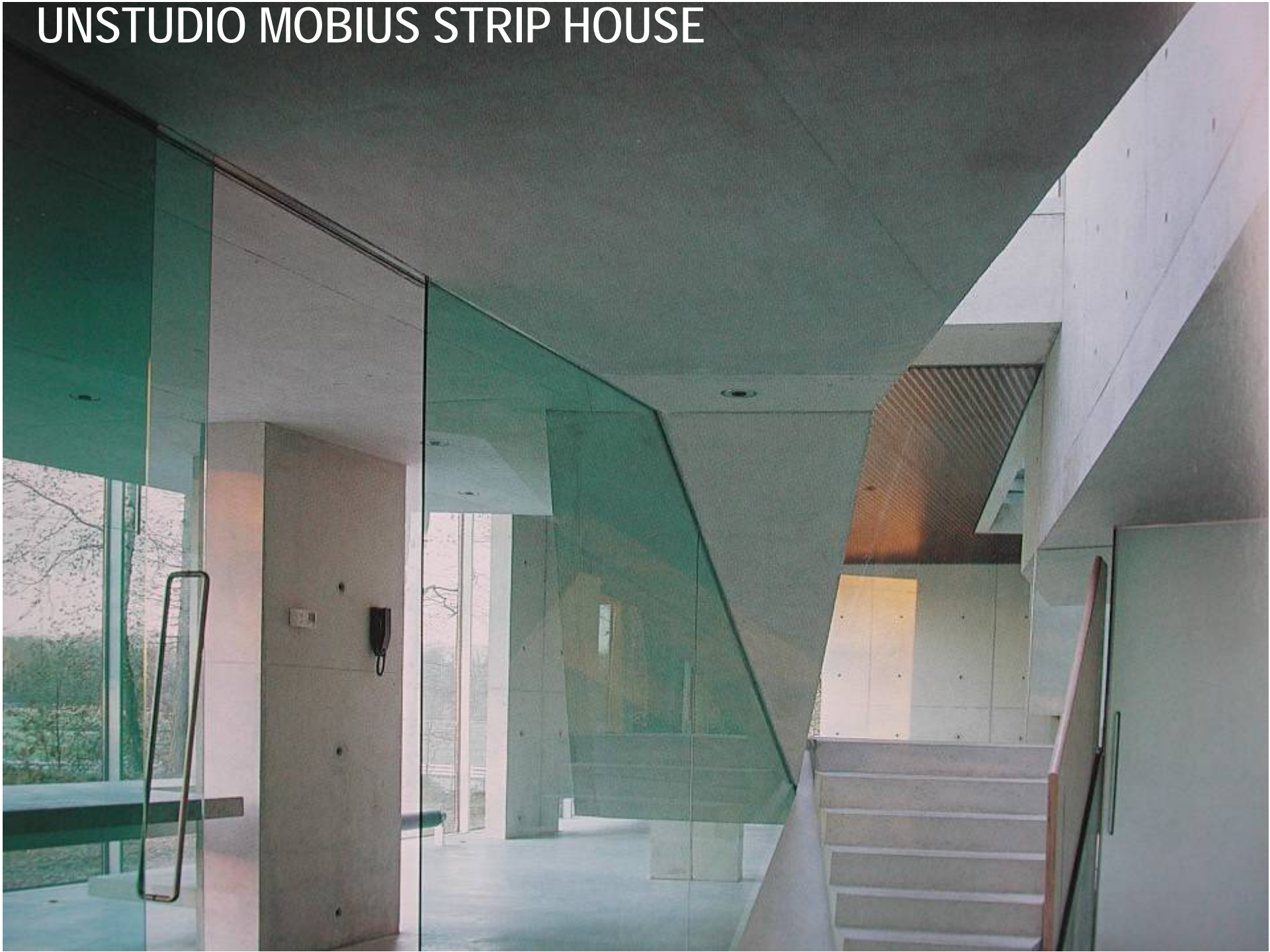
VILLA VPRO, MVRDV

HEAVY STAIRS





UNSTUDIO MOBIUS STRIP HOUSE







LUIS BARRAGAN









PHILLIPPE STARK

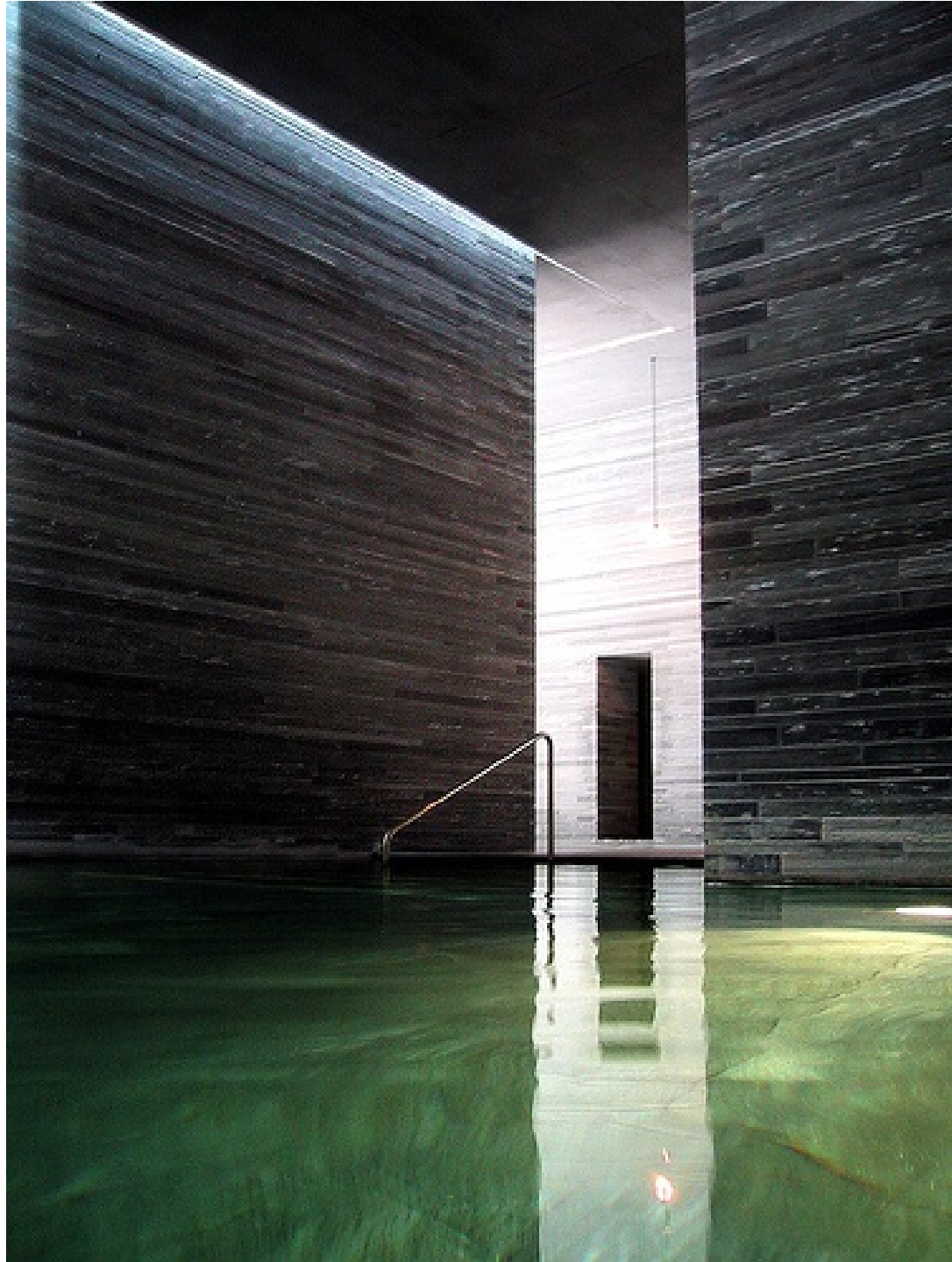


CARLO SCARPA



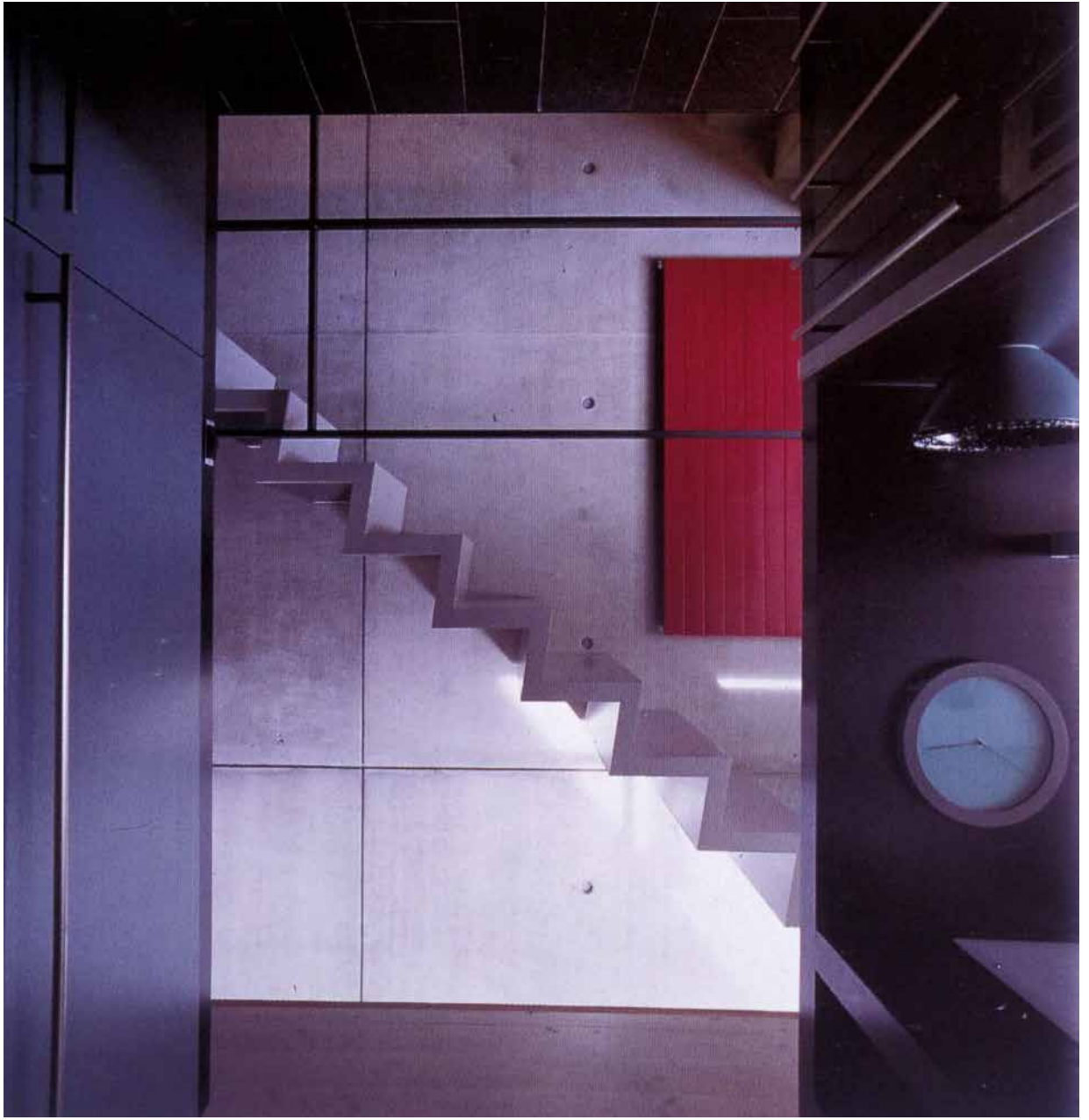


PETER ZUMTHOR
THERMAL BATHS, VALS



CANTILEVERED STAIRS





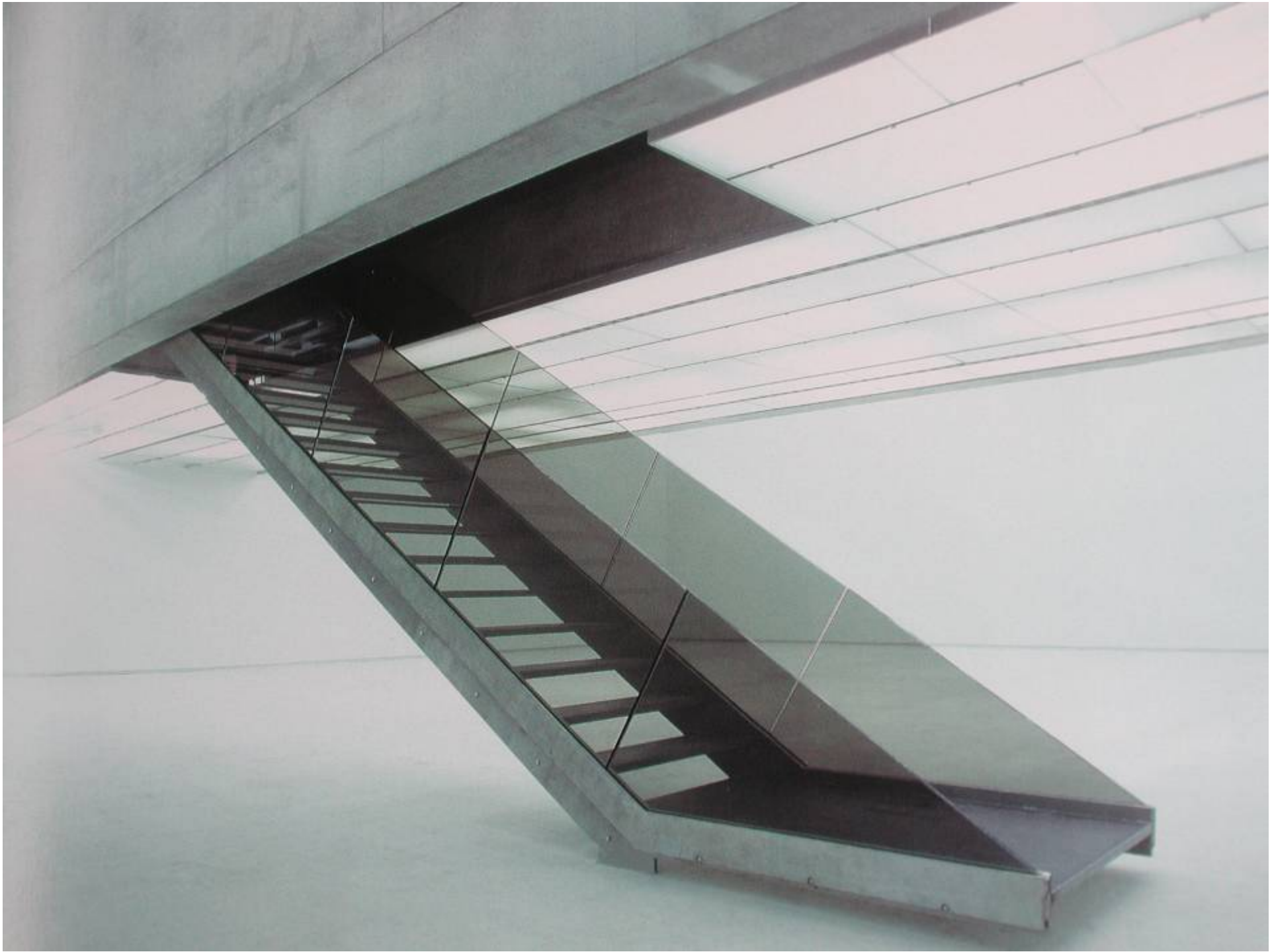
















LE CORBUSIER. CHANDIGARH

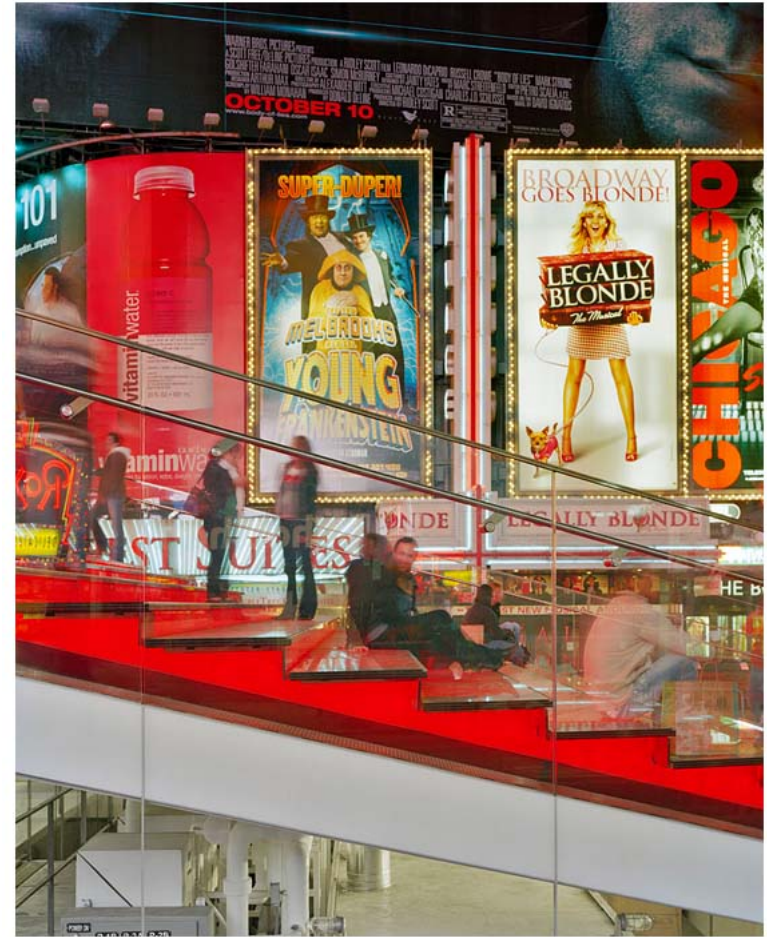
OUTSIDE STAIRS



PERKINS EASTMAN. NYC



TROY DONOVAN





DETAILS

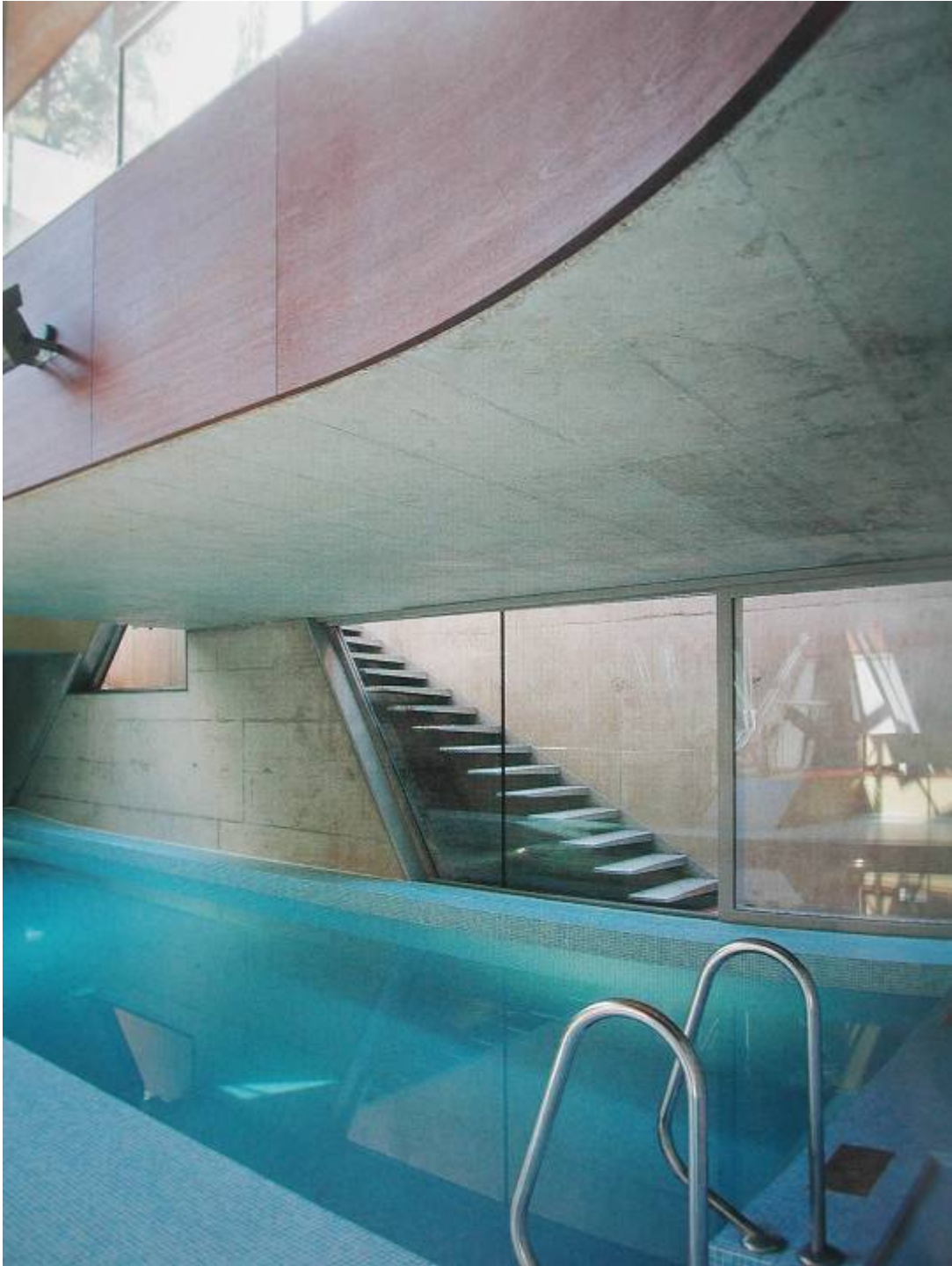




LAKE COMO. ITALY











CATHEDRAL. MILAN. ITALY

COLOSSEUM. ROME









HOUSE ON MYKONOS. MARC CORBIAU













GANGES RIVER. INDIA











ROMAN RUINS. BATH. ENGLAND



CARLO SCARPA







OPERA HOUSE. SYDNEY





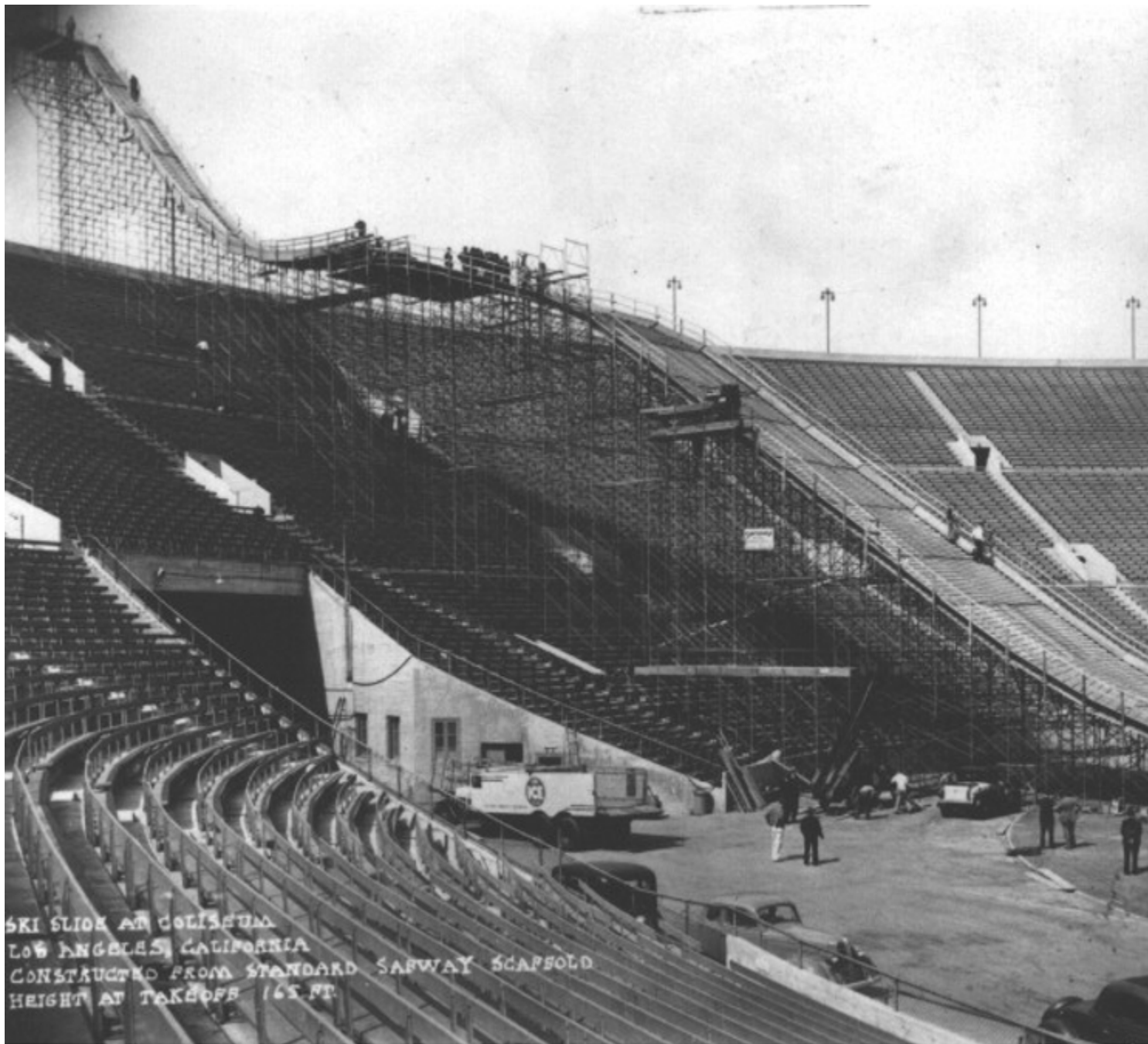












SKI SLIDE AT COLISEUM
LOS ANGELES, CALIFORNIA
CONSTRUCTED FROM STANDARD SAWWAY SCAFFOLD
HEIGHT AT TAKEOFF 165 FT.



SPIRAL STAIRS

**CASA ROTA
MANUEL OCANA
ARQUITECTOS**









HERZOG AND DE MEURON



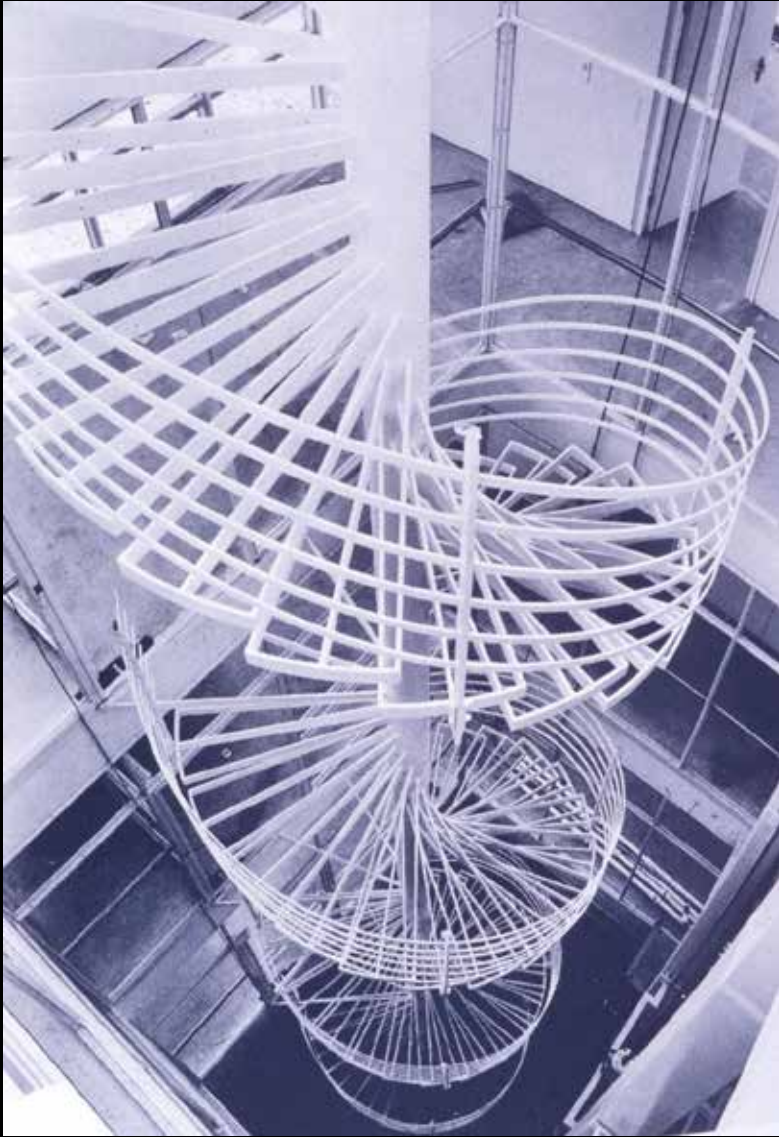
STEVEN HOLL



TATE MODERN
LONDON







**HOUSE AT BORDEAUX.
REM KOOLHAAS**

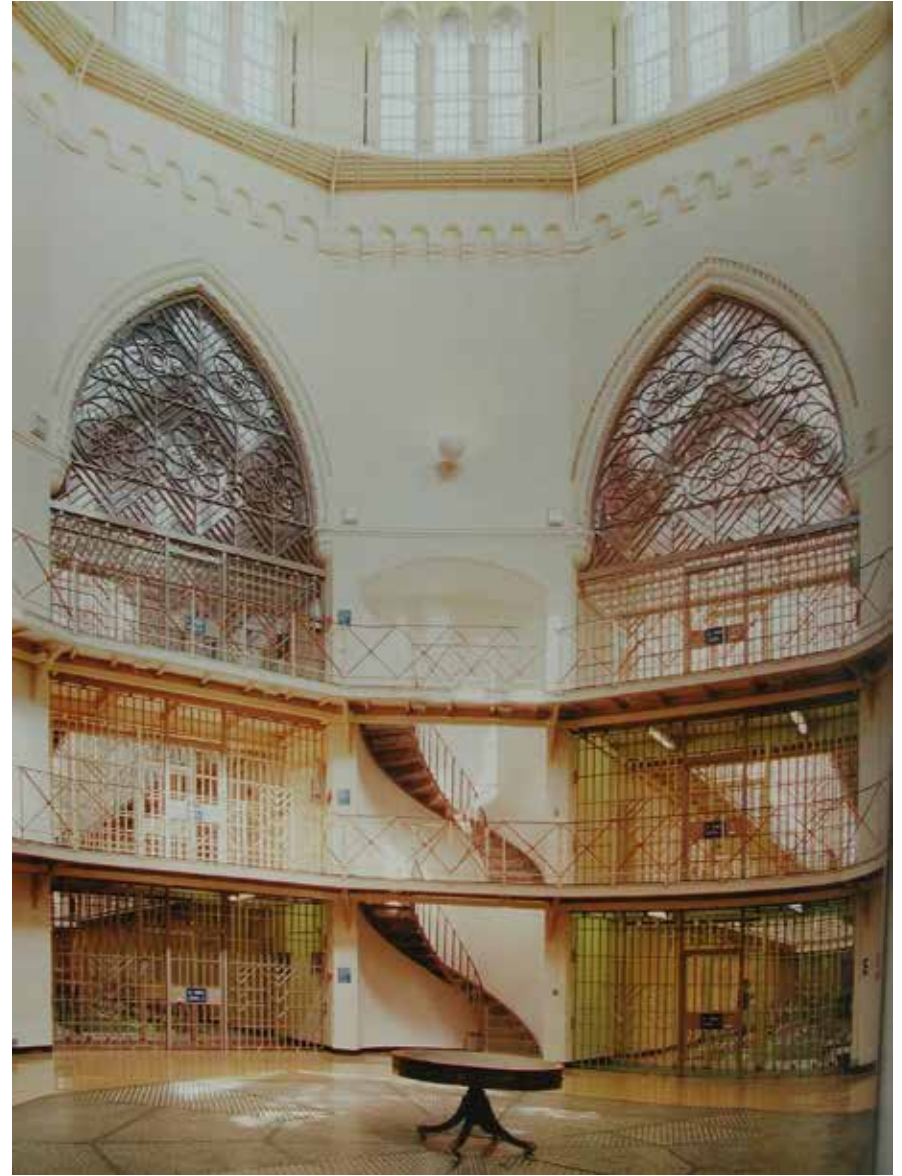
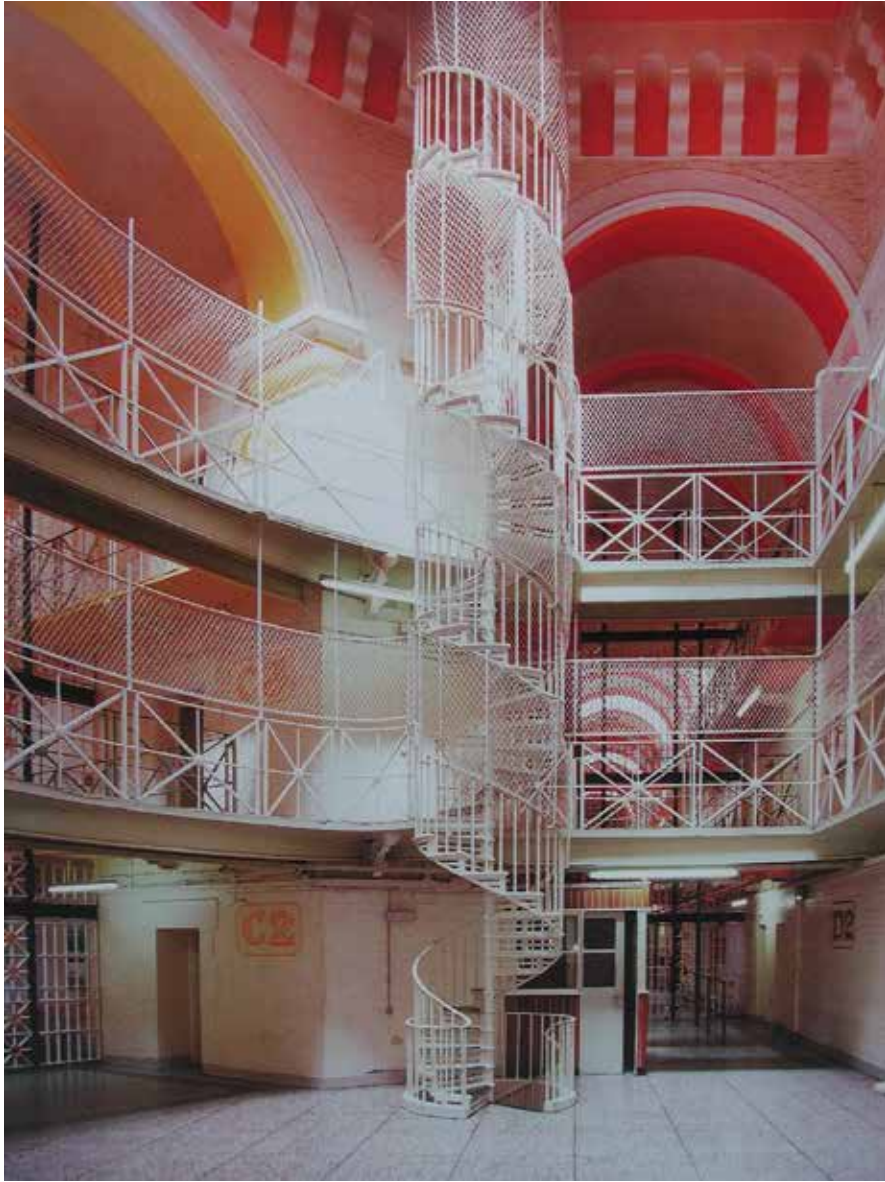




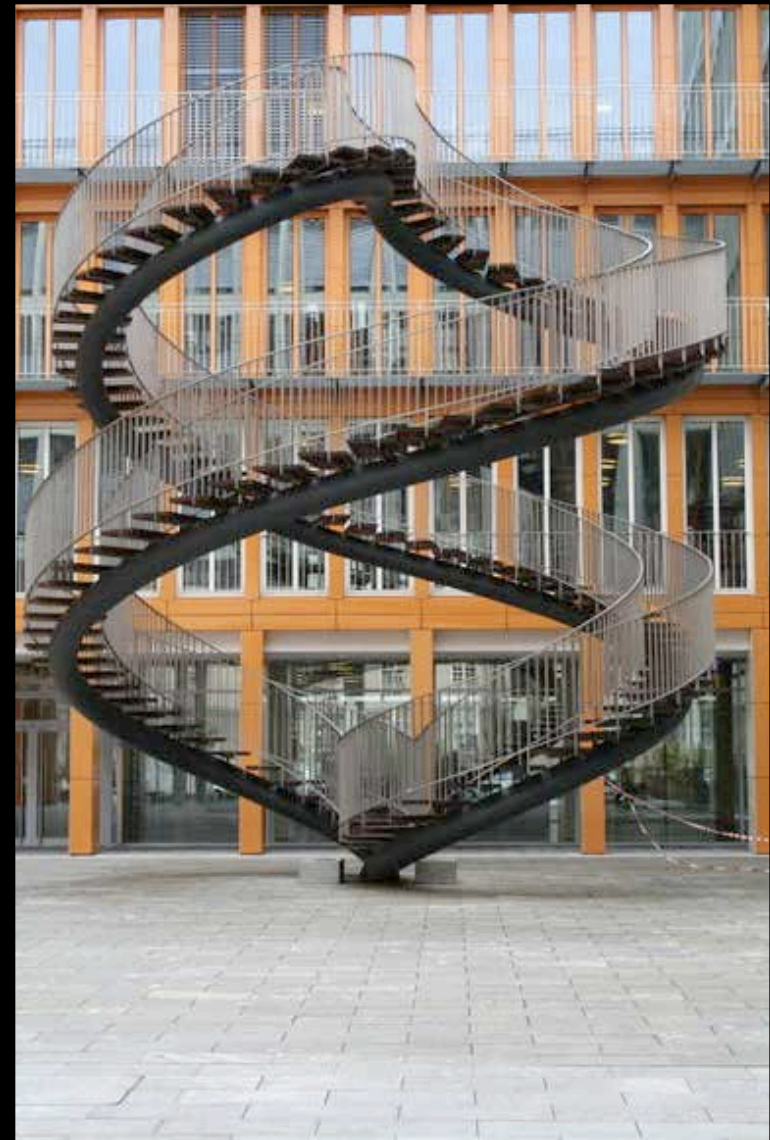
TETSUYA NAKAZONO



TETSUYA NAKAZONO







OLAFUR ELIASSON. MUNICH



ROSS LOVEGROVE. DNA STAIRCASE.

SHOP STAIRS



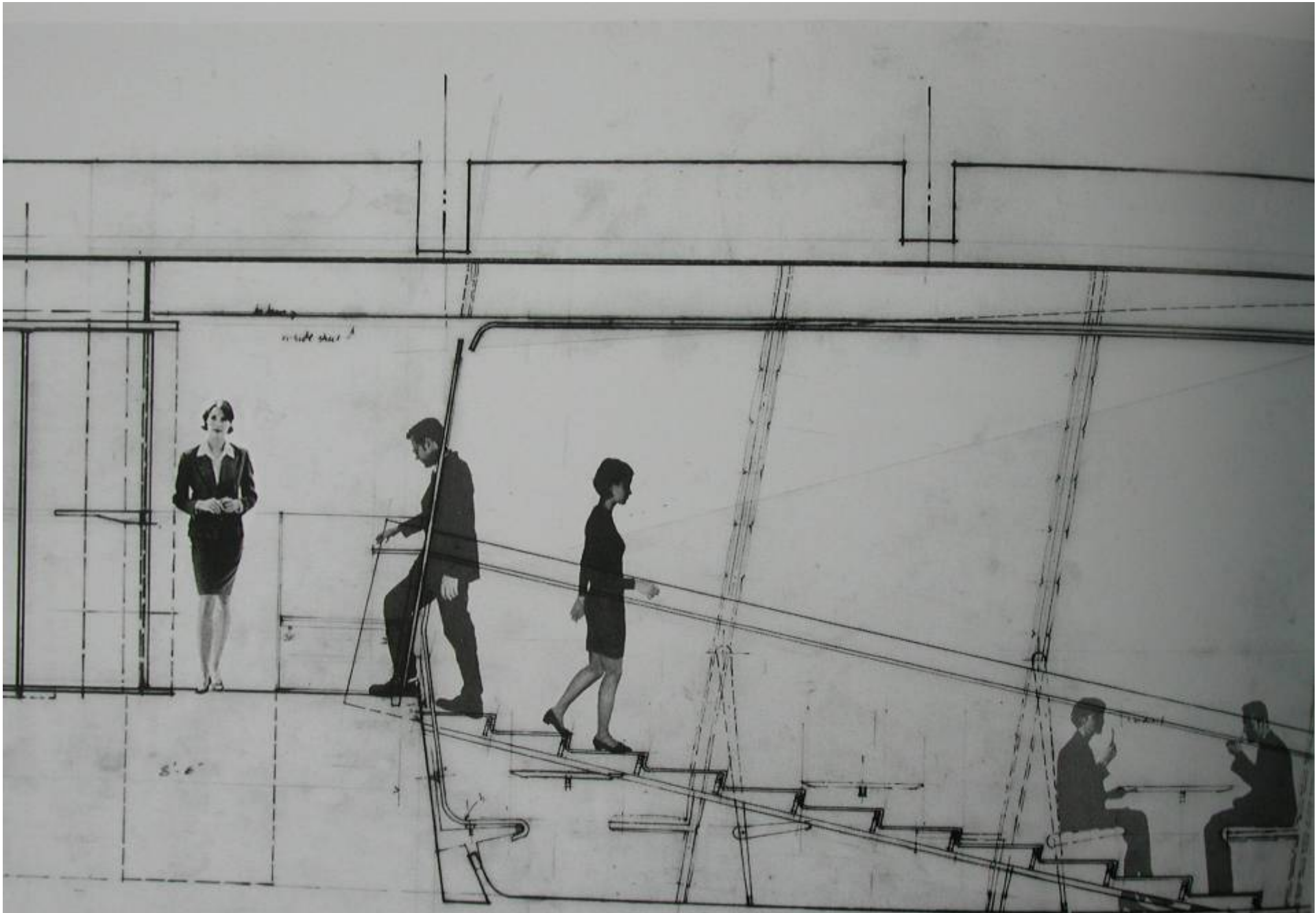
REM KOOLHAAS. OMA. PRADA. NYC











DILLER + SCOFIDIO

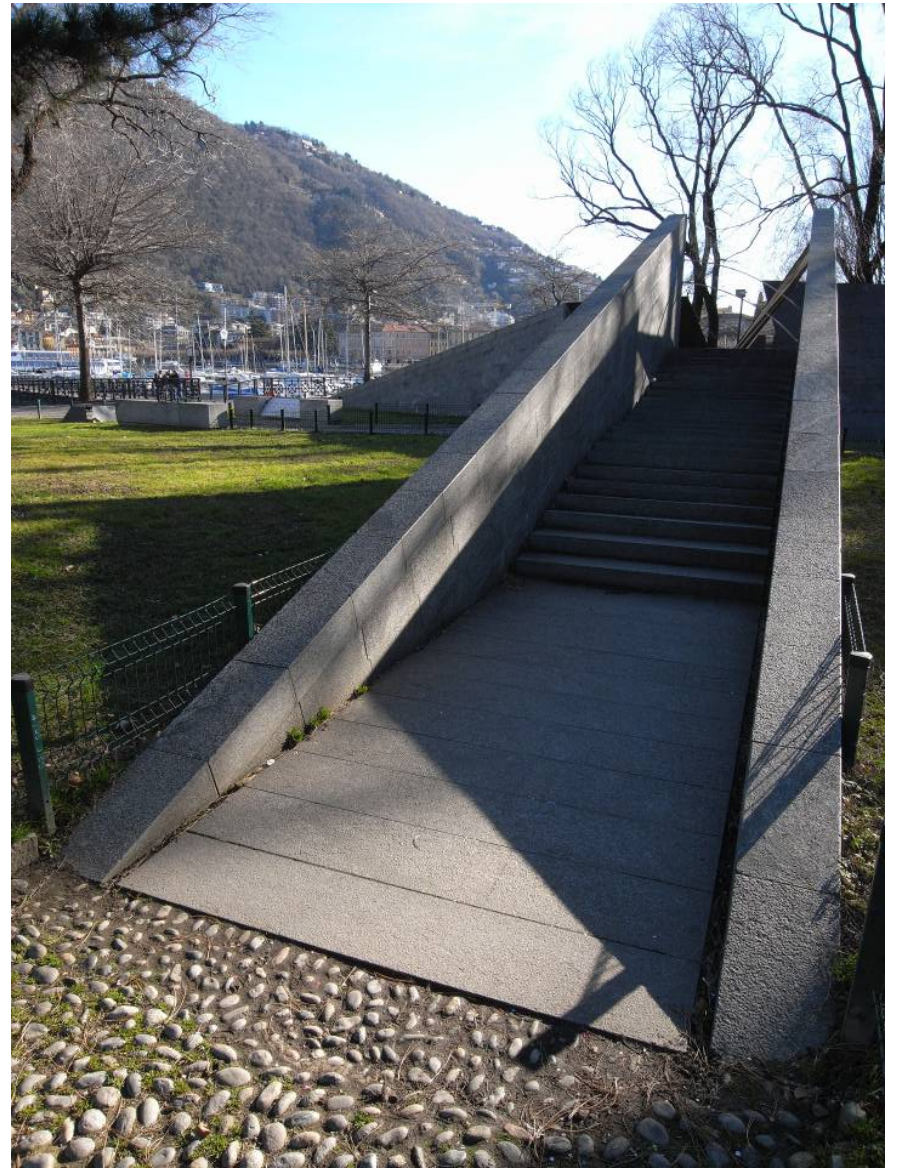


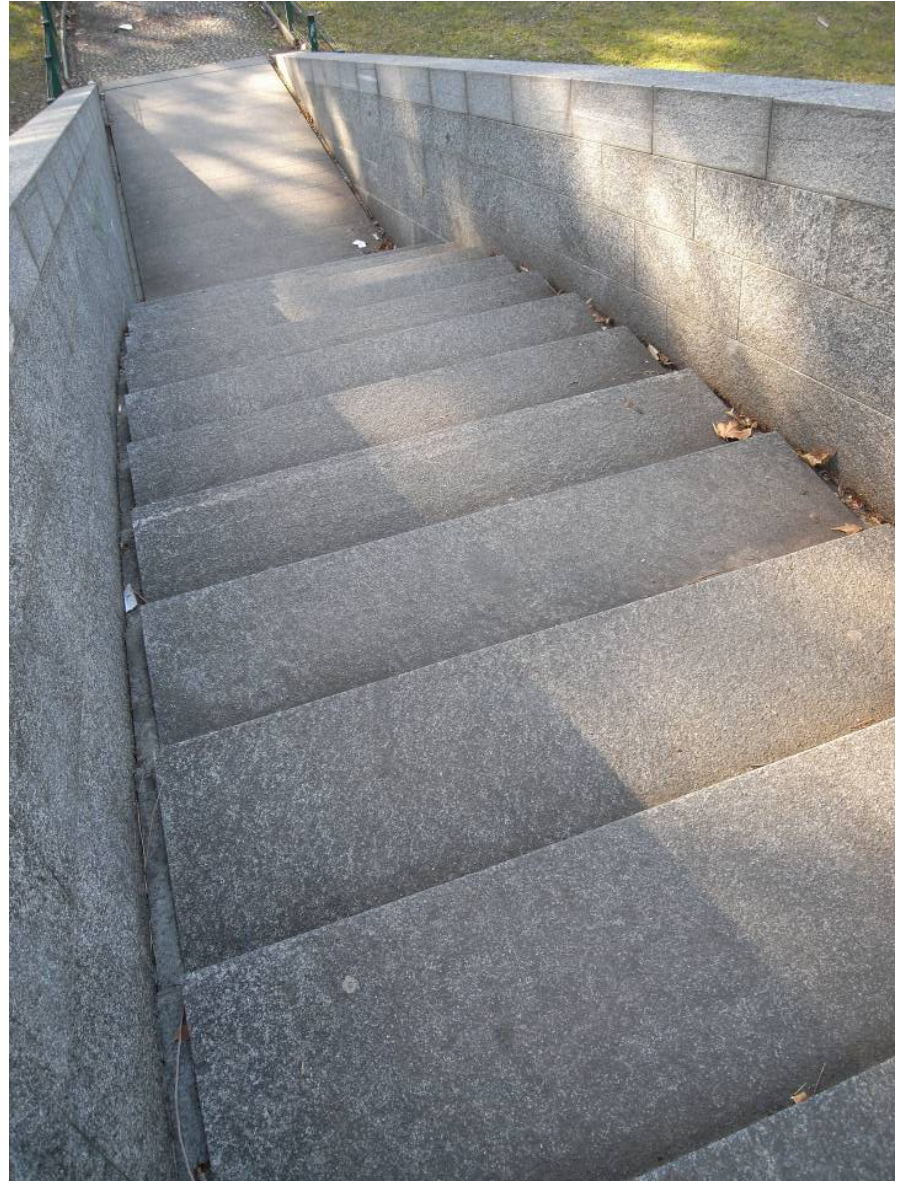


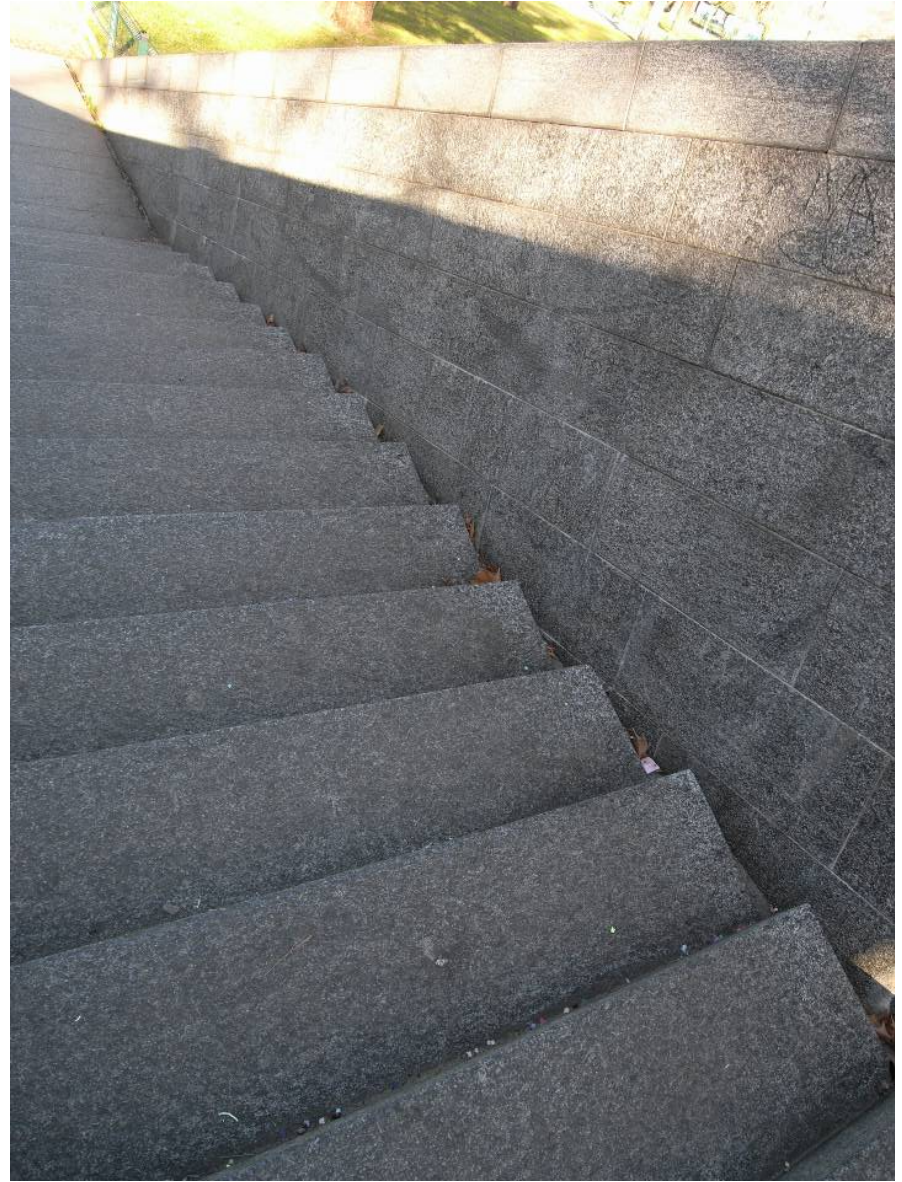
MONUMENTAL STAIRS



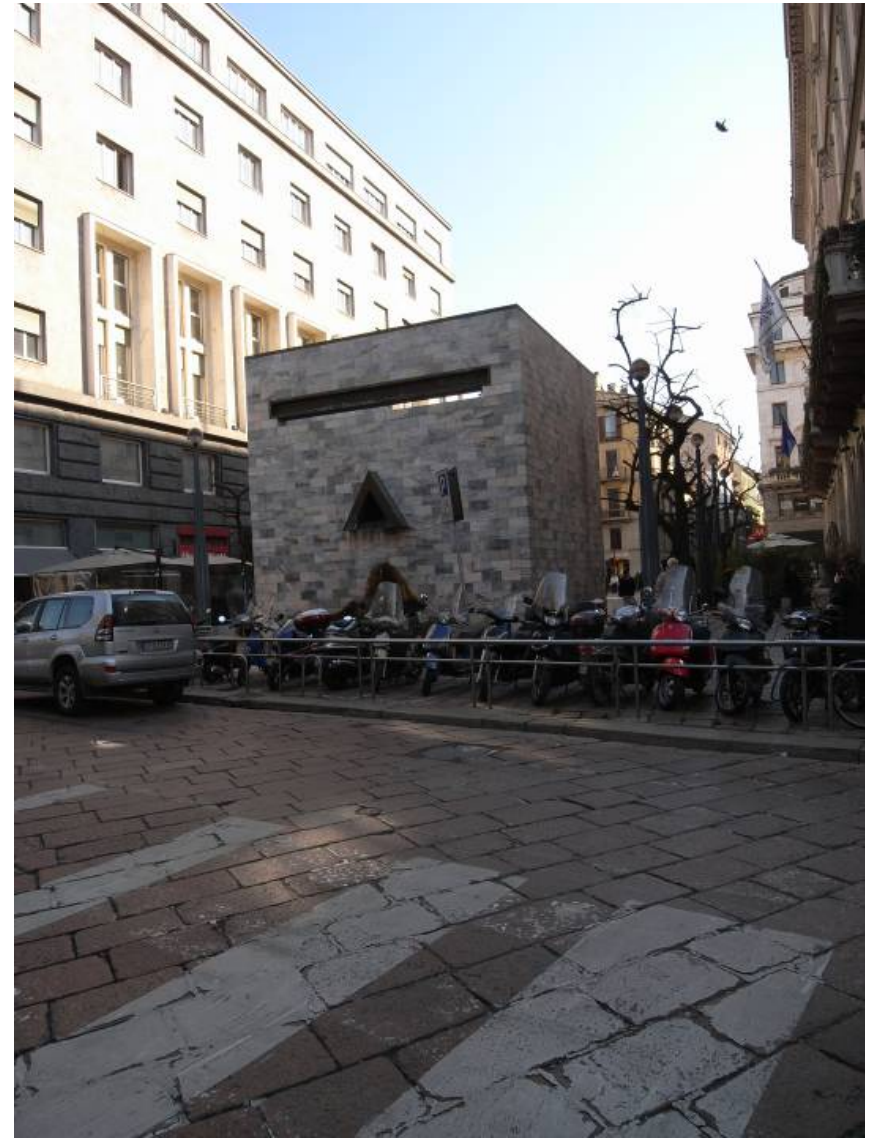
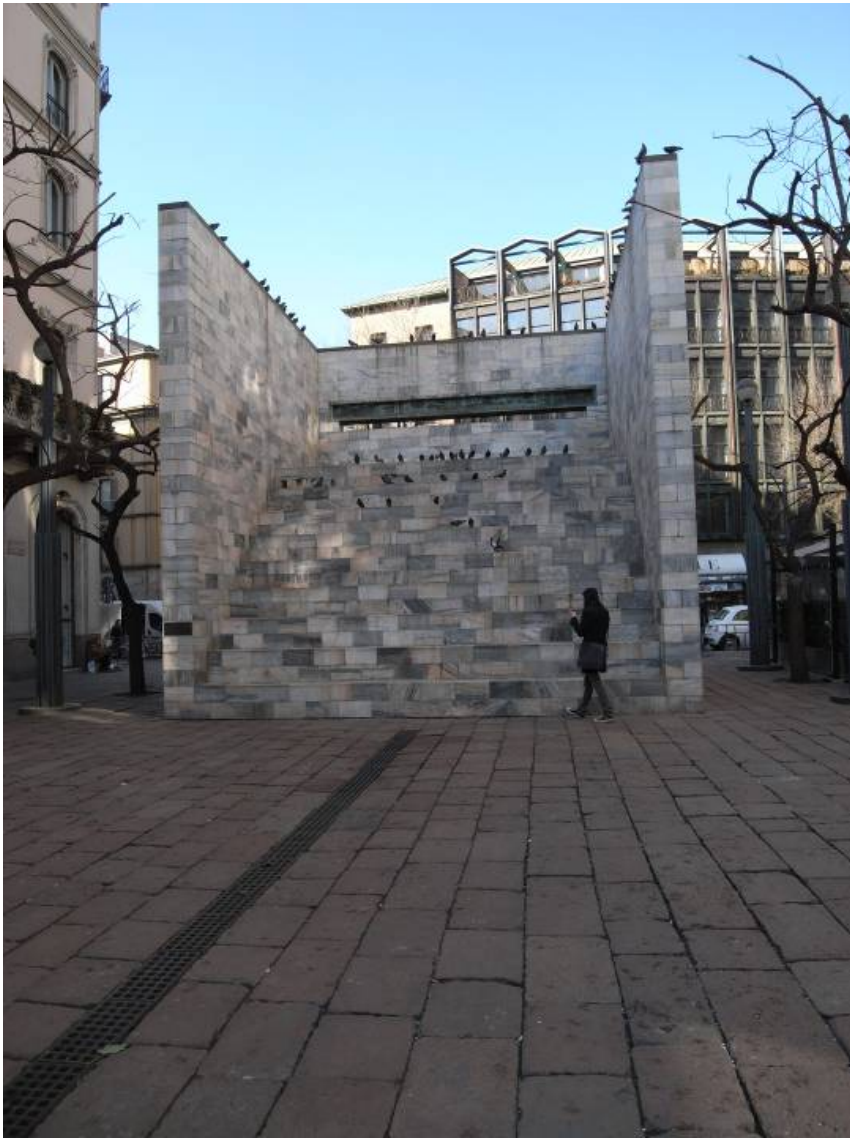
LAKE COMO. ITALY



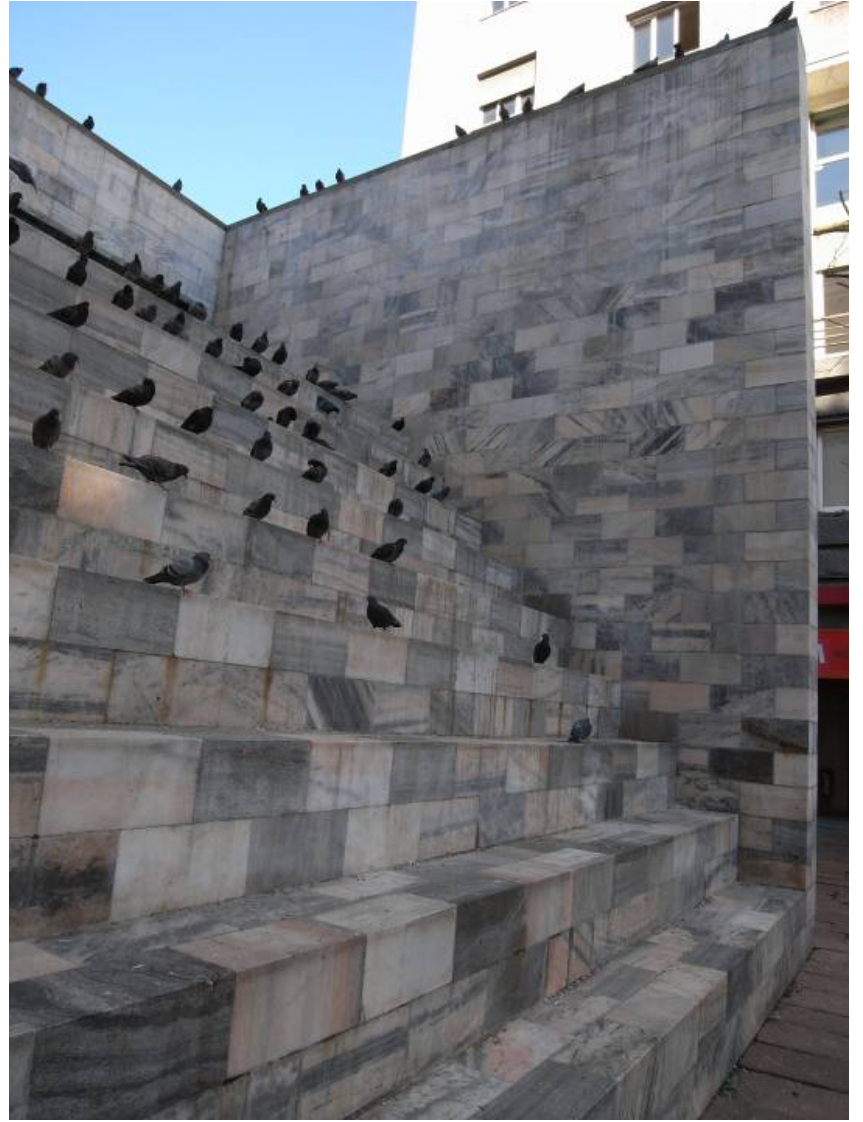
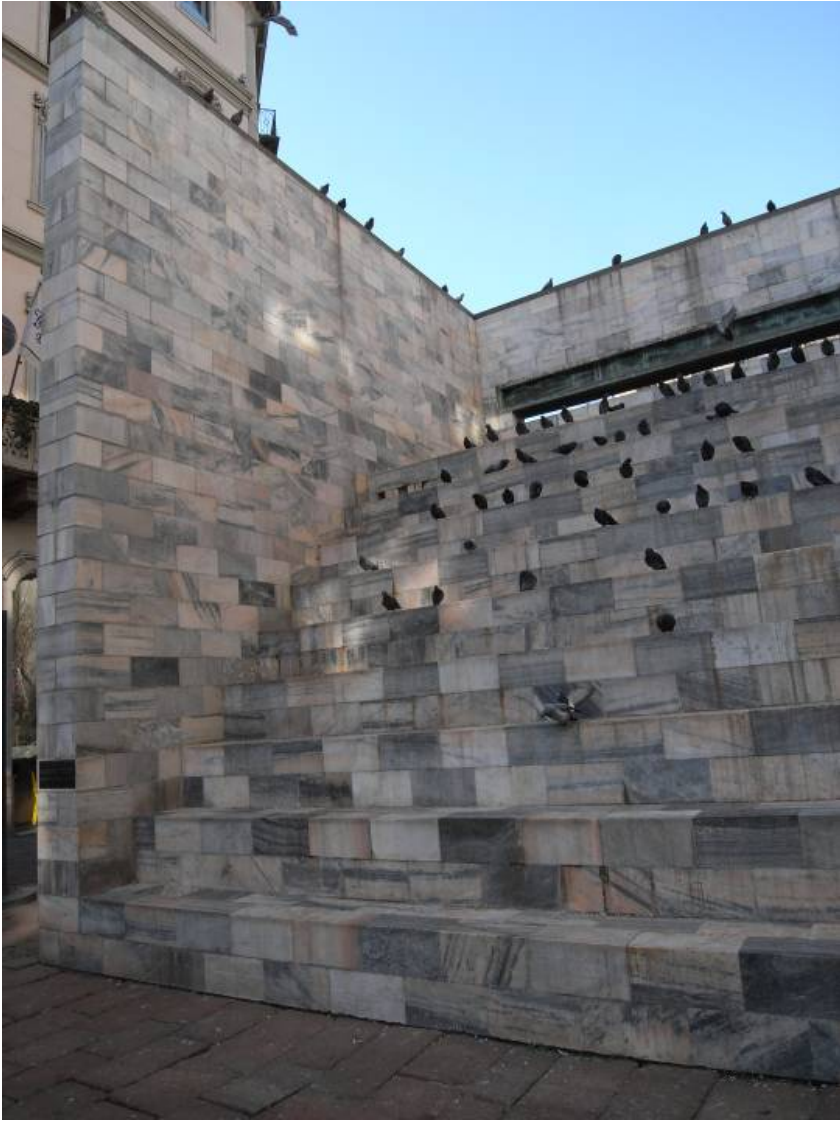






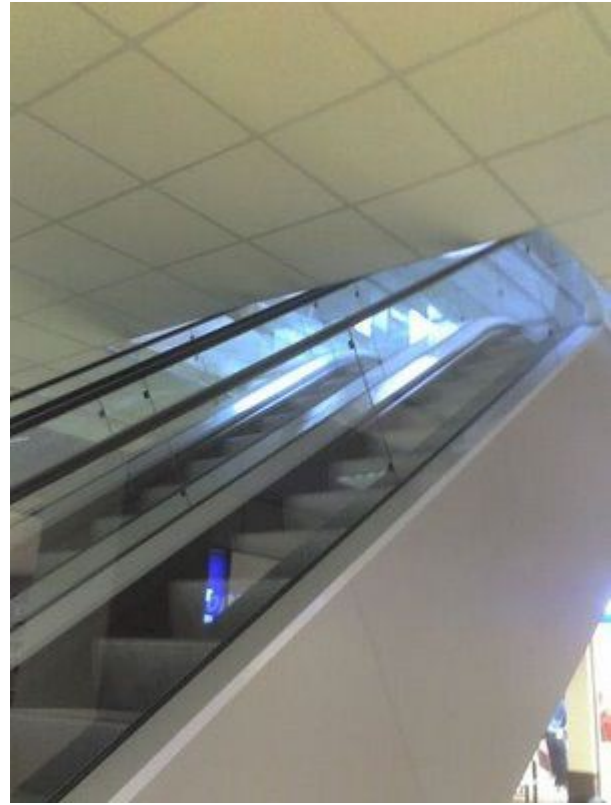


ALDO ROSSI. MILAN





FAILURE





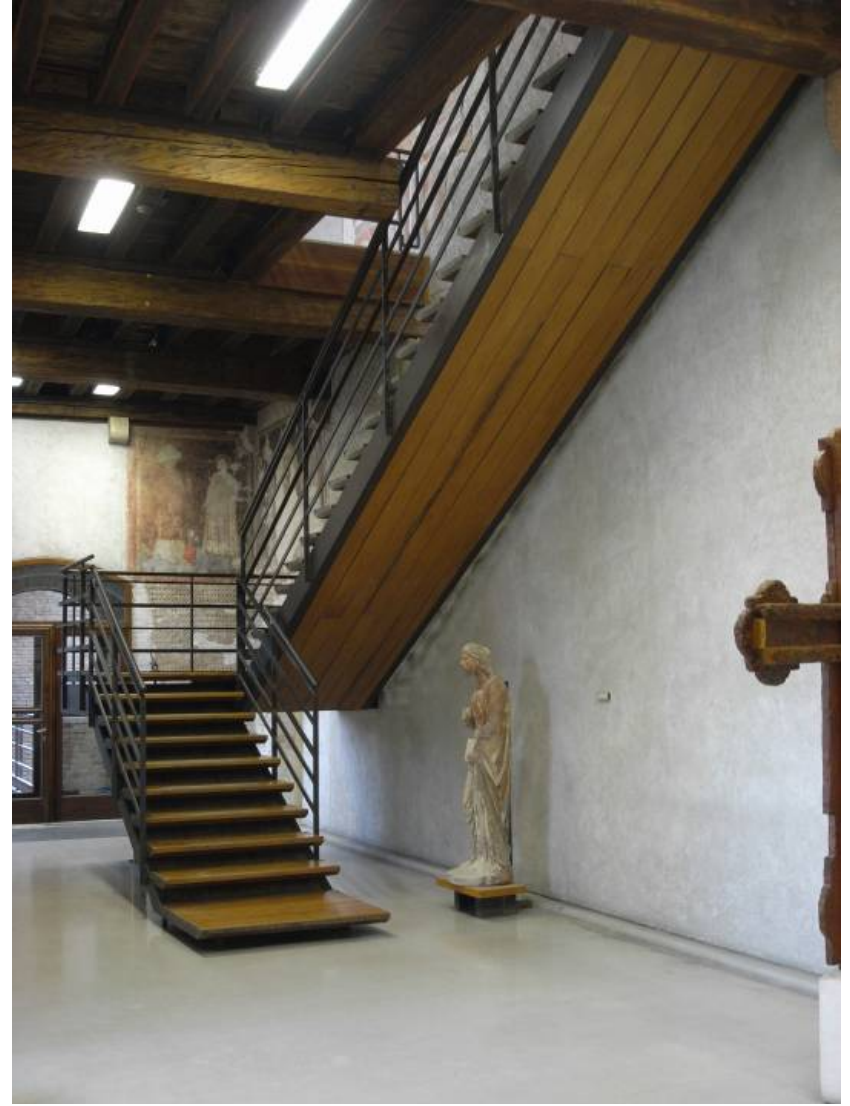
CASTLEVECCHIO

CASE STUDY

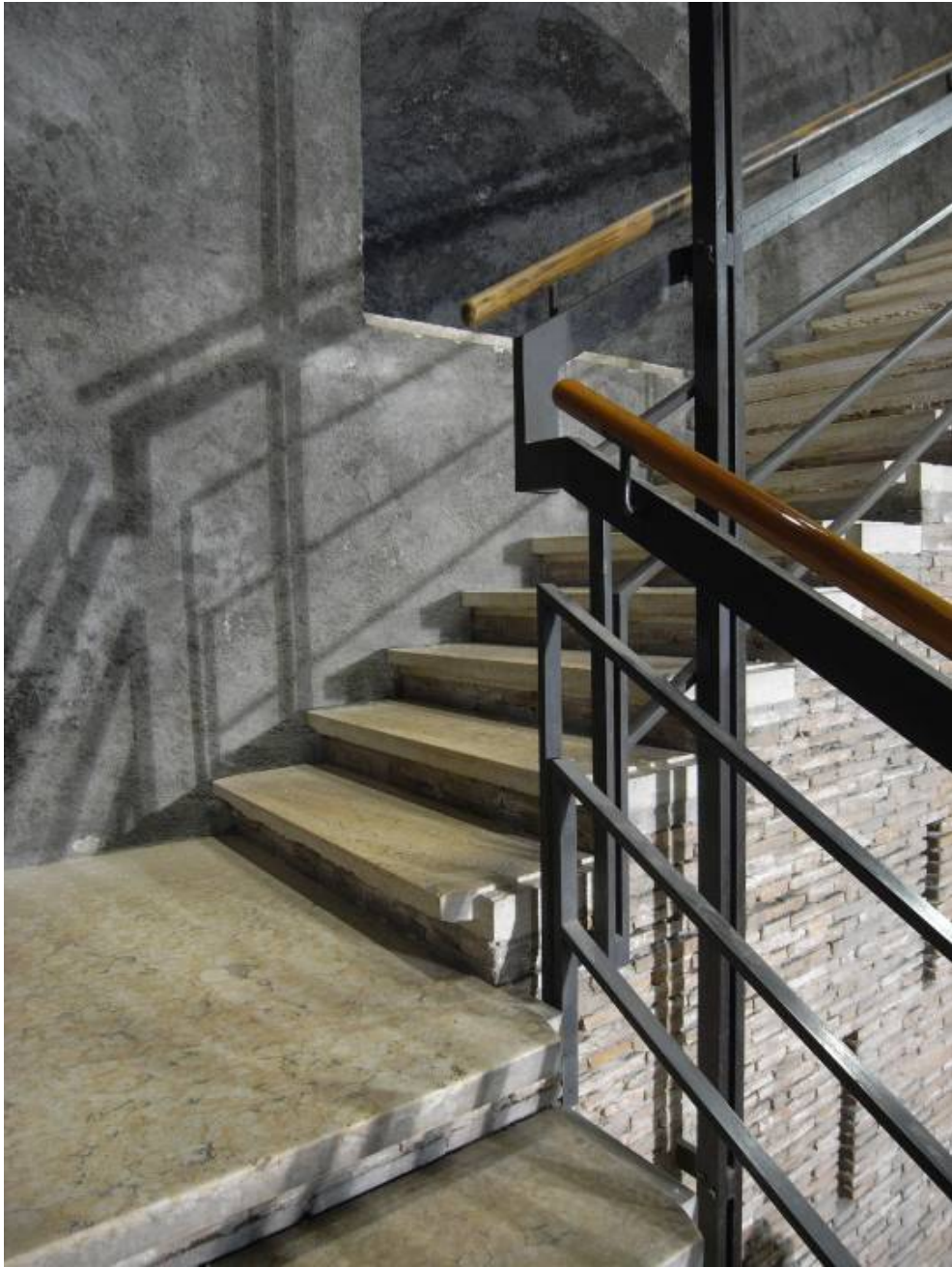
CARLO SCARPA



























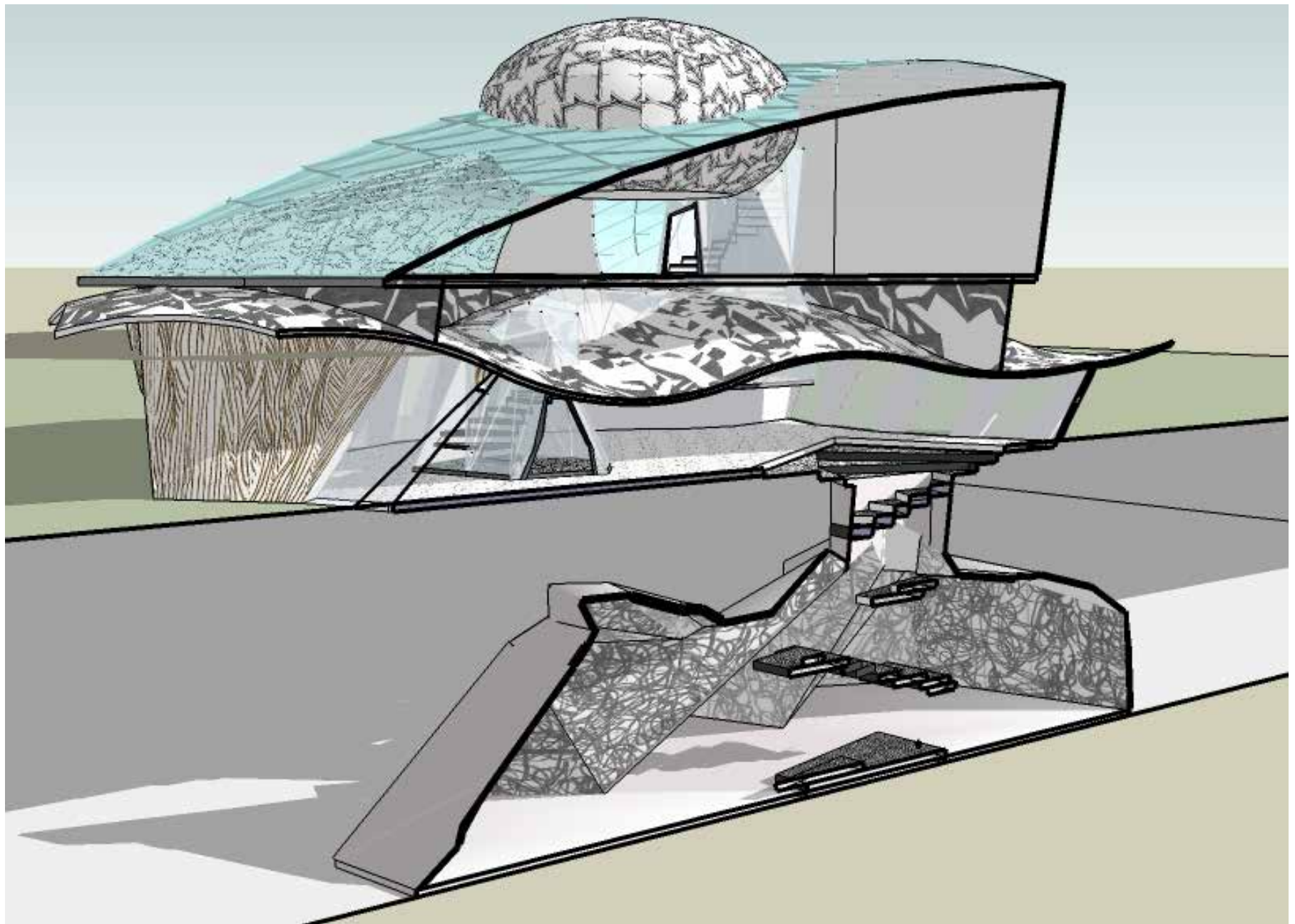


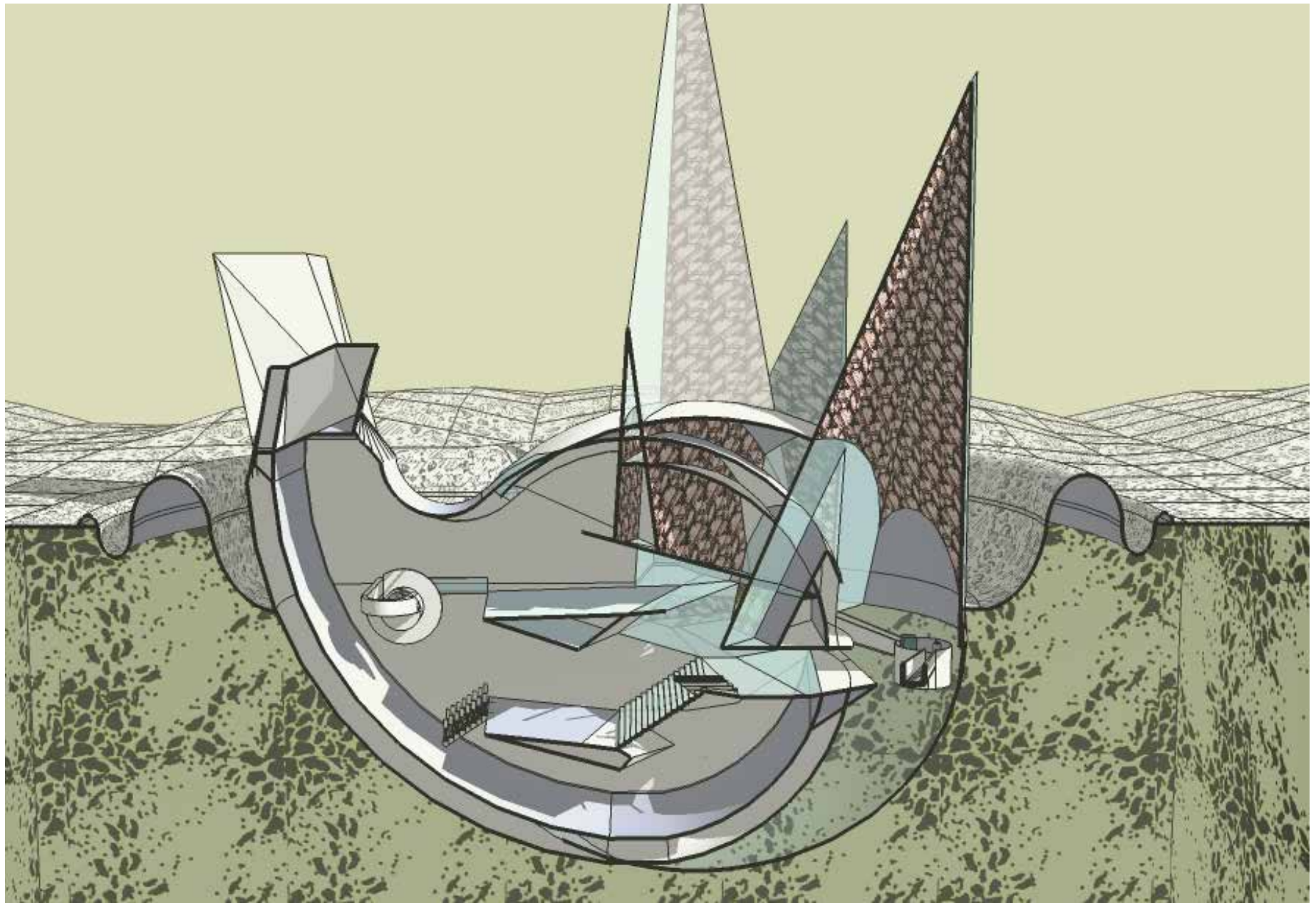


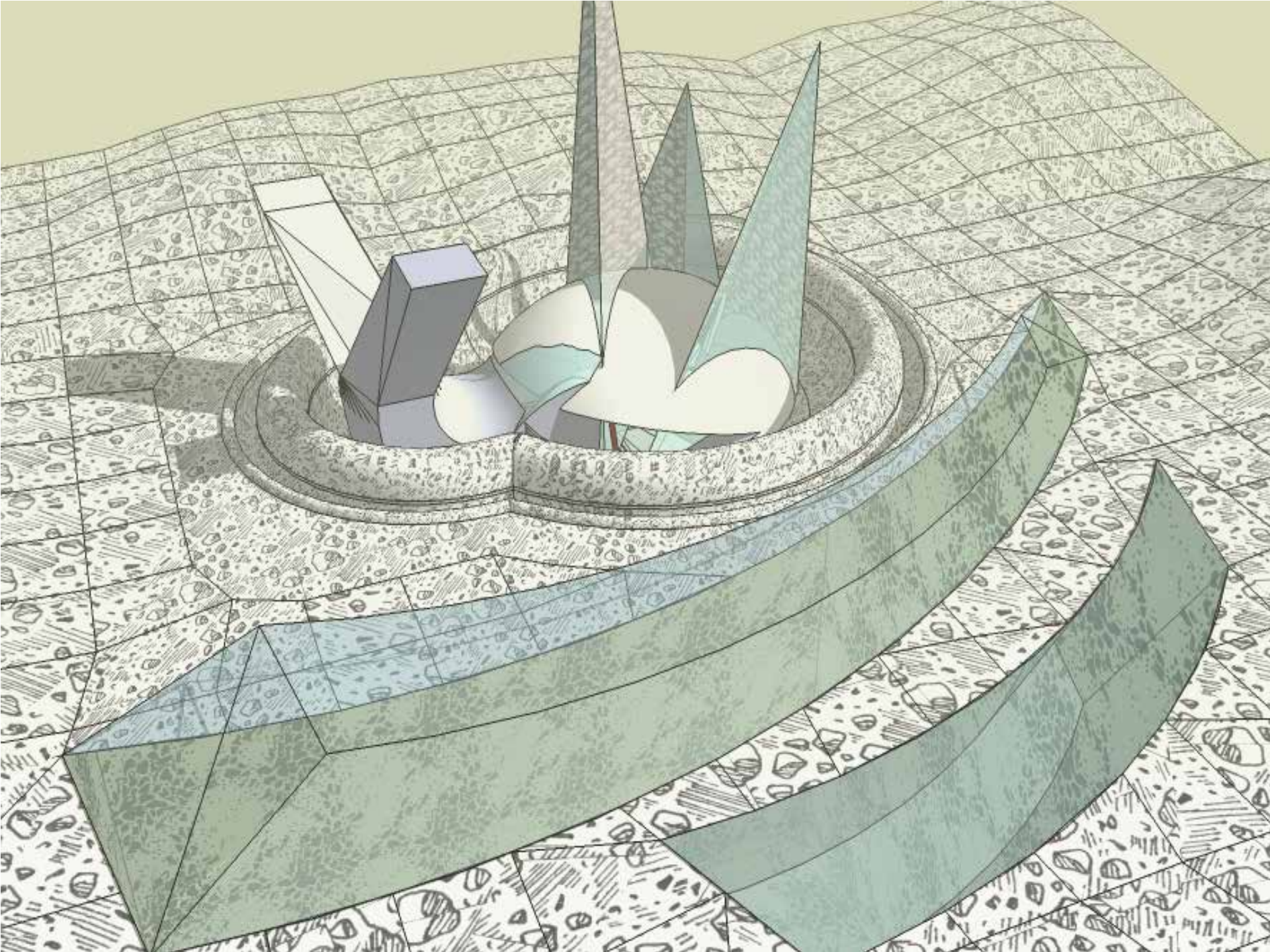


ARCHITECTURE DESIGN STUDIO ARCH1101

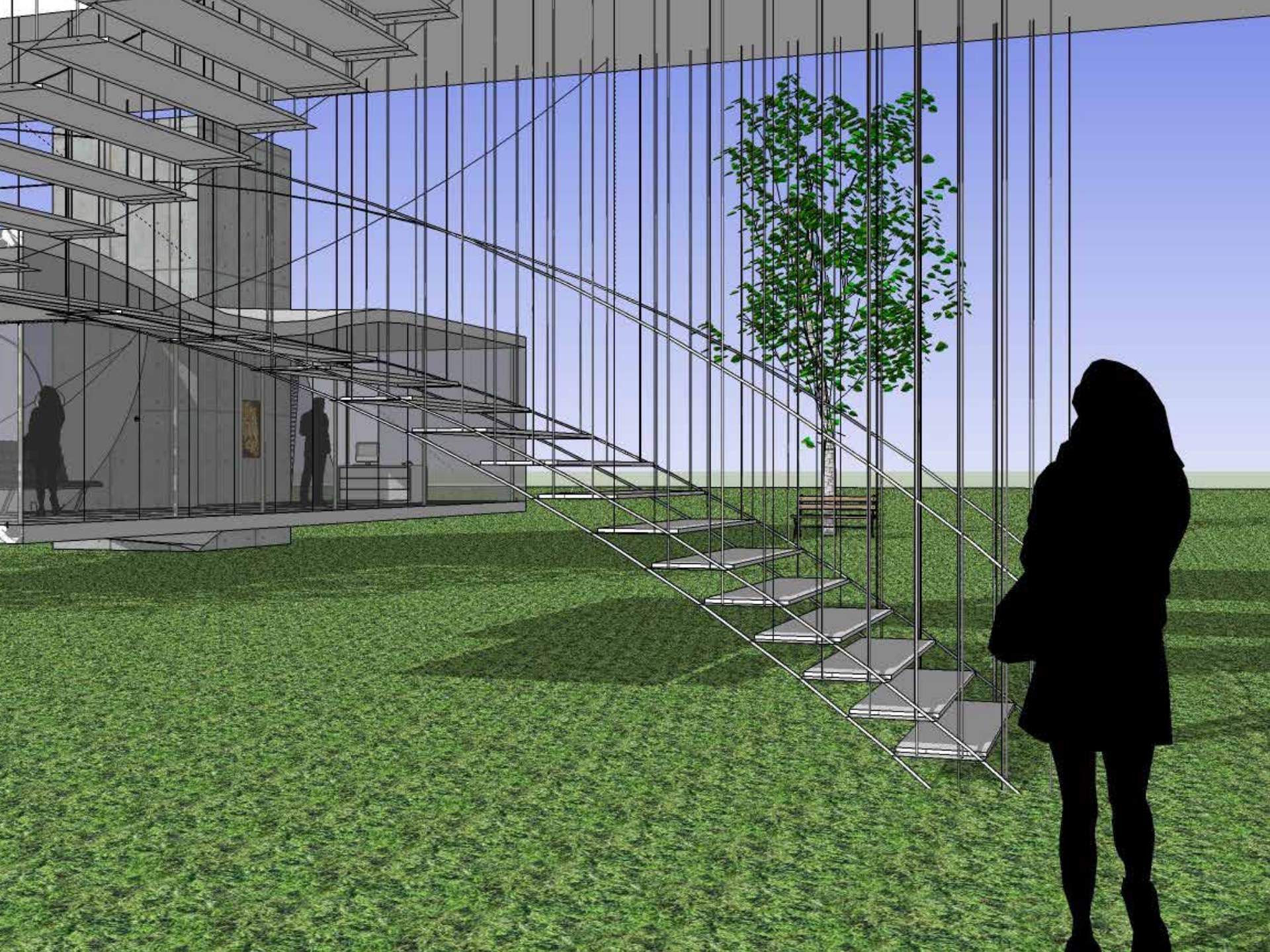
STUDENT WORK

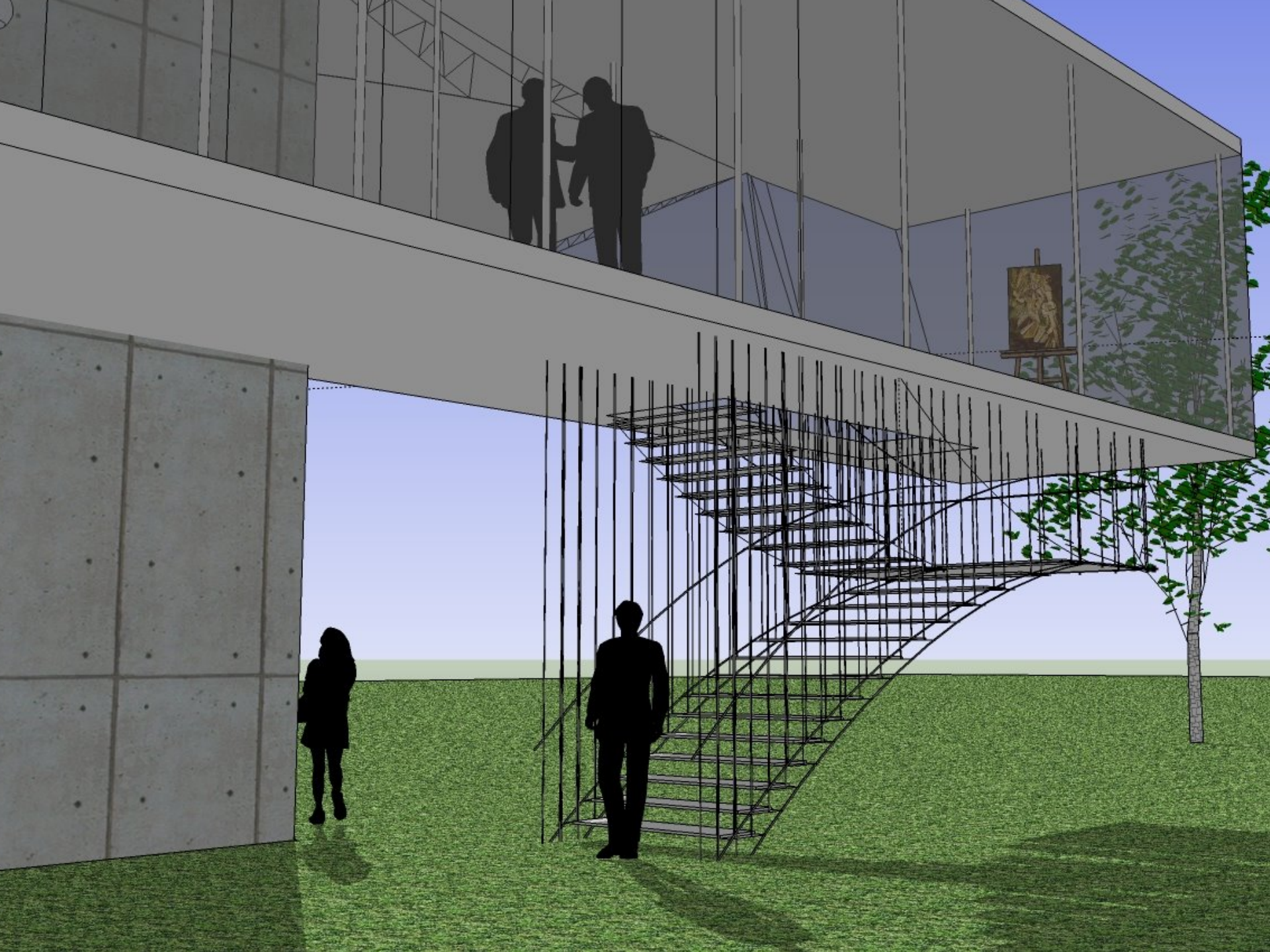


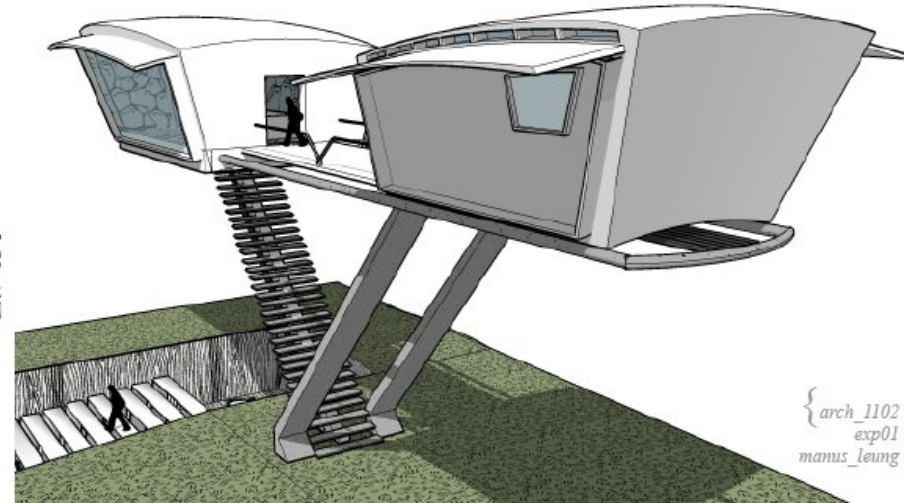
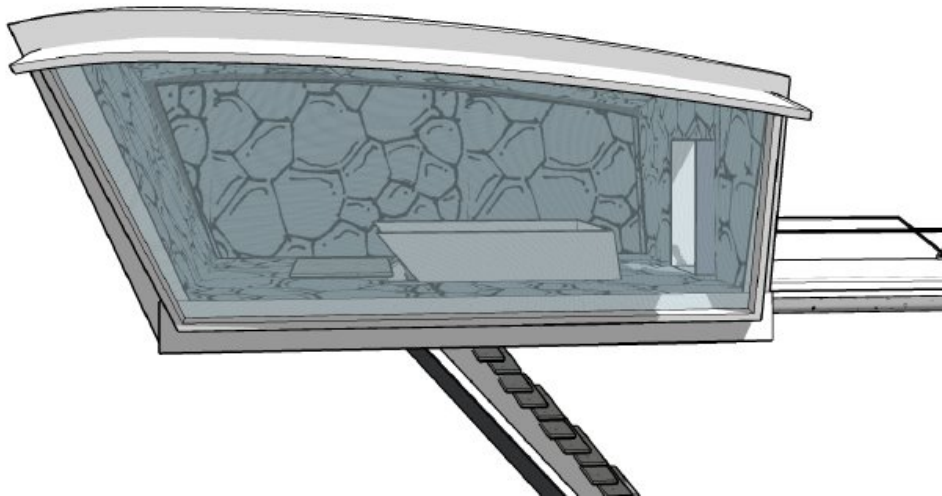
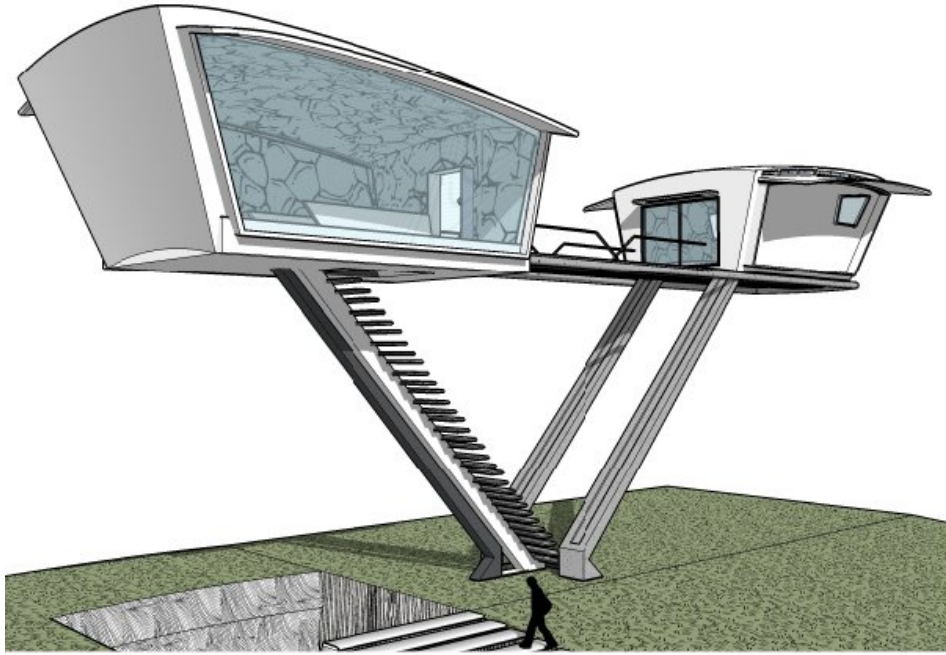


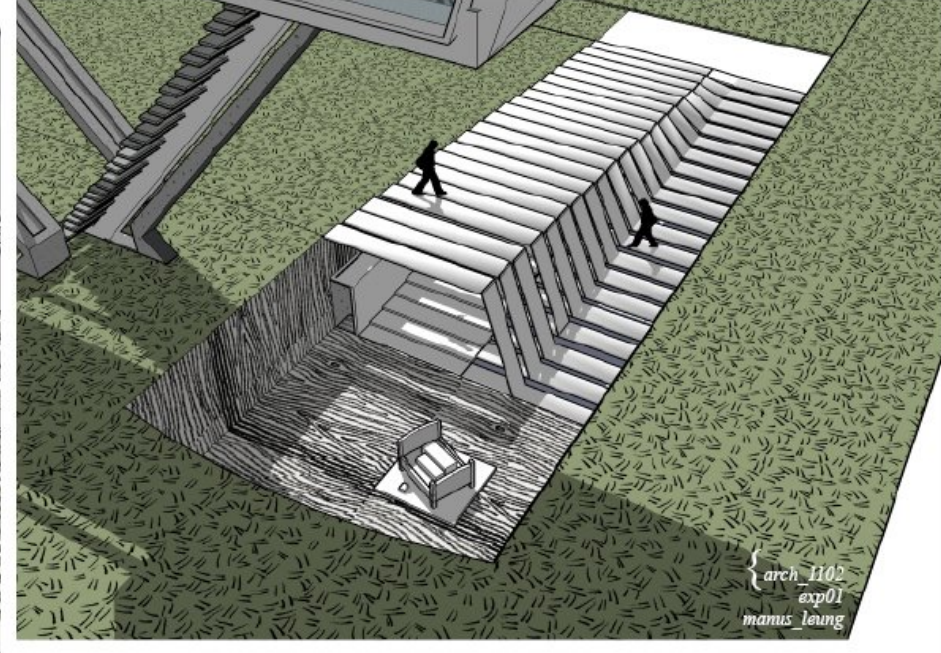
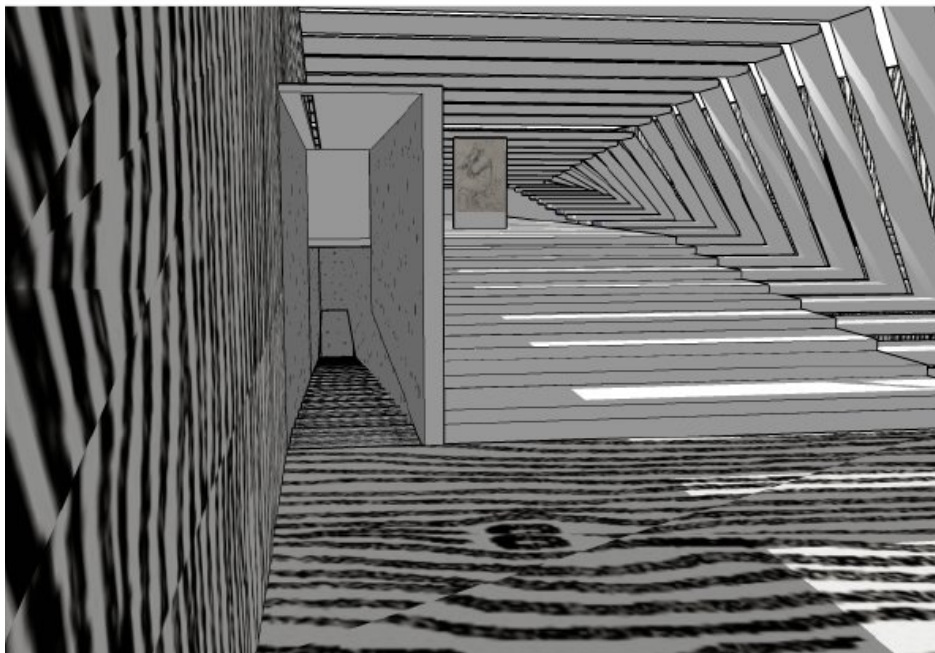
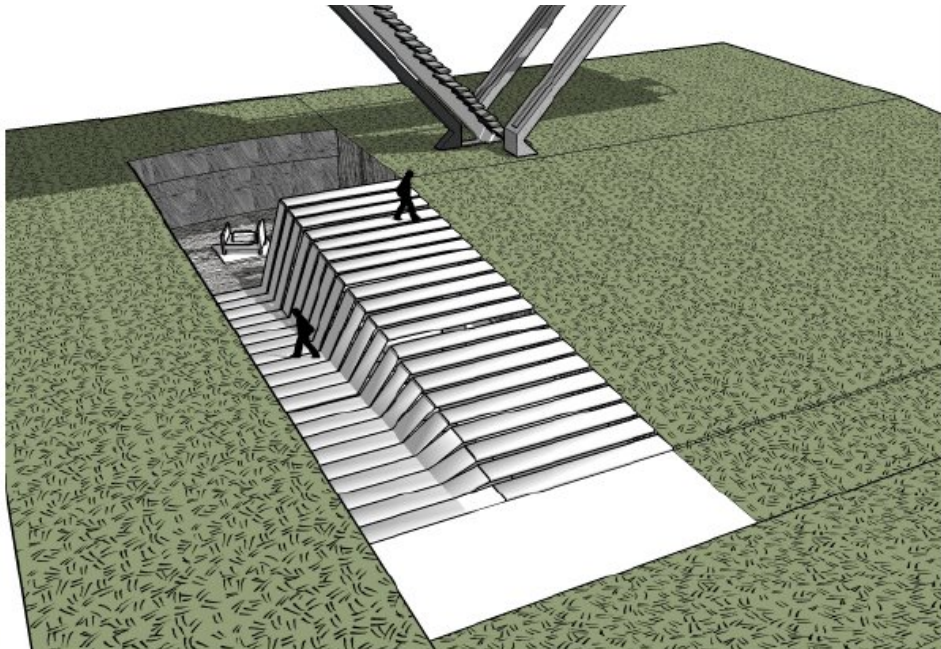
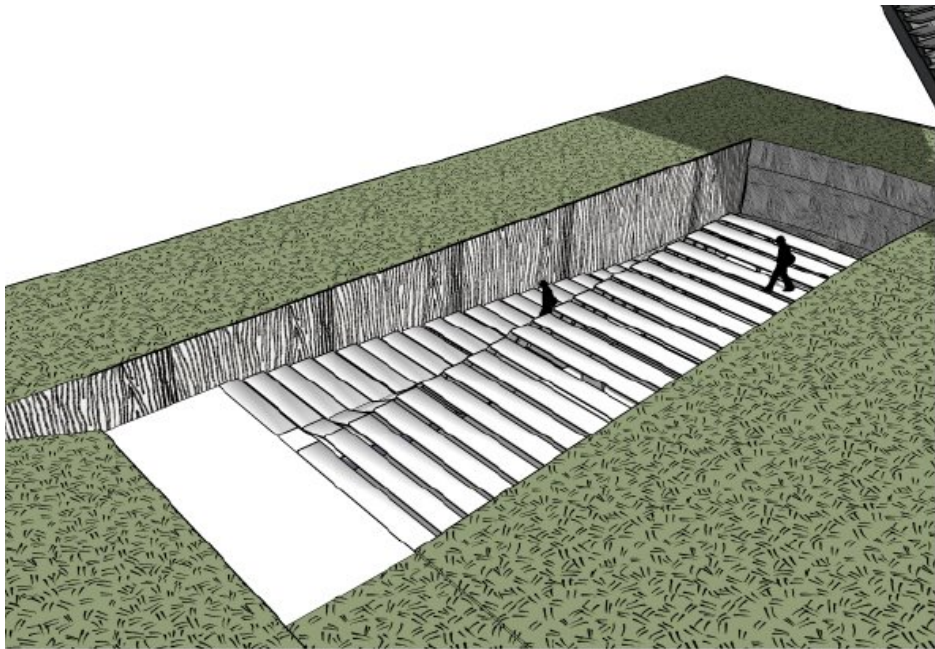




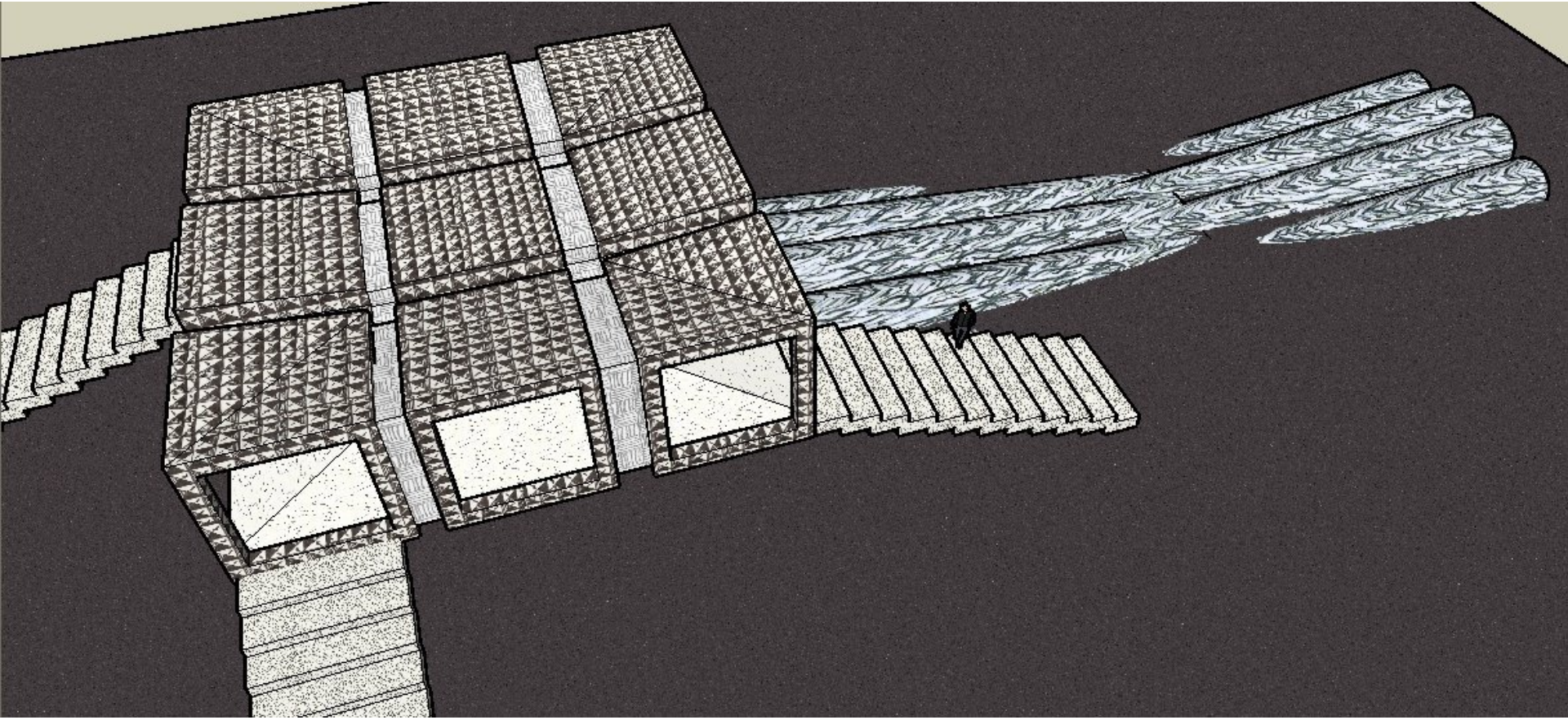


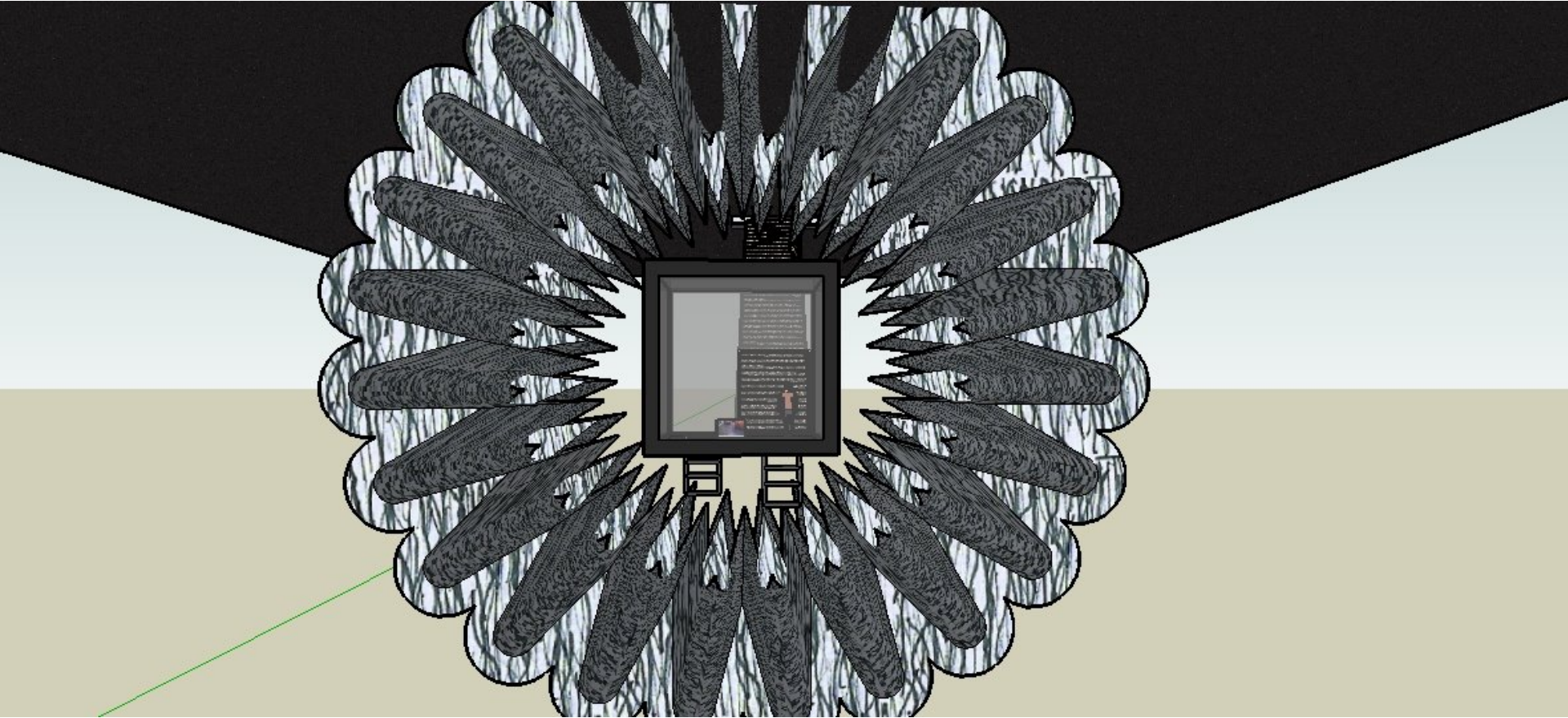




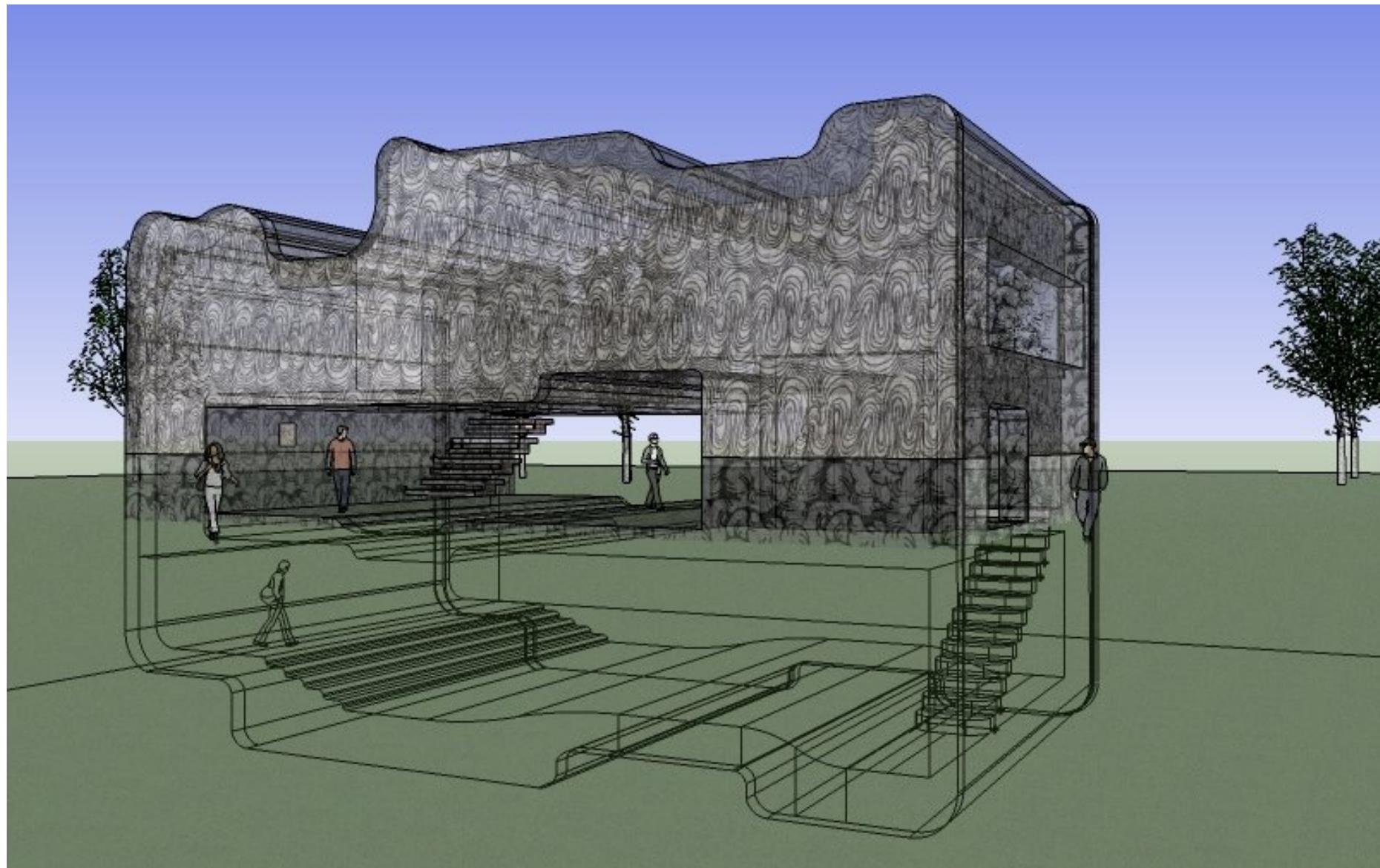


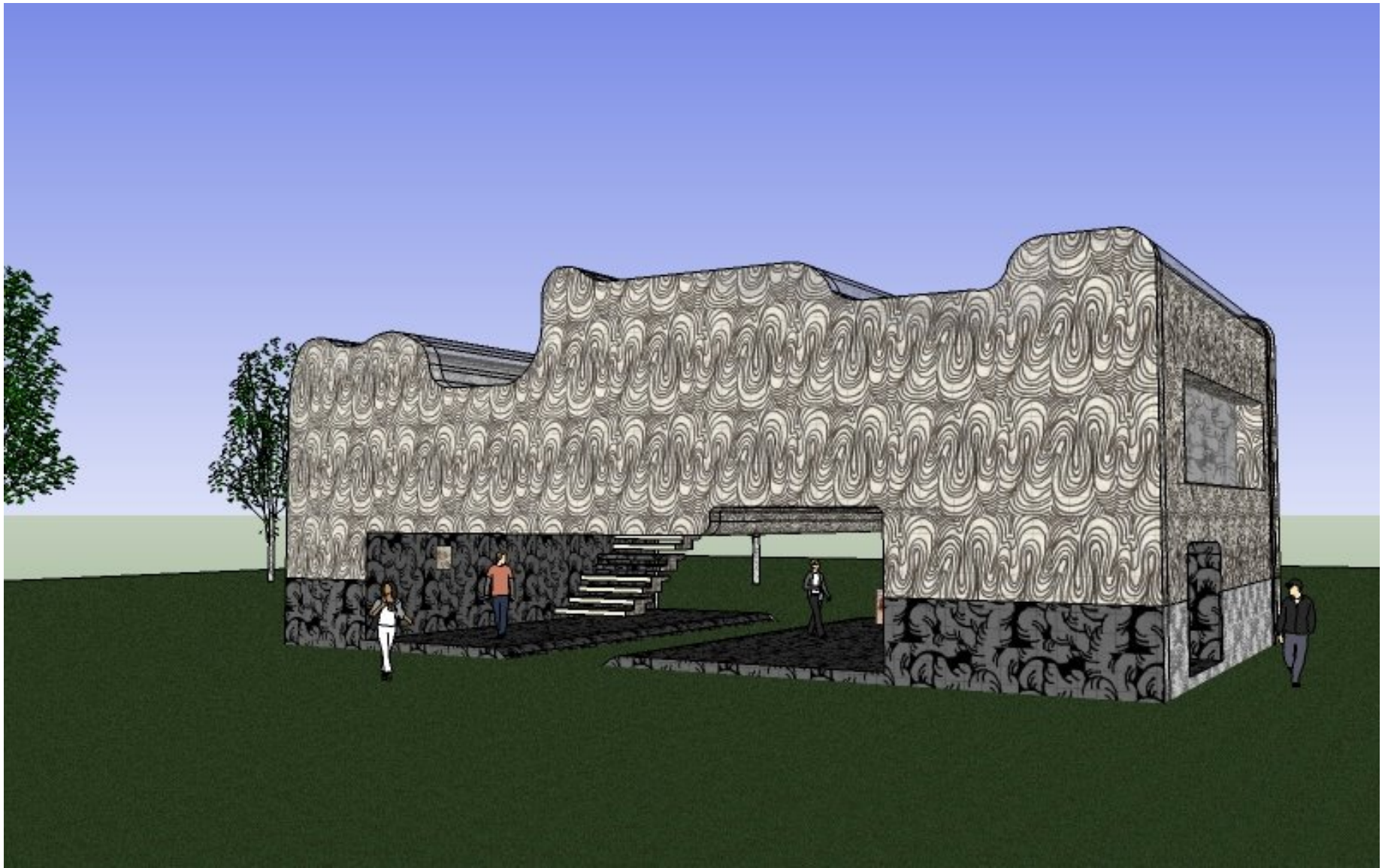
arch 1102
exp01
mamis_leung

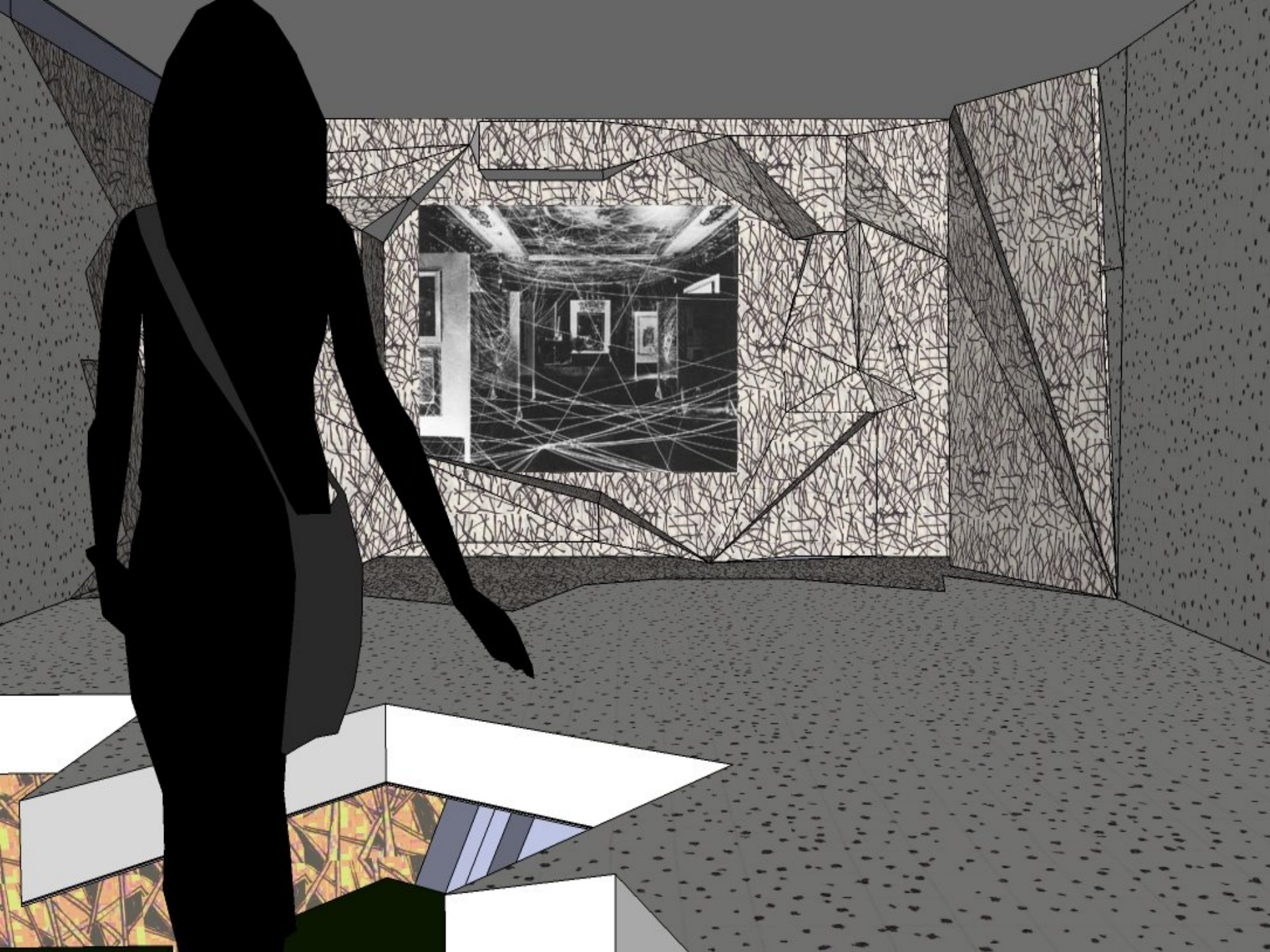


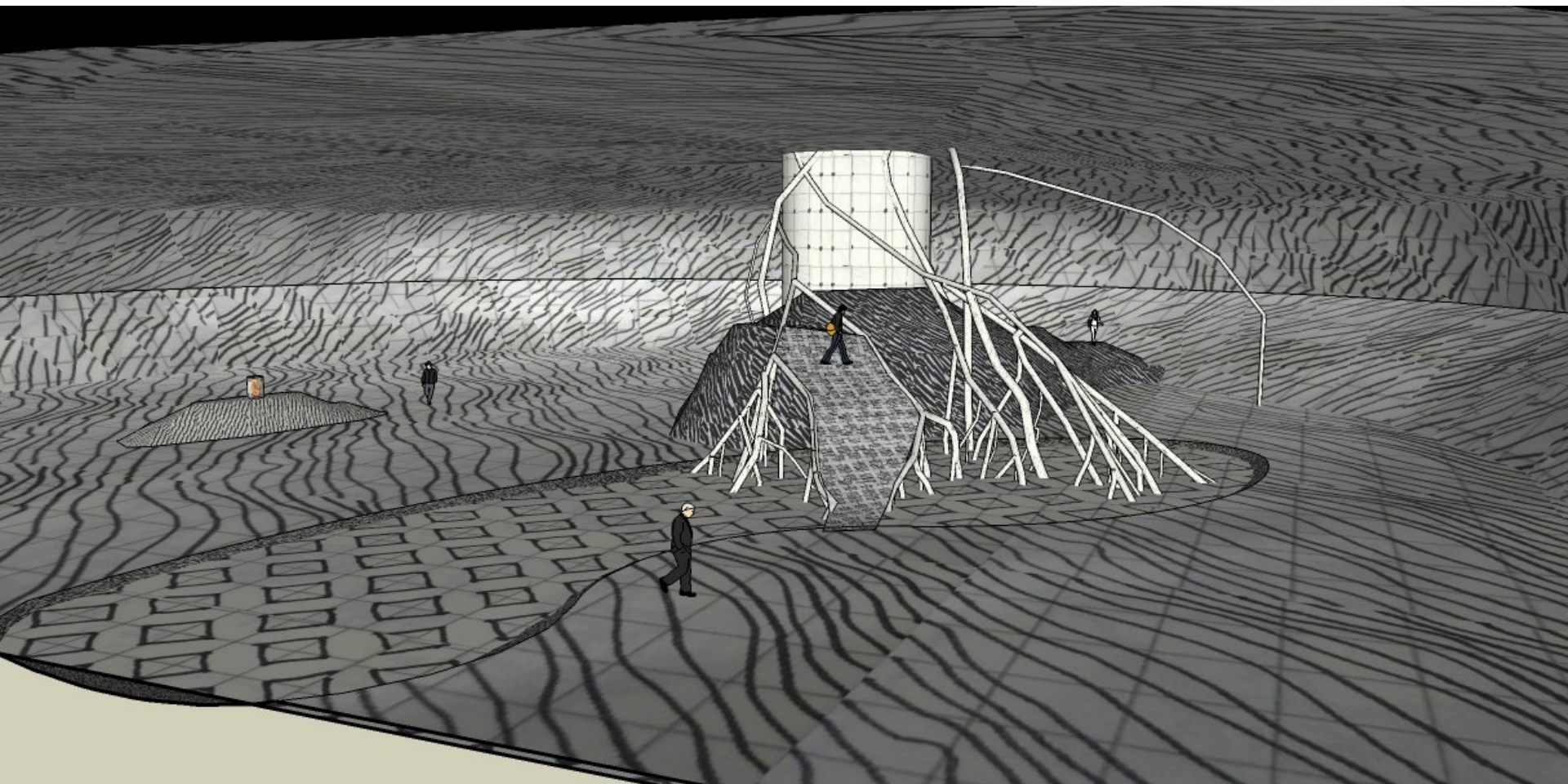


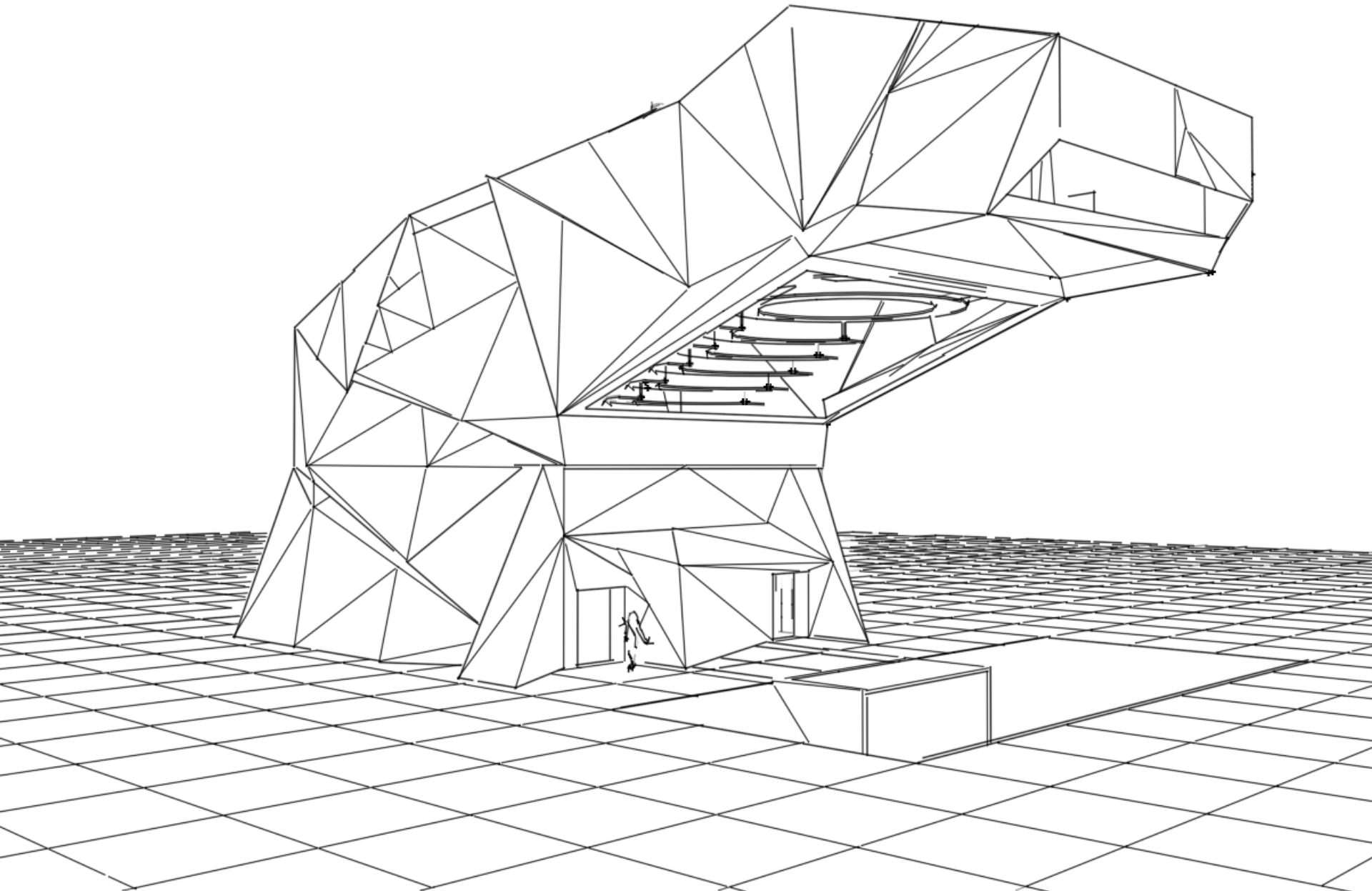


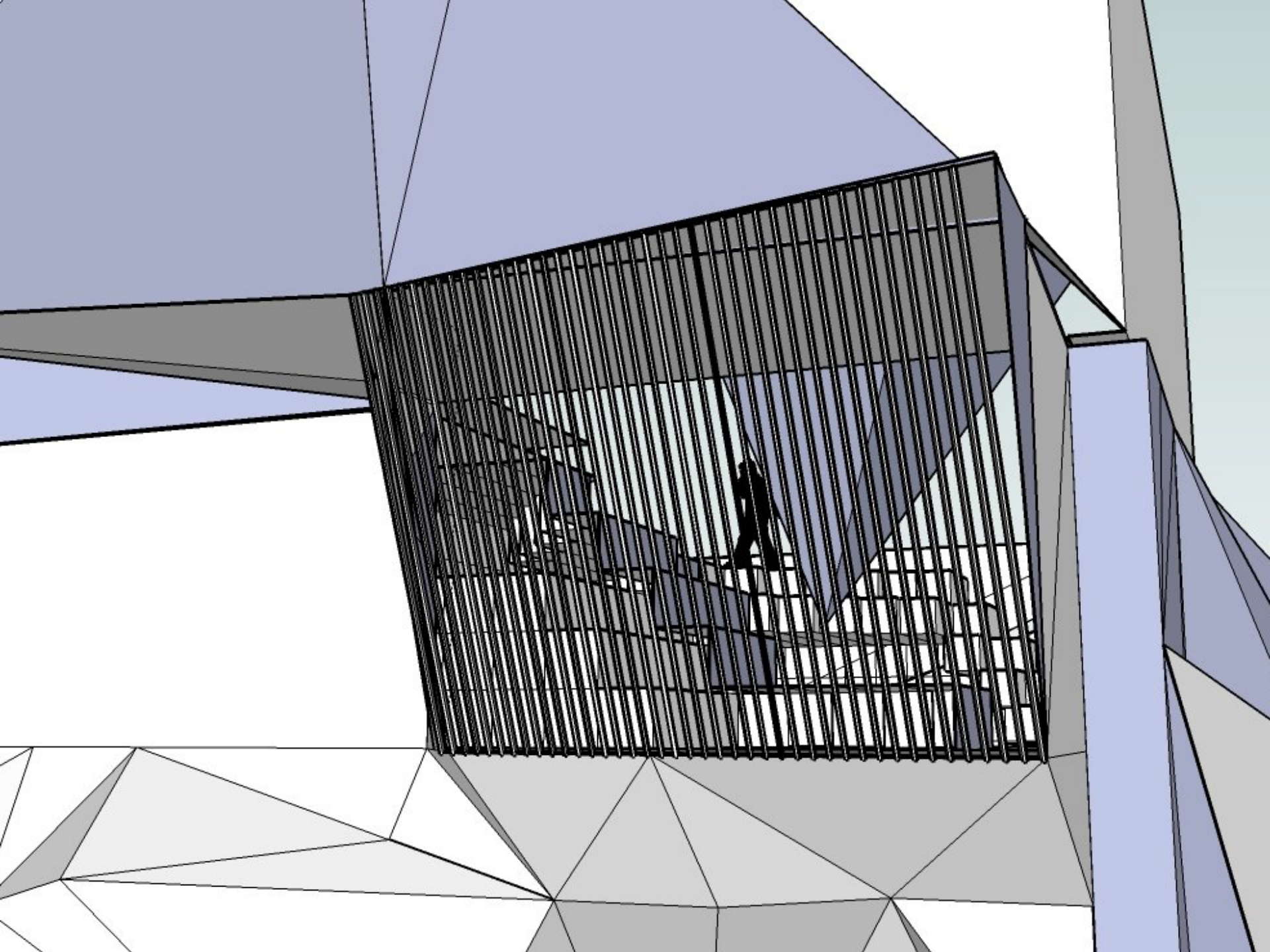


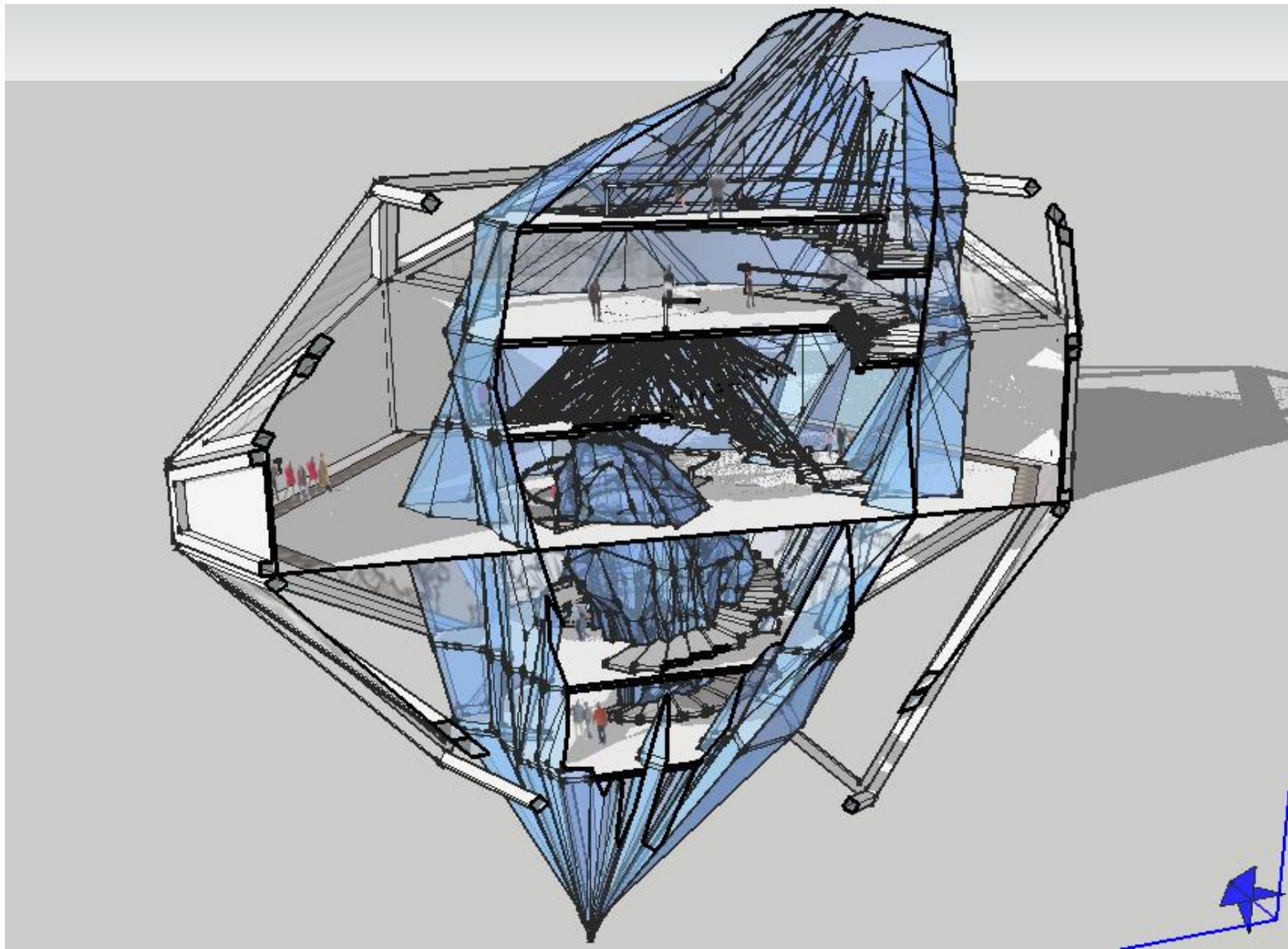




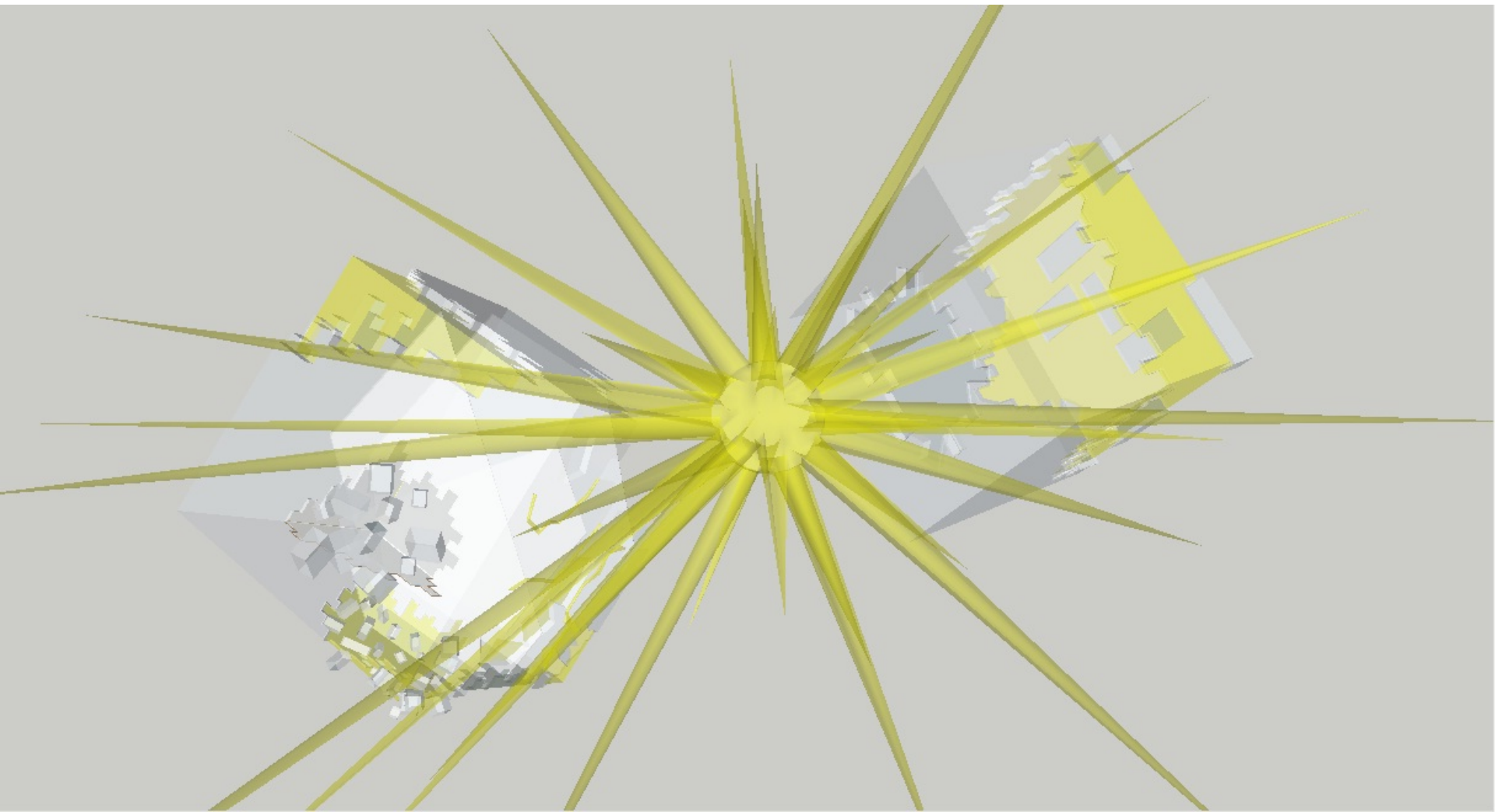




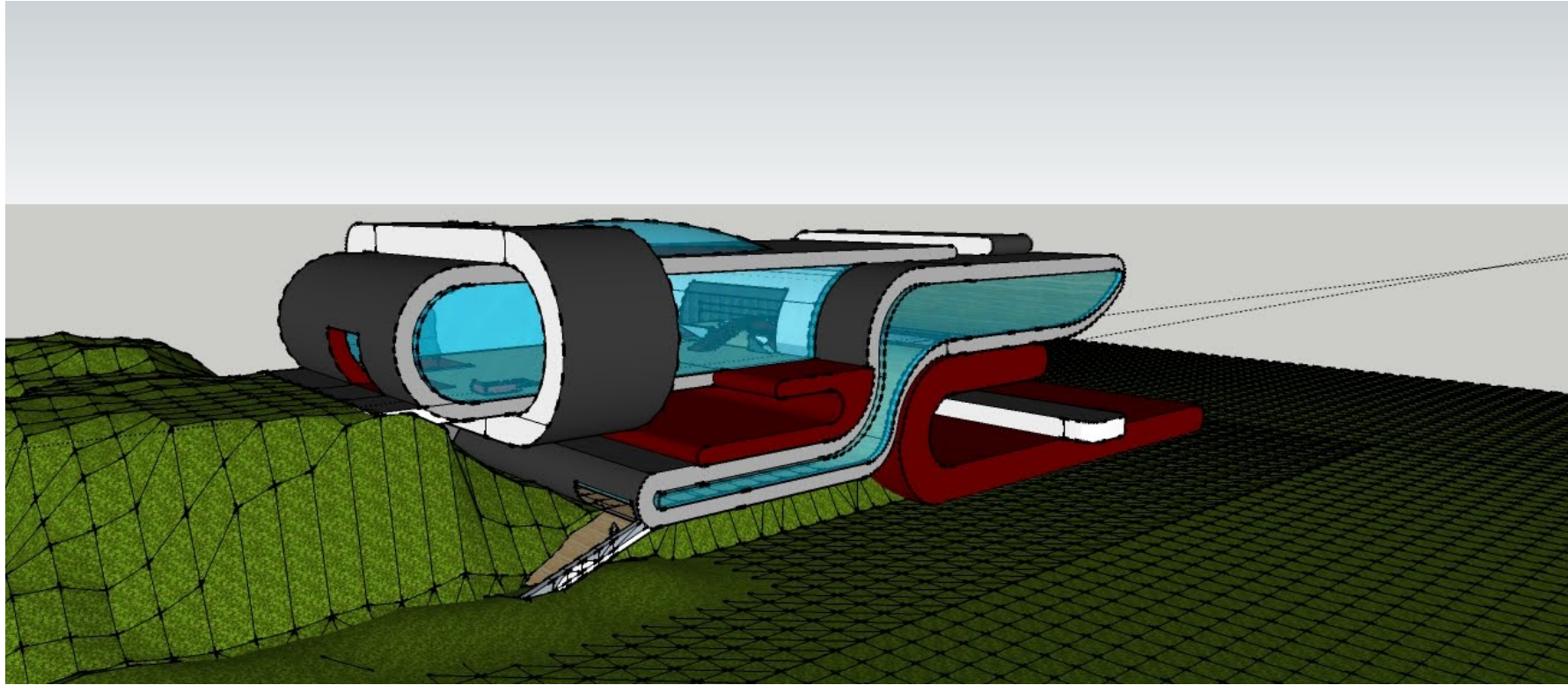




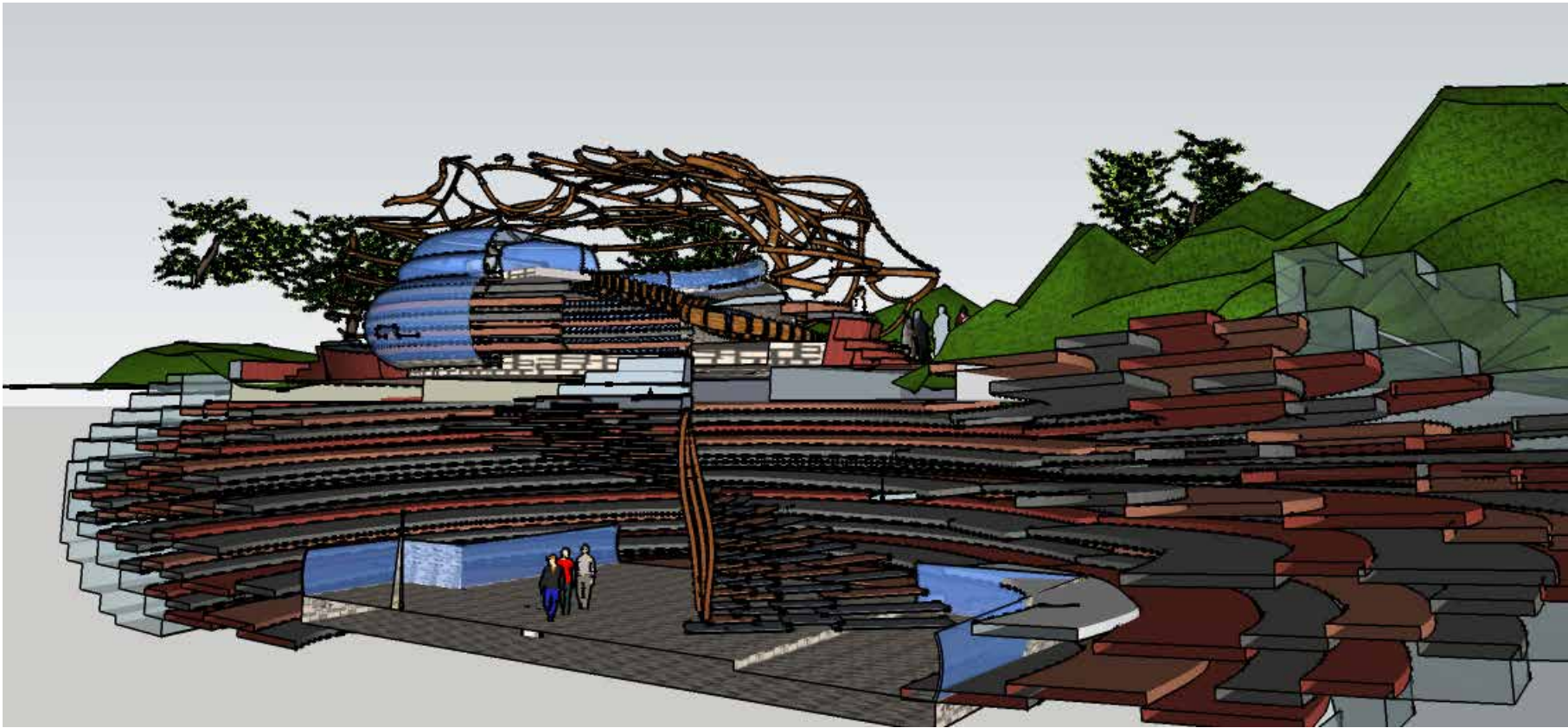
ANNA SUBOTIC



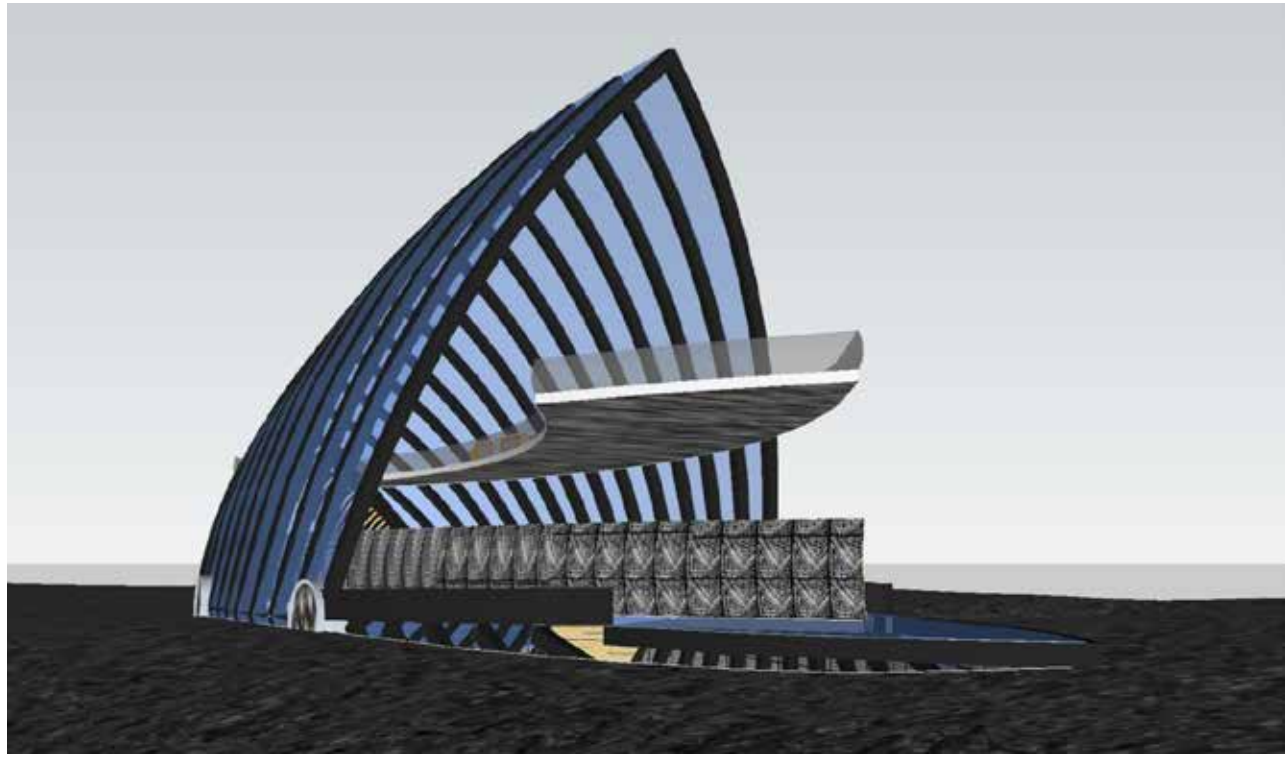
ANN MEDALA



BELA BEZRI

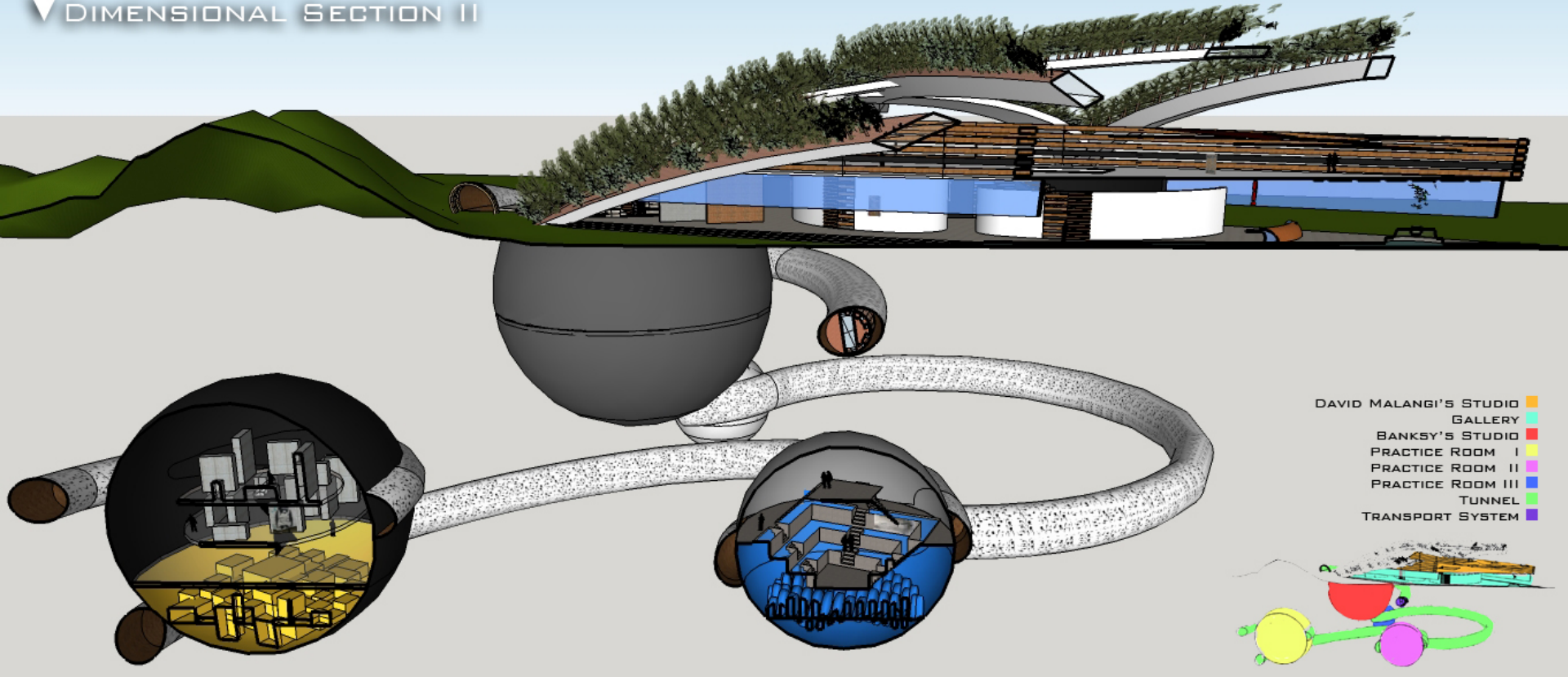


IGNAT LABAZINE



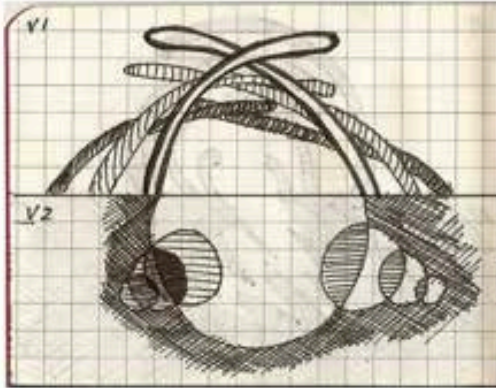
WADE COGLE

▼ DIMENSIONAL SECTION II



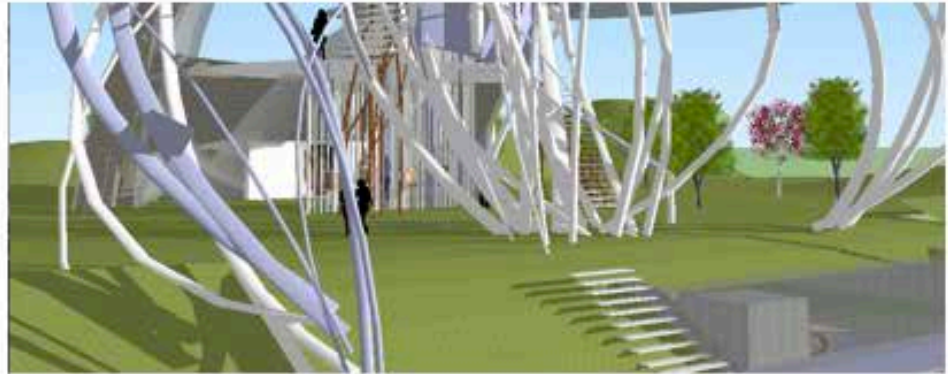
- DAVID MALANGI'S STUDIO
- GALLERY
- BANKSY'S STUDIO
- PRACTICE ROOM I
- PRACTICE ROOM II
- PRACTICE ROOM III
- TUNNEL
- TRANSPORT SYSTEM

CYRIL LEUNG



Gallery Space

This gallery space grows from Mueck's cavernous studio to the first floor of Malangi's. The root like cylinders curve and bend in exploration. The screens they create to hang the art allow the viewer to see glimpses of other artworks connecting the two artists together and intriguing the view to further explore the space.



SIOBHAN HUDSON

TODAY IN STUDIO

Note: Throughout the class students will be demonstrating modeling techniques using Google Sketchup.

- 1.** Using the scheme you developed in SketchUp (and inspired by the stairs shown in the lecture) design two sets of stairs; one that goes from the above ground studio down to the exhibition space and a second that comes from the below ground studio up to the exhibition space.
- 2.** Represent each stair with at least 2 sections. Keep all the notes, details and sections relating to each stair on one pair of facing pages. Or on two screens if you are using an iPhone, iPad or similar device.
- 3.** In consultation with your tutor take another one of the sections created in the first studio session and design two sets of stairs for that scheme. Represent each of these new stairs with at least 2 sections.

By the end of the studio session you will have at least 8 sections (representing 4 sets of stairs).

QUESTIONS?