



Purpose of study

You are invited to participate in a study of *the impact of task complexity on people's learning experience in a virtual environment*. You were selected as a possible participant in this study because *the experimental environment, named the SituationEngine, is designed for architecture and construction higher education*.

Description of study

You will be given a questionnaire (8 questions) asking about your general background on construction and video games; then you will be given 1-2 minutes to browse around in the SituationEngine environment, followed by a task that you need to complete in the game environment within 5 minutes. On completing the task, you will be given another questionnaire on your learning experience in the virtual environment. The whole process should take about 15 minutes.

ARCH1101 LOWE

ARCH1101 LOWE

THE BRIDGE

ARCH1101 LOWE

THE BRIDGE

THE FOLLY

THE FOLLY

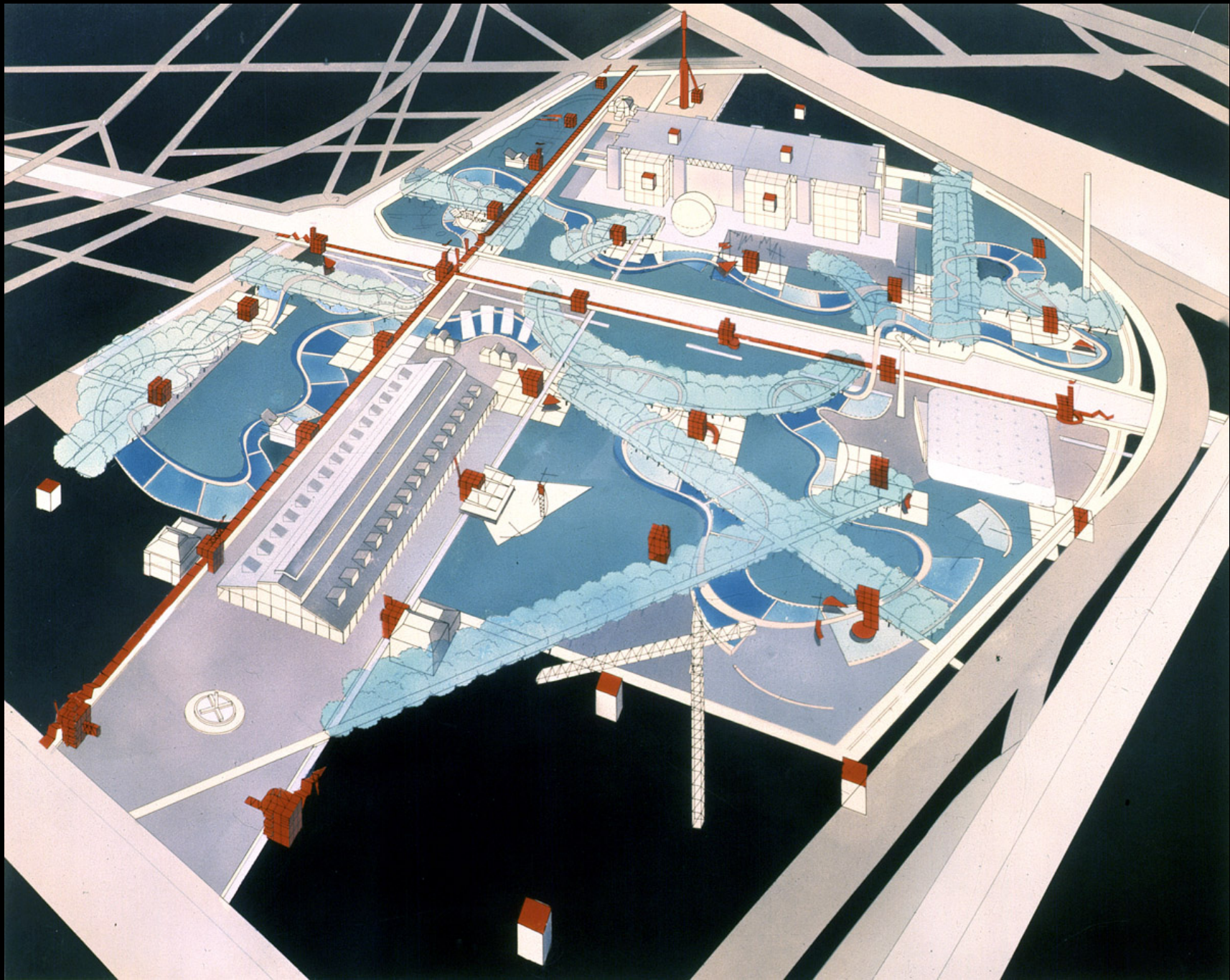
HISTORY

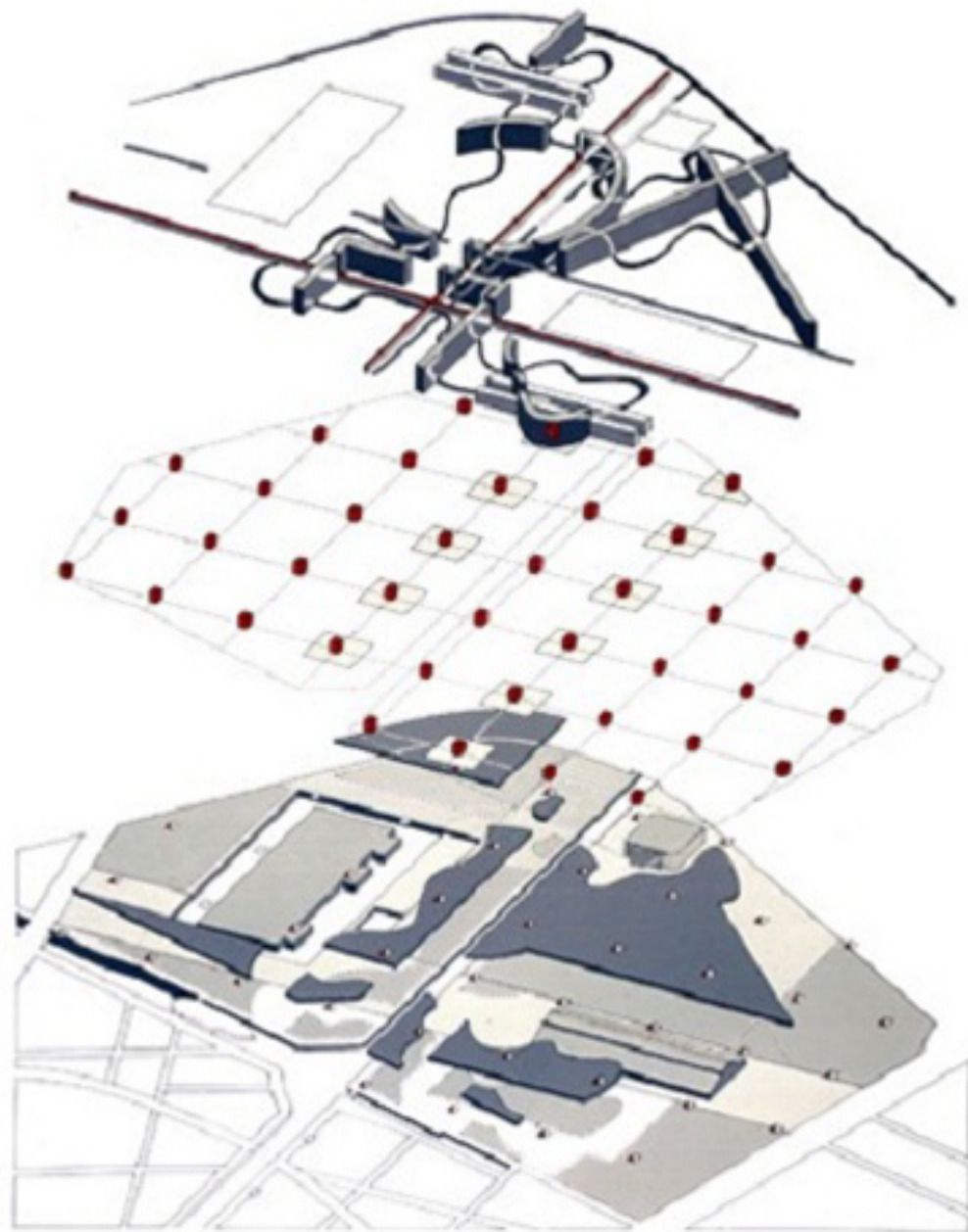




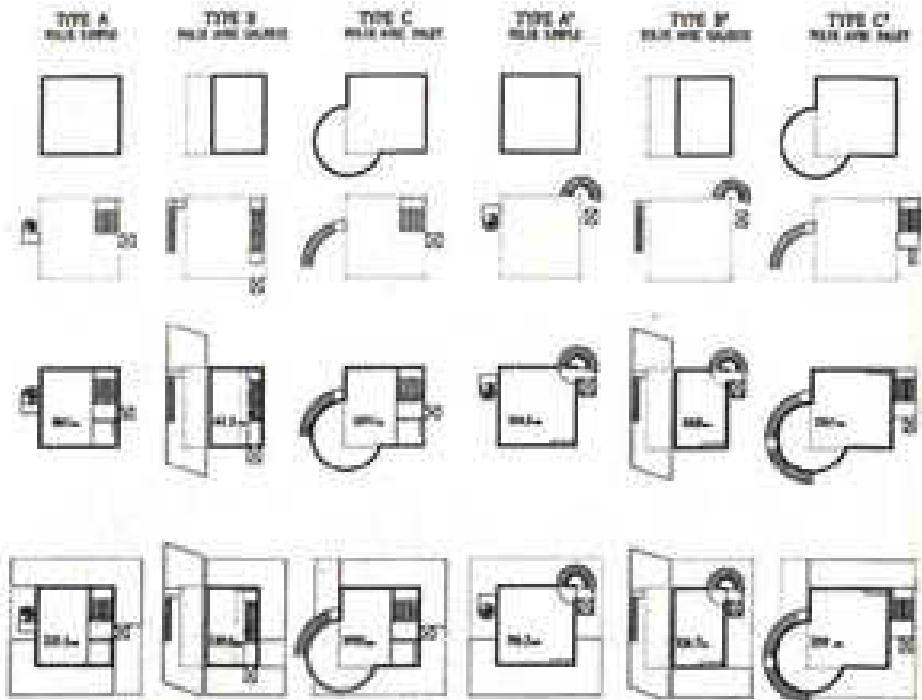
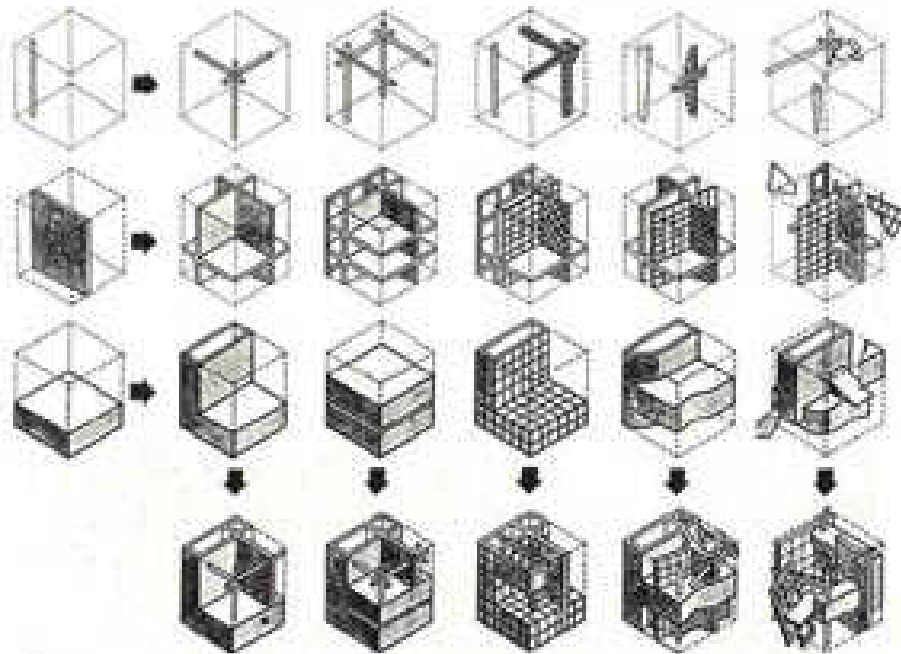


PARC DE LA VILLETTE



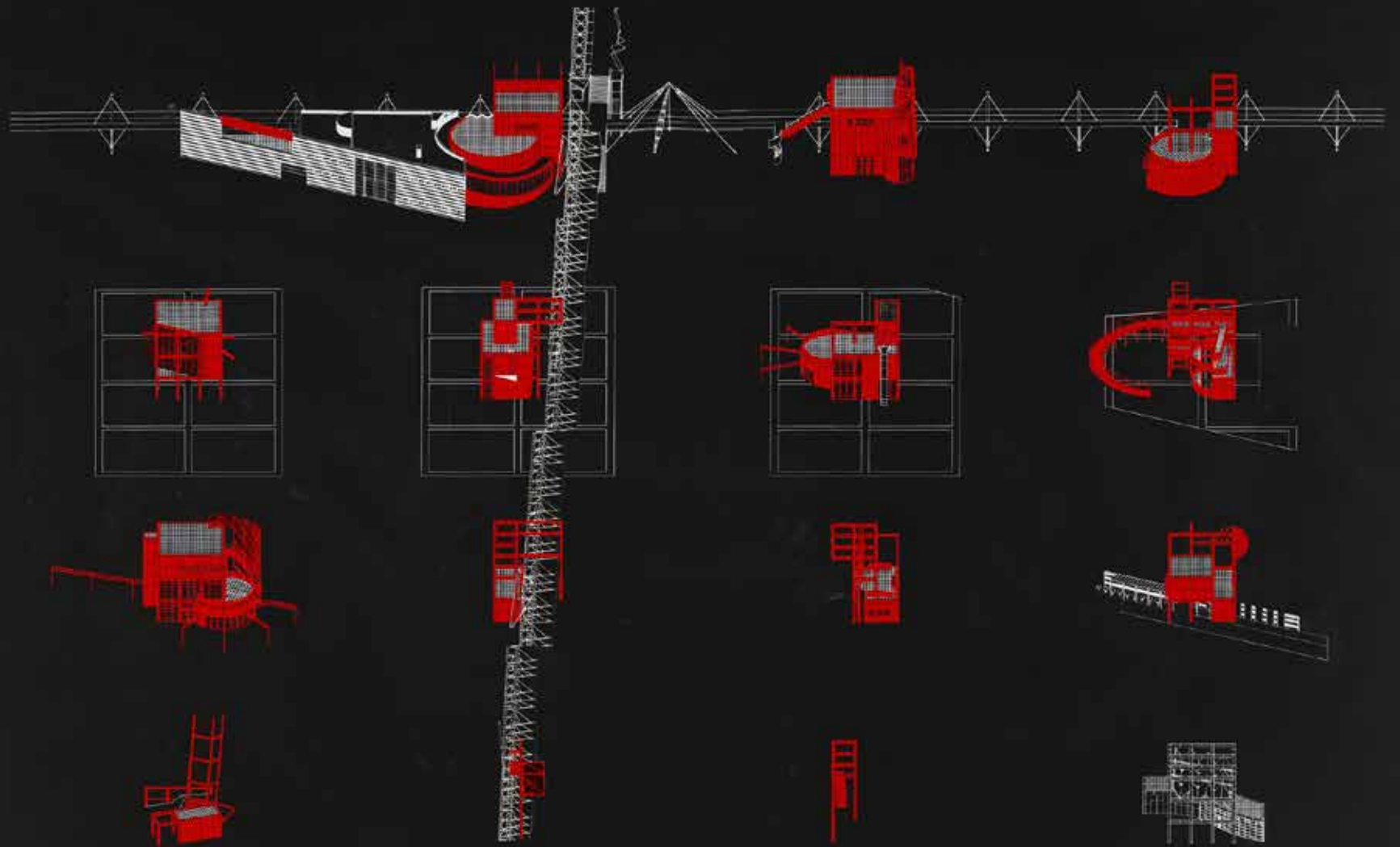


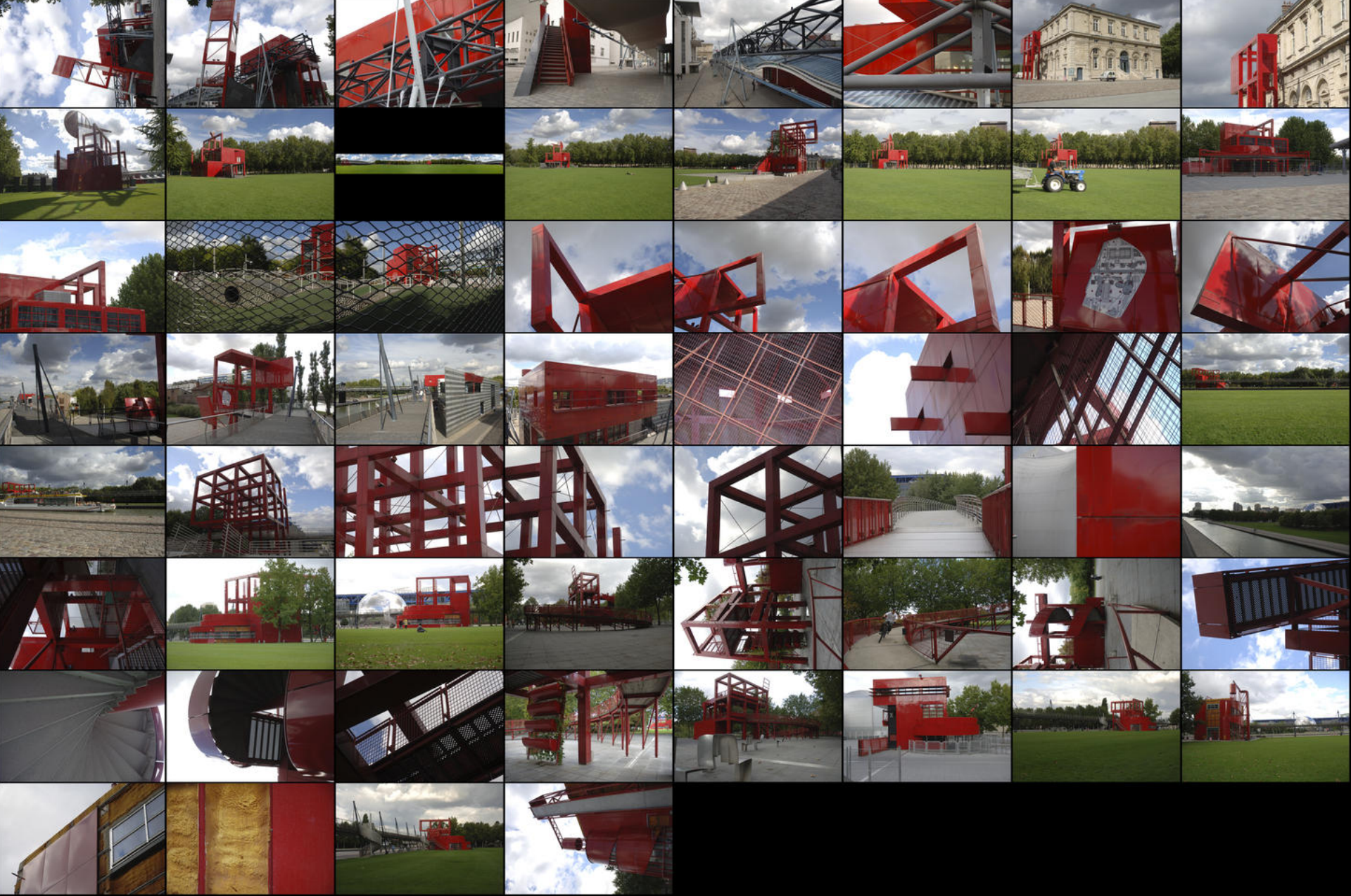
INTERSECTION · REPETITION · QUALIFICATION · DISTORTION · FRAGMENTATION



1. WALLS AND INTERIOR PLANES (SOLID WALLS, CURTAIN WALLS, TRELLIS) CAN BE COMBINED ACCORDING TO SPECIFIC RULES (INTERSECTION, REPETITION, QUALIFICATION, DISTORTION, FRAGMENTATION)

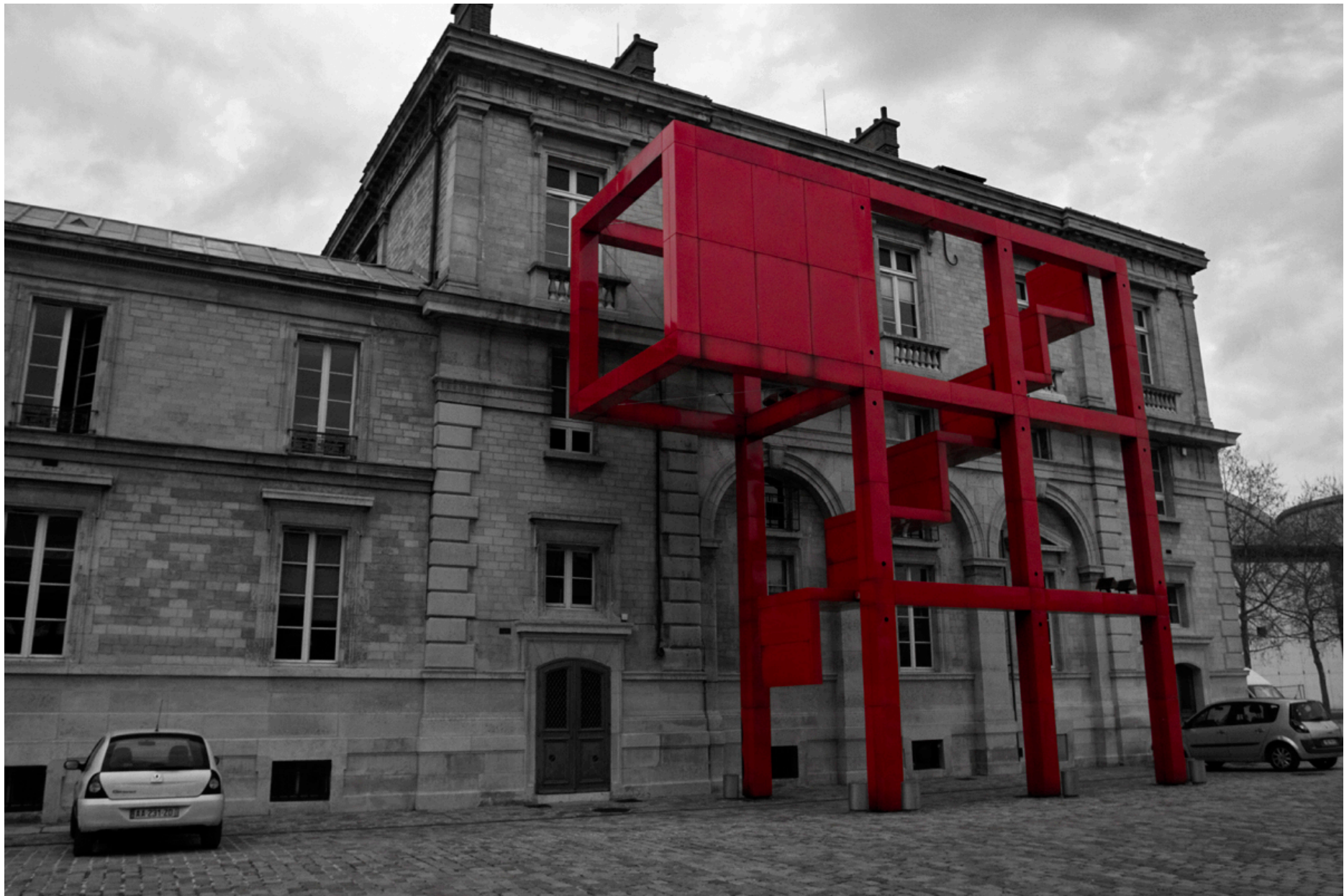
2. A TYPOLOGY OF POSSIBLE SURFACES AND CONFIGURATIONS AT THE USER'S DISPOSAL

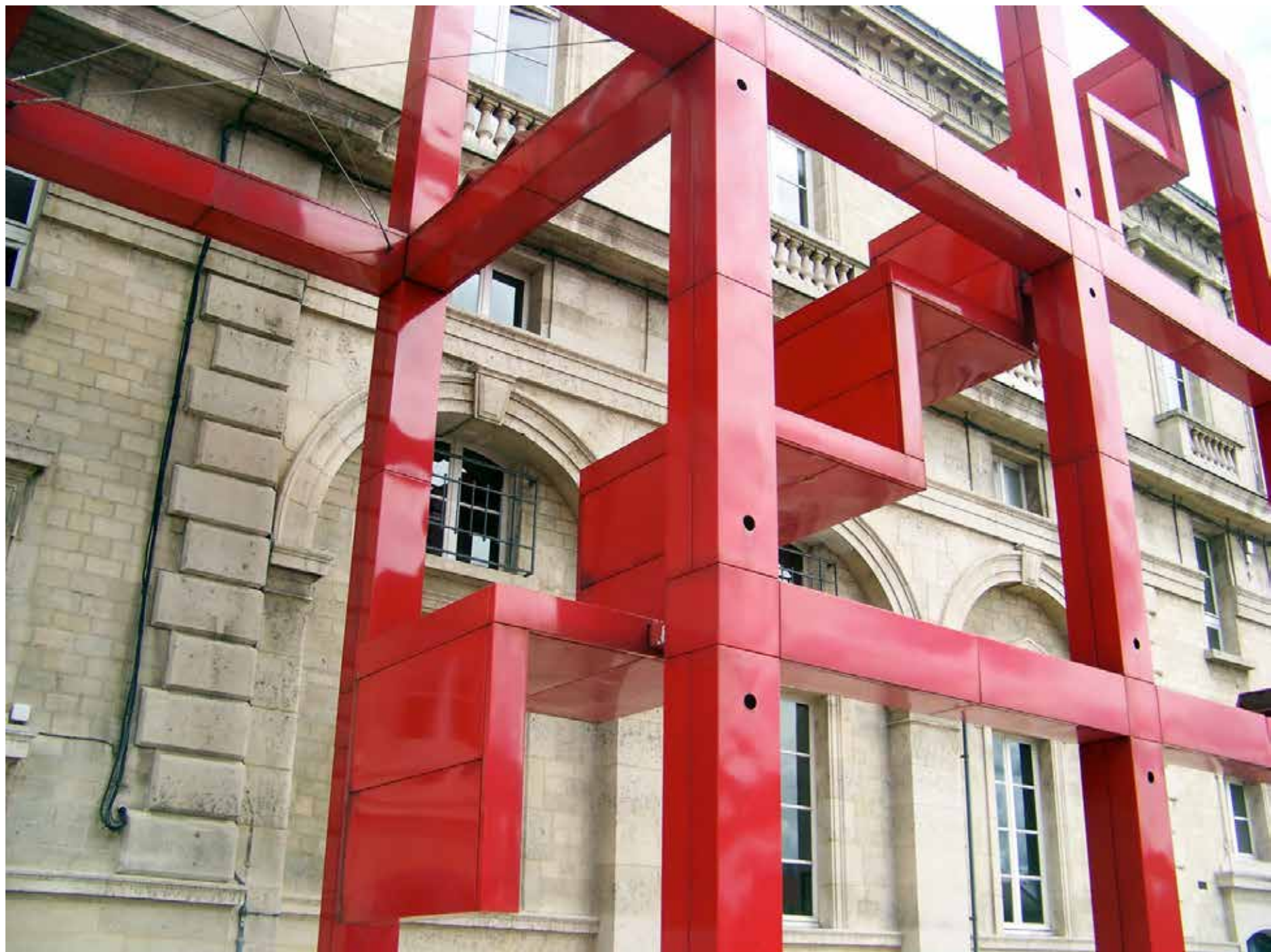
















ARCH DAILY

DEZEEN

CALL FOR PROPOSALS FOLLY

A project sponsored by Sculpture Sculpture Park and the Architectural League



DEADLINE

MONDAY, JANUARY 7, 2013

Sculpture Sculpture Park and the Architectural League invite architects and designers to apply for Folly, a design/build studio residency (March-May 2013) leading to an exhibition at Sculpture Sculpture Park (opening June 2013).

DESCRIPTION

Sculpture Sculpture Park and the Architectural League invite emerging architects and designers to apply for the opportunity to build and exhibit a full-scale project around the theme of an architectural folly. This residency was established to explore the intersection between architecture and sculpture and the growing synergy in references, concepts, and techniques between the two disciplines.

Sculpture and the League welcome proposals for large-scale projects and installations that explore contemporary interpretations of the architectural folly. Especially popular among the Romantics of the 18th and 19th centuries, architectural follies are small-scale structures, which often have no discernible purpose and are placed within a garden or landscape as a means to draw the eye to specific points or to frame a view. A jury of architects, artists, and landscape architects will select a single project to be realized within the grounds of Sculpture Sculpture Park. The recipient will receive a \$5,000 production grant to fund the project, as well as full access to the resources and fabrication facilities of Sculpture Sculpture Park's outdoor studio during a two-month residency at the Park, beginning in March 2013. Administrative support for exhibiting, fundraising, and securing additional contributions, if necessary, will also be available. The completed project will open to the public in early June 2013 with an accompanying electronic publication.

Last year, Curator, a project conceived by architects Jerome W. Halpern and Clifford Koppig, was selected from 112 submissions. Their project, currently still on view at Sculpture Sculpture Park through March 2013, combined minimal structural framing with a multiple plastic chain that bounced the landscape from multiple angles, creating a volumetric and ephemeral interior space. For more information about Curator, including a free downloadable PDF with an interview with the architect, visit www.sculpturesculpturepark.org or www.archleague.org.

SITE

Sculpture Sculpture Park is a unique urban waterfront Park located in Queens, NY. Applicants are strongly encouraged to visit Sculpture Sculpture Park before submitting their application and visit Sculpture Sculpture Park (www.sculpturesculpturepark.org) to learn about the history and context of the project. Applicants must take into account the site's unique urban outdoor environment and be aware that installations are subject to final approval by Sculpture and League staff and must meet safety requirements to be able to withstand the effects of weather and public use.

Applicants should email the following (detailed) instructions below to folly@archleague.org no later than 11:59 p.m. on Monday, January 7, 2013.

COVER SHEET

Applicant must include a cover sheet with name, mailing address, telephone number, email, project title, and a single paragraph of not more than 100 words summarizing your proposed project. Please include on your cover sheet whether you previously submitted a proposal for Folly. If you are applying as a team, please include the names and emails for each team member and identify one team member as the Lead Contact.

PROJECT PROPOSAL AND BUDGET

Applicants should submit a project proposal of up to 5000 words that clearly describes the project and its relationship to the theme of the architectural folly. Applicants are encouraged to submit renderings and sketches of the proposed project.



The proposal should address plans for the team, recycling and disposal of all material used in the project. A preliminary budget should also be included that identifies expenses and potential additional funding sources and in-kind donations, if necessary, beyond the production grant provided.

CURRENT RESUME/CV

The resume/CV should include information about your education, work and teaching experience, exhibition history, if applicable, awards, grants, and residencies, and other relevant information.

DIGITAL IMAGES AND BLIND SCRIPT

Up to ten (10) digital images of recent work. (These images are in addition to images submitted as part of the project proposal.) Files may be full or cropped to any resolution. A file-naming system that corresponds to the submitted images should also be included. For each image, include the title, date, and a brief description of the work.

APPLICATION FORMAT AND DEADLINE

The application package should be submitted as a single PDF (8.5" x 11" page) of not more than 25 pages and 15 megabytes, emailed to folly@archleague.org no later than 11:59 p.m. on Monday, January 7, 2013. Please put the project title in the subject line of the email.

AWARD, RESIDENCY, AND EXHIBITION

One project will be chosen. The recipient will receive a \$5,000 production grant towards realizing the proposed project. The recipient will also have full access to the studio space and fabrication resources of Sculpture Sculpture Park from March to May 2013. The finished project will go on view in Sculpture Sculpture Park beginning in June 2013.

ELIGIBILITY

Architects and related designers are invited to apply. Applicants do not need to be registered architects. Architects and designers outside of New York City are eligible to apply, but housing and transportation are not provided as part of the award. If selected, non-resident applicants will have to make their own living and travel arrangements. Full-time, non-credit students are not eligible to apply.

JURY

Melissa Auld
City Center
John Harland
Gregory Markowitz
Dale Saxe

PROJECT DIRECTOR

Glenn Goldstein, Sculpture Sculpture Park
Gregory Winesap, The Architectural League

QUESTIONS

Applicants may email questions to folly@archleague.org. All questions and answers will be posted on the Architectural League's and Sculpture Sculpture Park's websites.

ABOUT SCAFFOLDERS SCULPTURE PARK

Sculpture Sculpture Park is an internationally renowned outdoor venue for presenting public art and artist residency programs that also serves as a vital New York City park offering a wide variety of free public programs. Sculpture Sculpture Park is the only site in the New York Metropolitan area specifically dedicated to providing artists with opportunities to create and exhibit large-scale sculptures and multi-media installations in a unique outdoor environment that encourages strong interaction between artists, educators and the public. The Park's mission is based on the belief that recreation, education, and creative expression are essential to the survival, humanity and improvement of our urban environment. www.sculpturesculpturepark.org

ABOUT THE ARCHITECTURAL LEAGUE

The mission of the Architectural League is to advance the art of architecture. The League carries out its mission by promoting excellence and innovation, and by fostering community and discussion in an independent forum for creative and intellectual work in architecture, urbanism, and related disciplines. We present the work and ideas of the world's most interesting and influential architects and designers in New York, national and international conferences, through forums, exhibitions, publications, and the website work. We identify and encourage talented young architects, through competitions, grants, exhibitions, and publications. And we help shape the future of our



built environment by stimulating debate and providing design thinking about the critical issues of our time. www.archleague.org

SUPPORT

Folly is a partnership of Sculpture Sculpture Park and The Architectural League of New York.

The program is funded in part by the J. Clarence Mills Fund of the Architectural League. The program is also supported, in part, by public funds from the New York State Council on the Arts, a state agency, and by public funds from the City of New York Department of Cultural Affairs in partnership with the City Council. Sculpture Sculpture Park's Exhibition Program is also supported by the generosity of Lily Auchincloss Foundation, Broadway Philanthropies, Mark & Susan Lambert Foundation Fund of Yale Foundation, Sparrow C.C.

Special thanks to the City of New York, Mayor Michael R. Bloomberg, Queens Borough President Helen M. Marshall, City Council Speaker Christine C. Quinn, Assemblymember Catherine Rivera, City Council members Jimmy Van Buren and Peter F. Vallone Jr., and the Department of Parks & Recreation, Commissioner Victoria M. White.



THE ARCHITECTURAL LEAGUE NEW YORK

THE BRIDGE

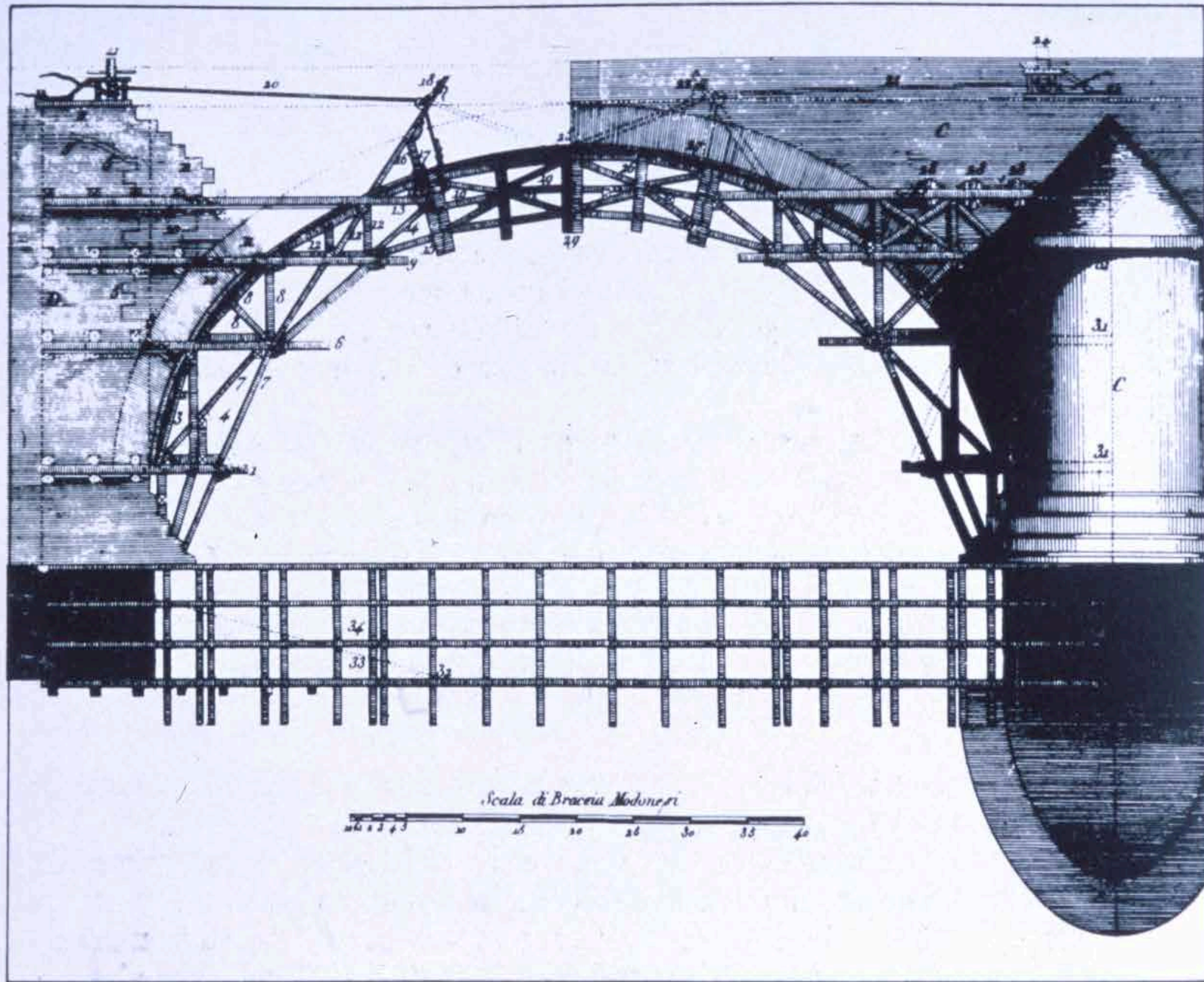
ENGINEERING

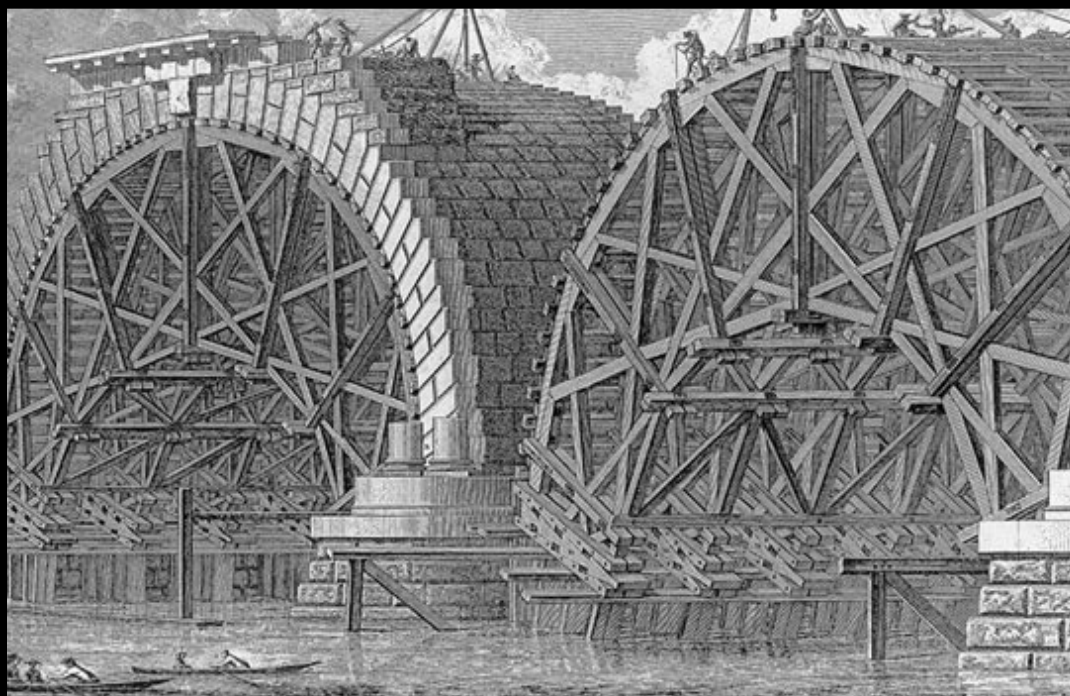
**ENGINEERING
ARCHITECTURE**

**ENGINEERING
ARCHITECTURE
SCIENCE**

ENGINEERING
ARCHITECTURE
SCIENCE
ART

CONSTRUCTION



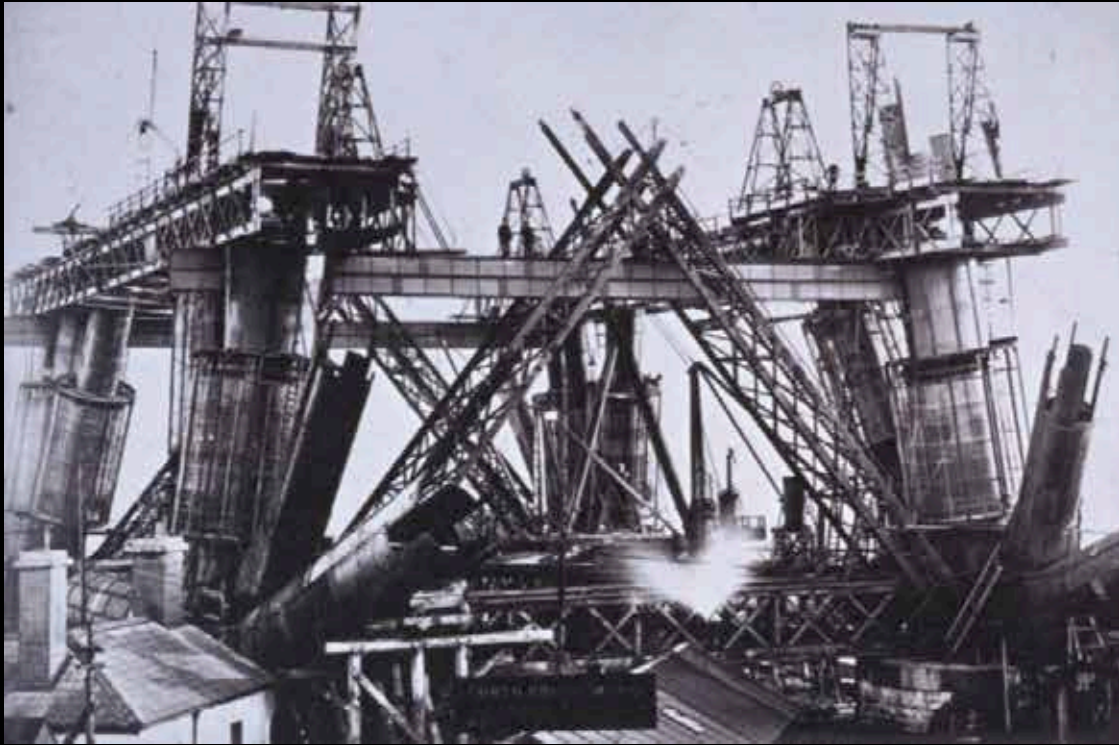


A · VIEW · OF · PART · OF · THE · INTENDED
IN · AUGUST
BY · ROBERT · MYLNE · ARCHITECT

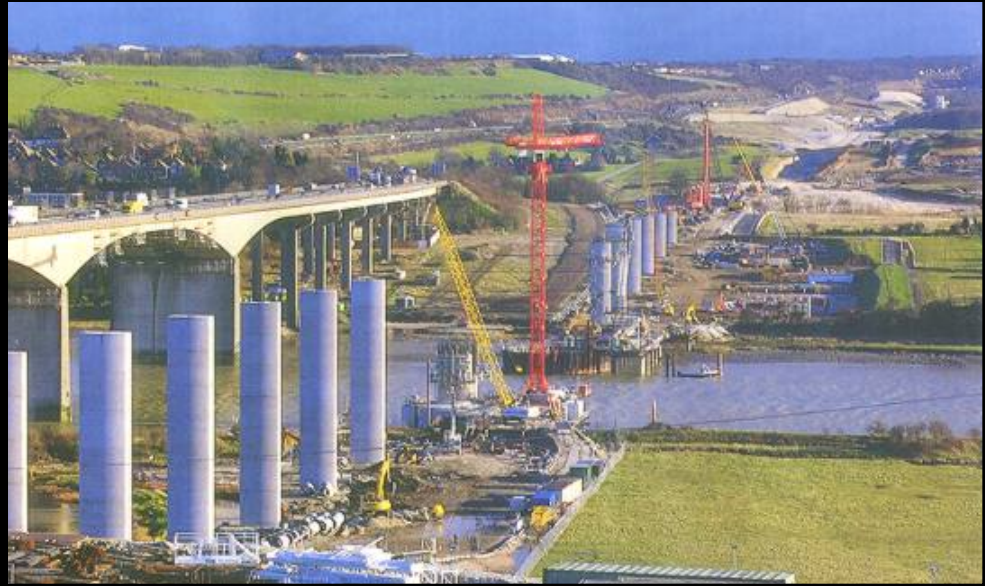


BRIDGE · AT · BLACKFRIARS · LONDON
MDCCLXIII
ENGRAVED · BY · PIRANESI · AT · ROME







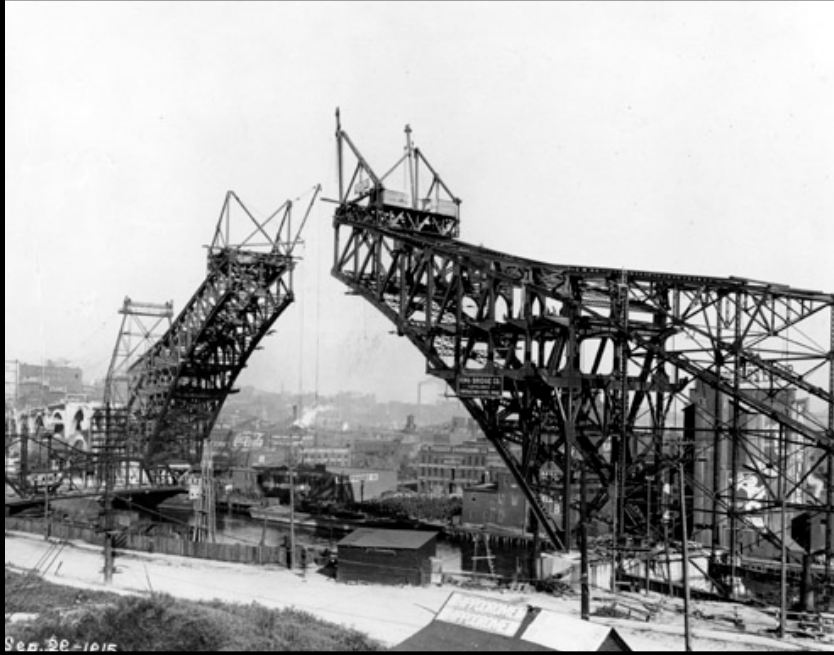




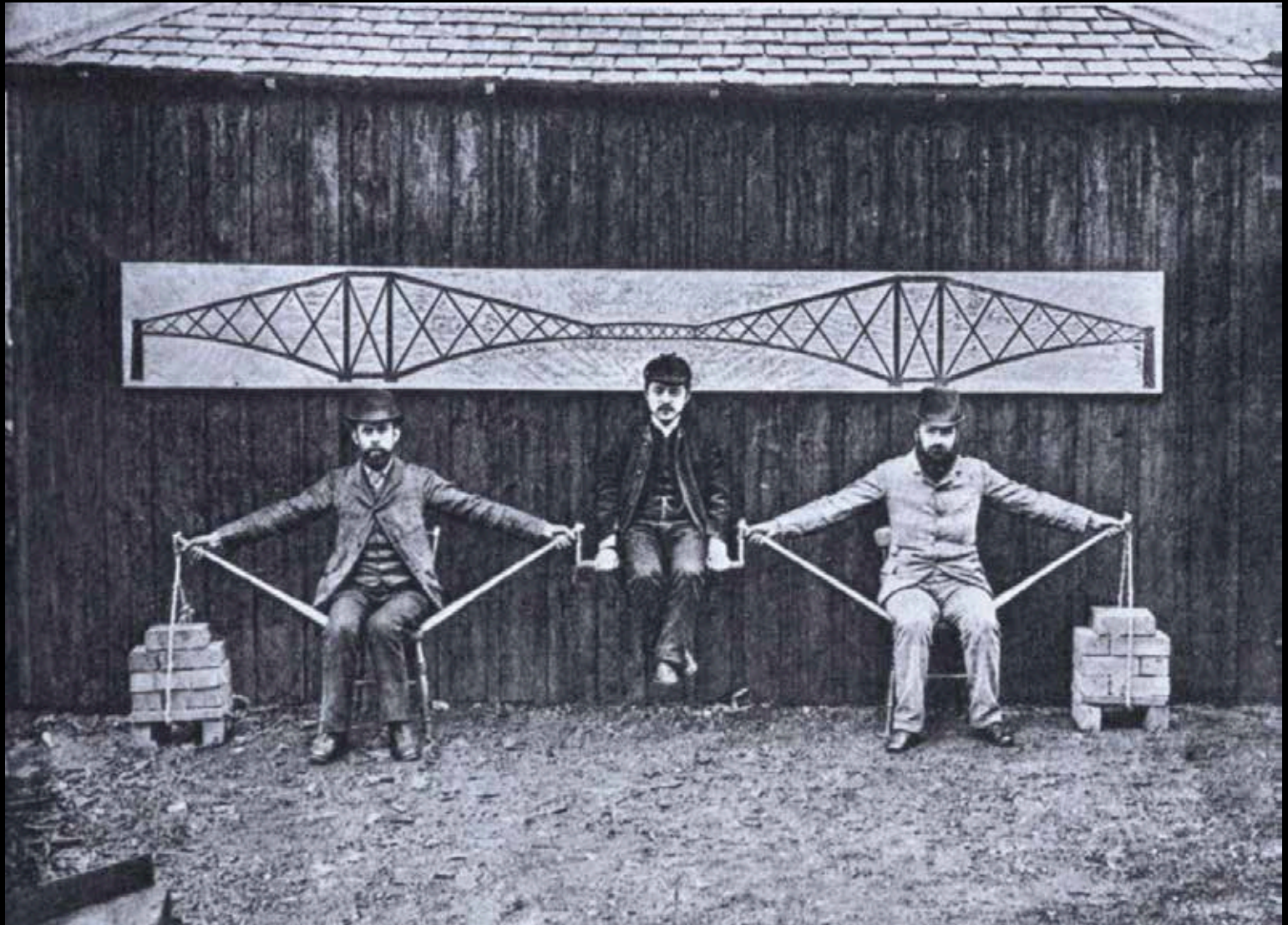




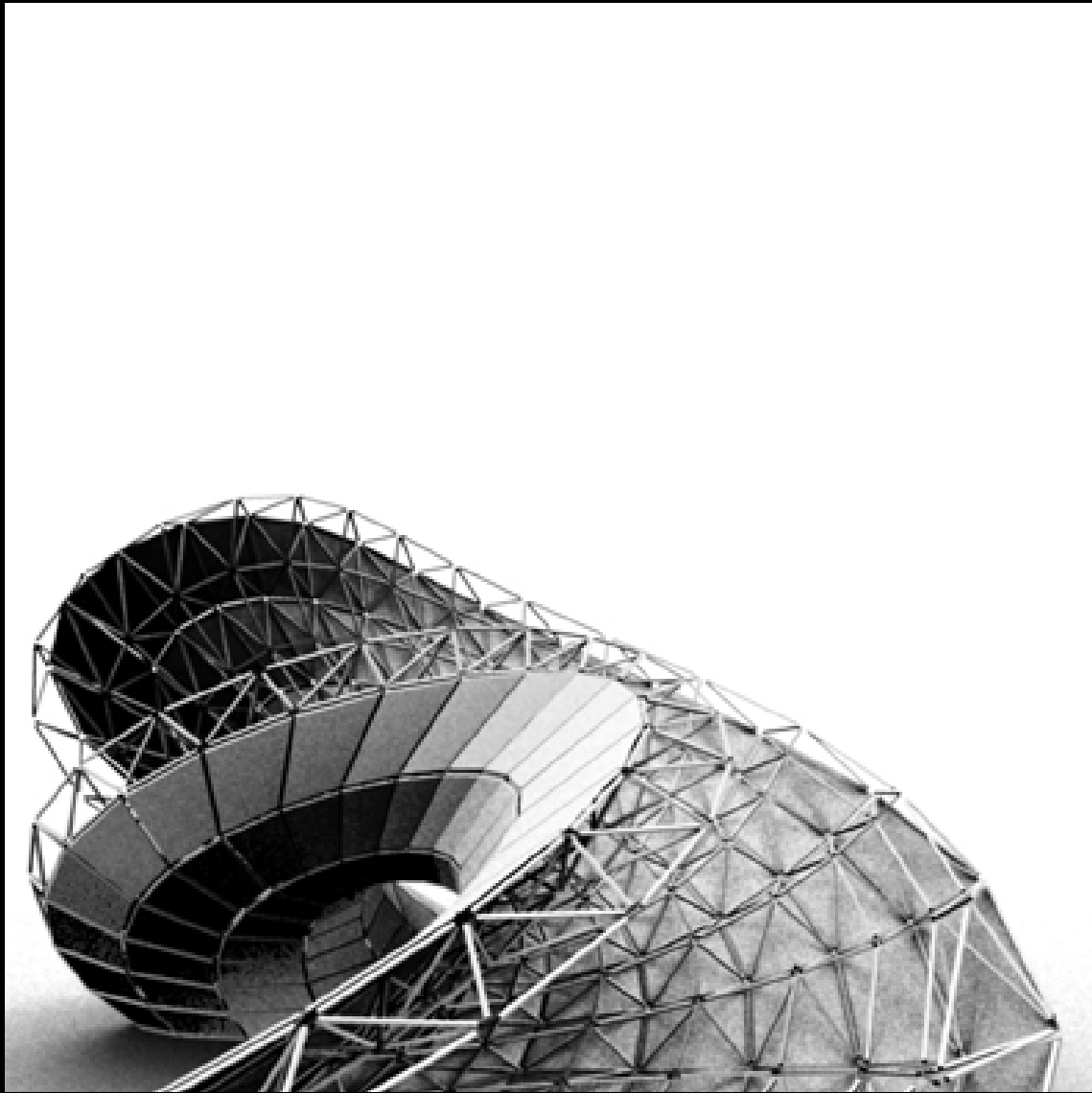


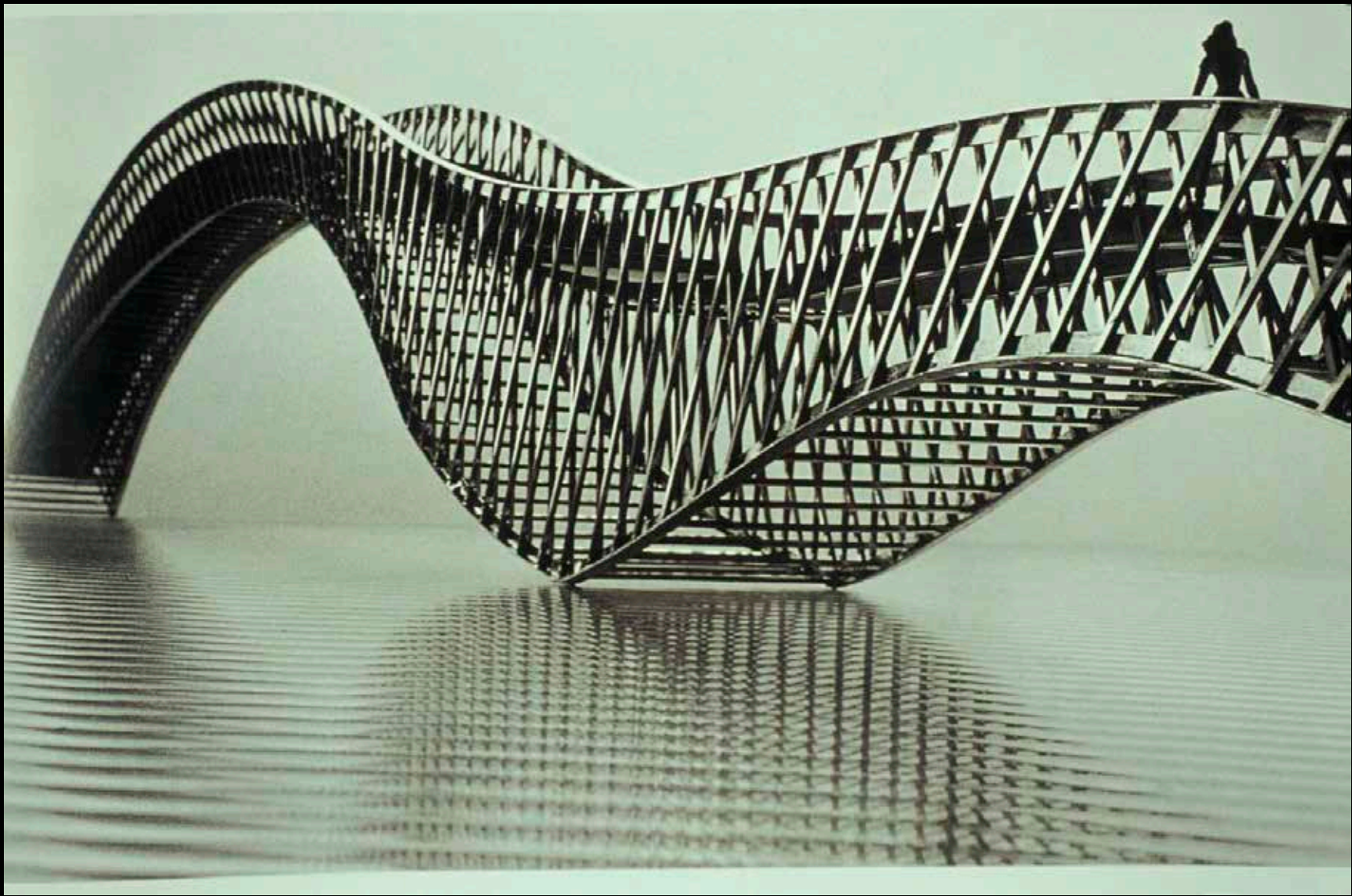


STRUCTURE

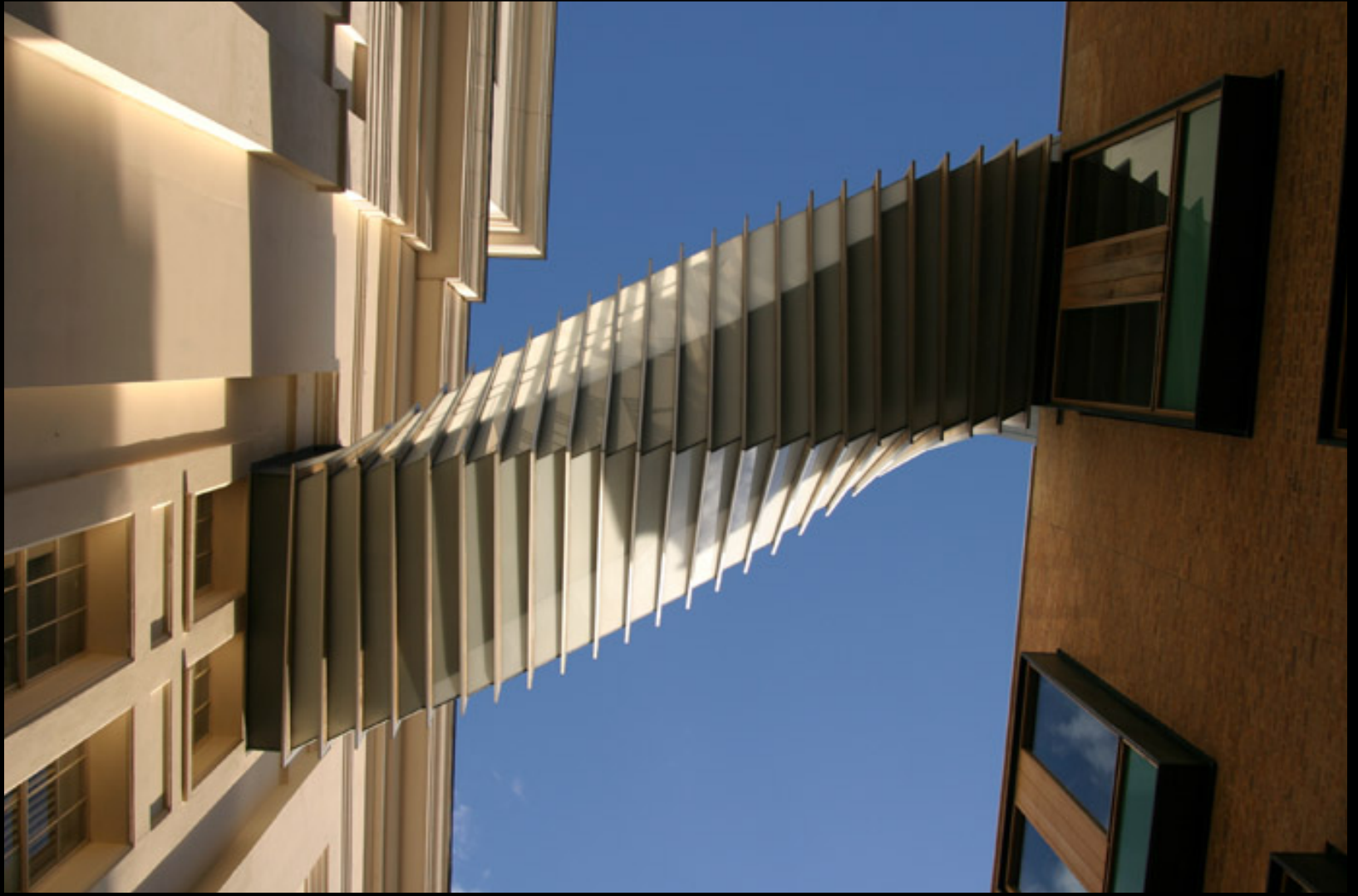


FORTH BRIDGE

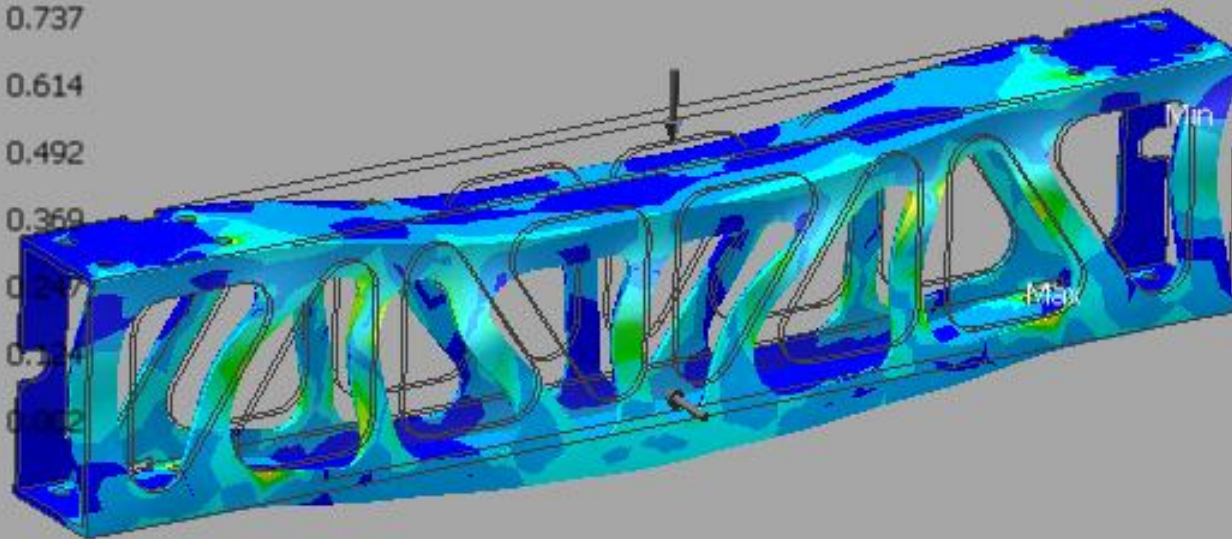
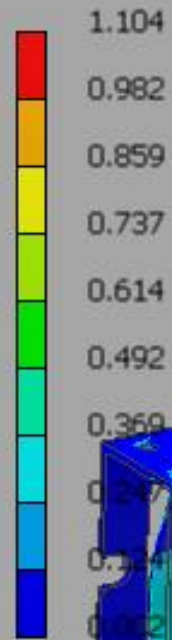


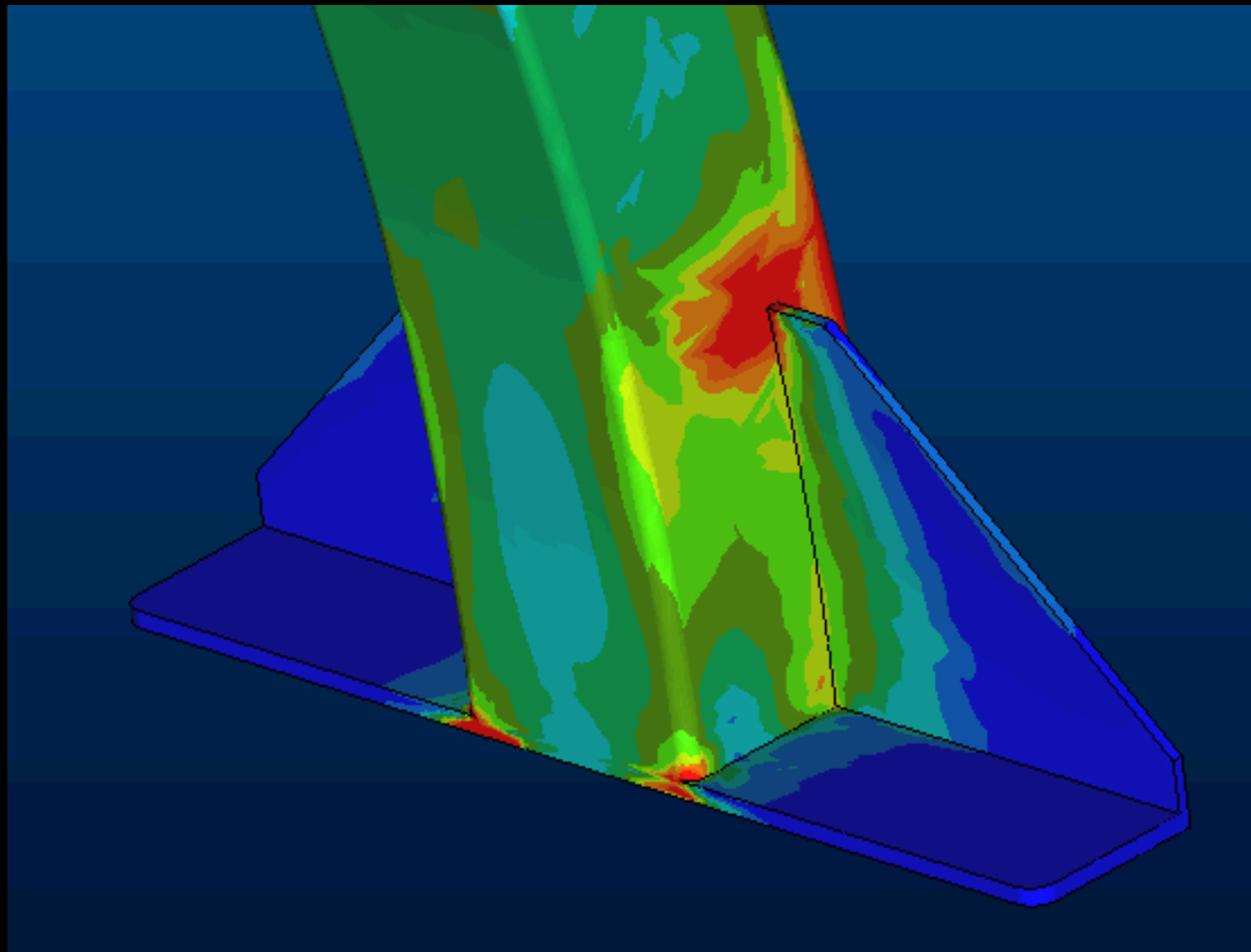


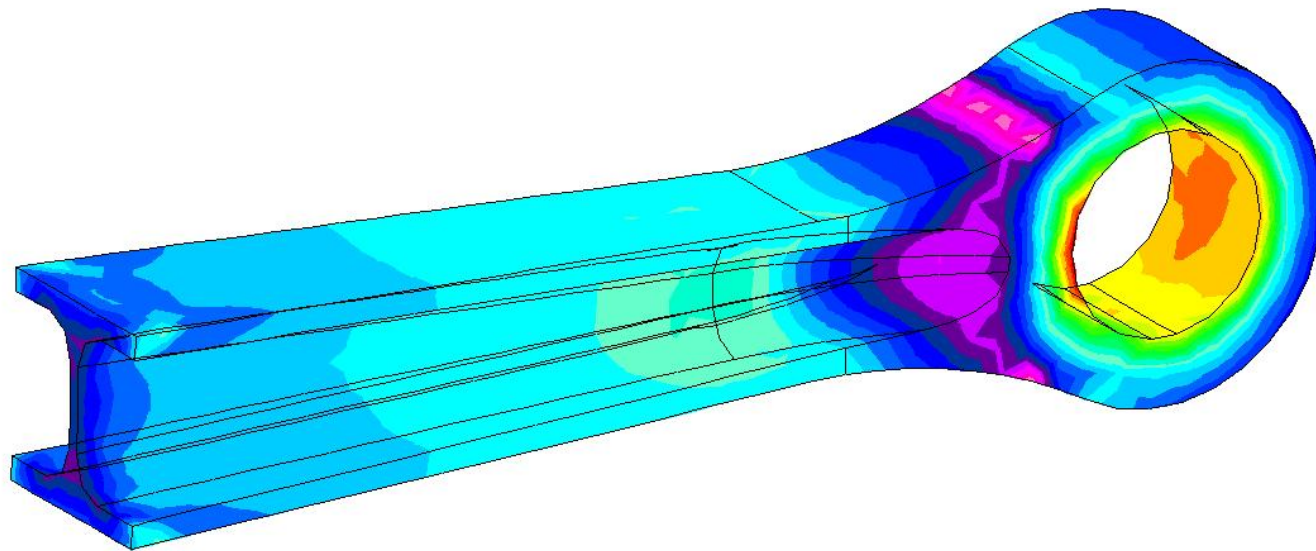
WEST8



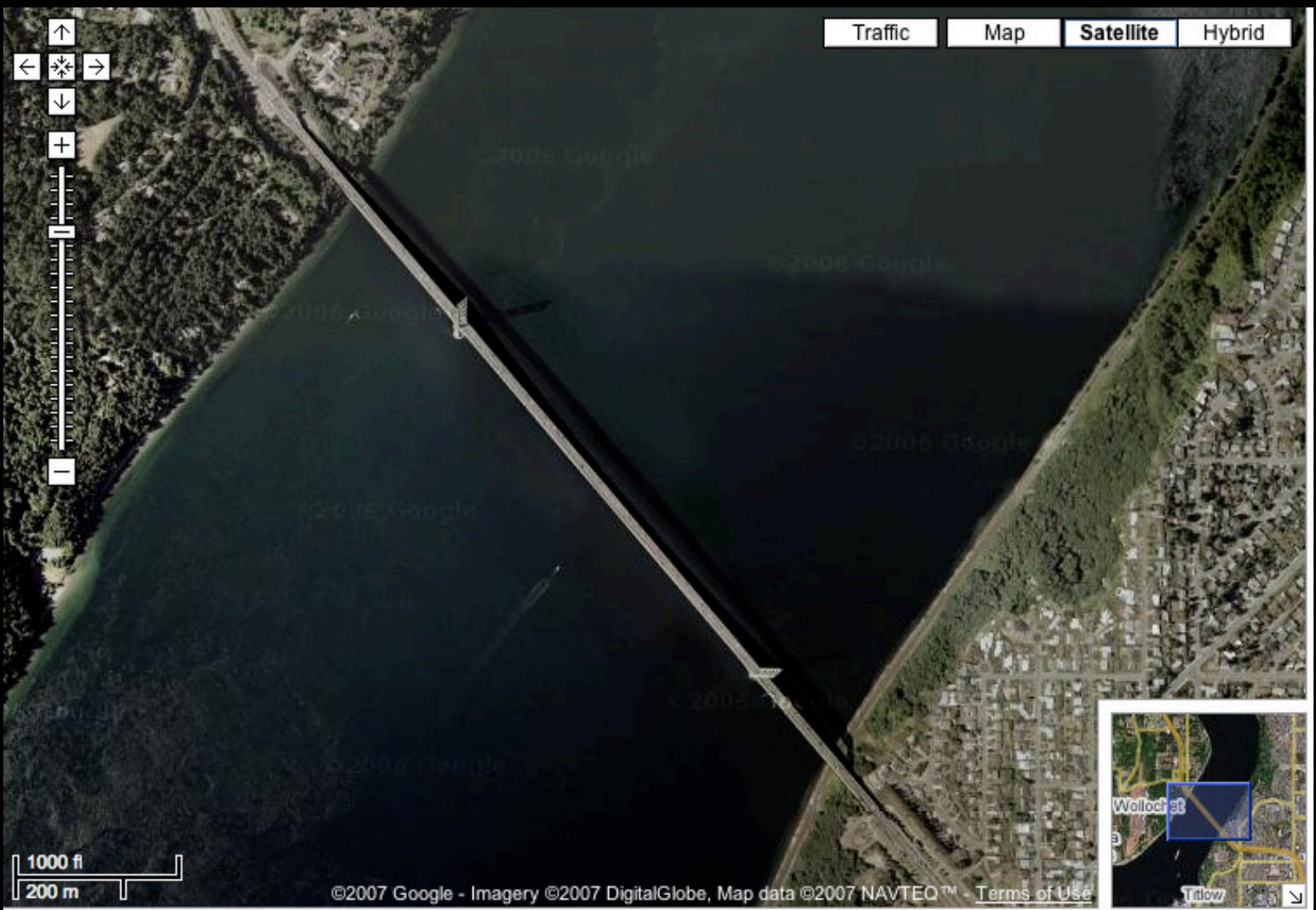
Equivalent Stress
x 1e3 psi
Max: 1.104e+003
Min: 1.576e+000
1/31/2007 6:10 PM







Material	
S235JR	
Yield Point 235.00	
Von Mises	
[N/mm ²]	
max	238.01965
	209.19926
	200.27927
	191.55918
	182.79909
	173.91899
	165.09890
	156.27881
	147.45872
	138.63863
	129.81854
	120.99845
	112.17835
	103.35826
	94.53817
	85.71808
	76.89799
	68.07790
	59.25781
	50.43771
	41.61762
	32.79753
	23.97744
	15.15735
min	6.33726

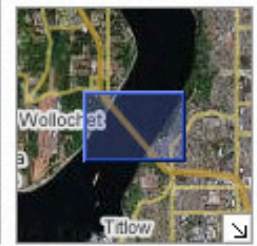


Traffic Map **Satellite** Hybrid

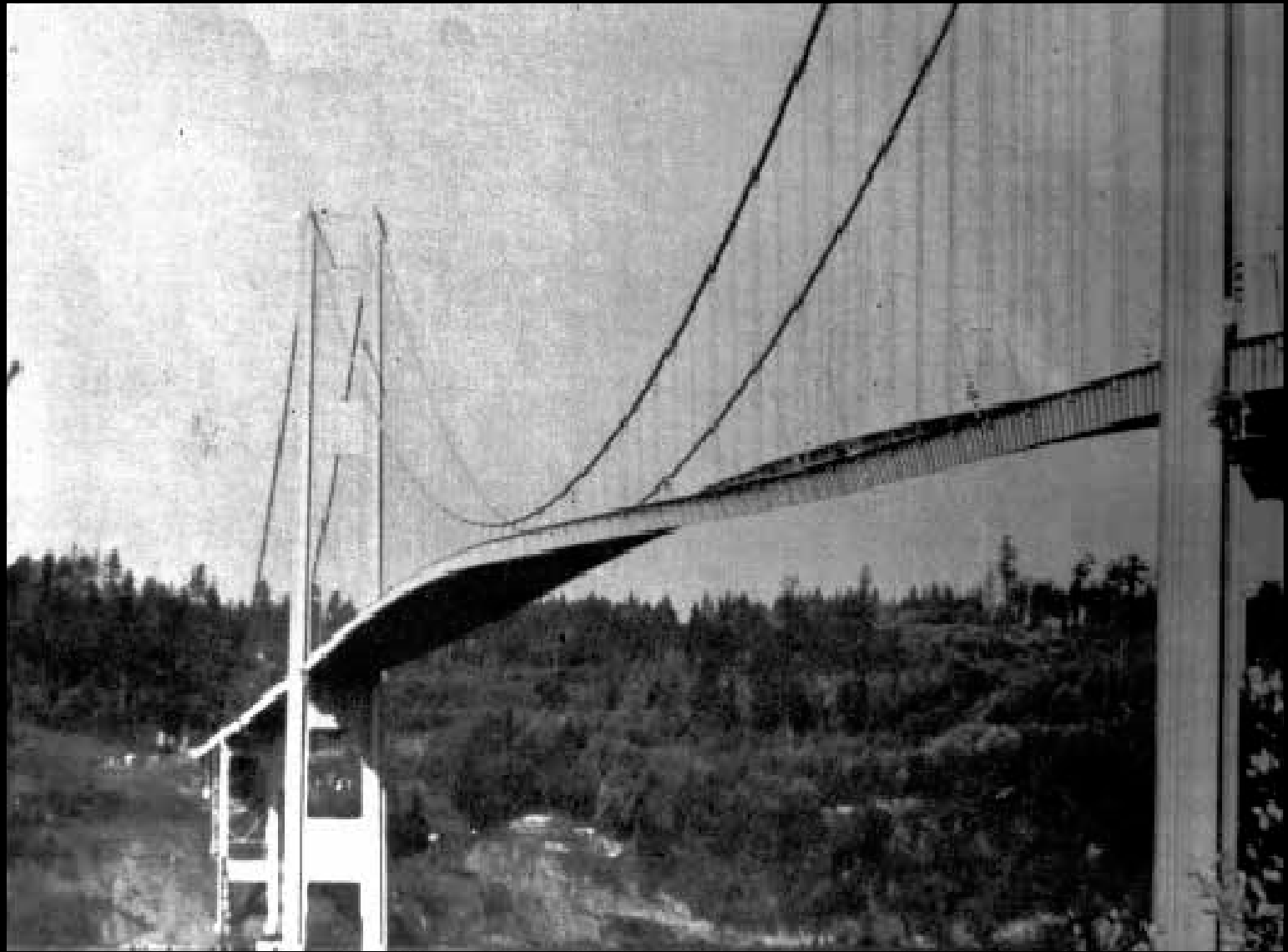


1000 ft
200 m

©2007 Google - Imagery ©2007 DigitalGlobe, Map data ©2007 NAVTEQ™ - Terms of Use



 Open Notebook







TACOMA NARROWS NEWSREEL

YOUTUBE





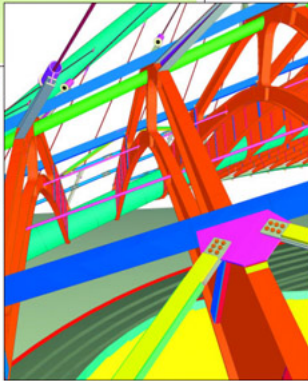
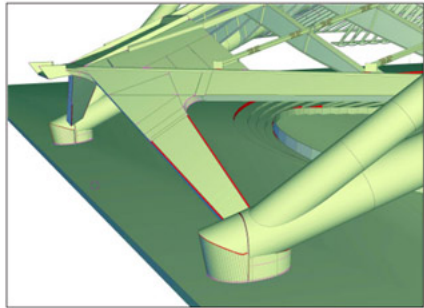
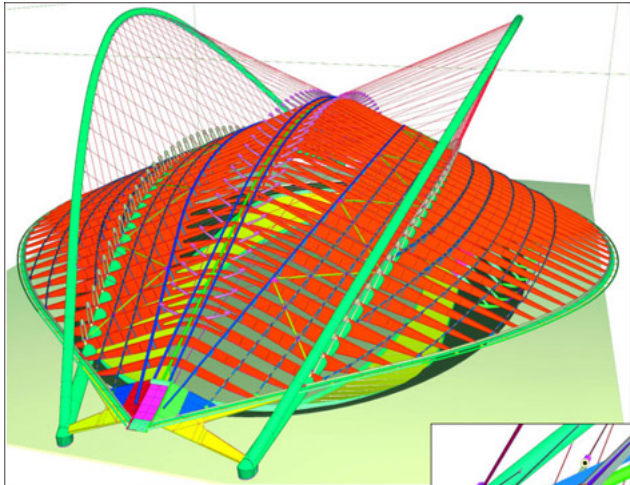


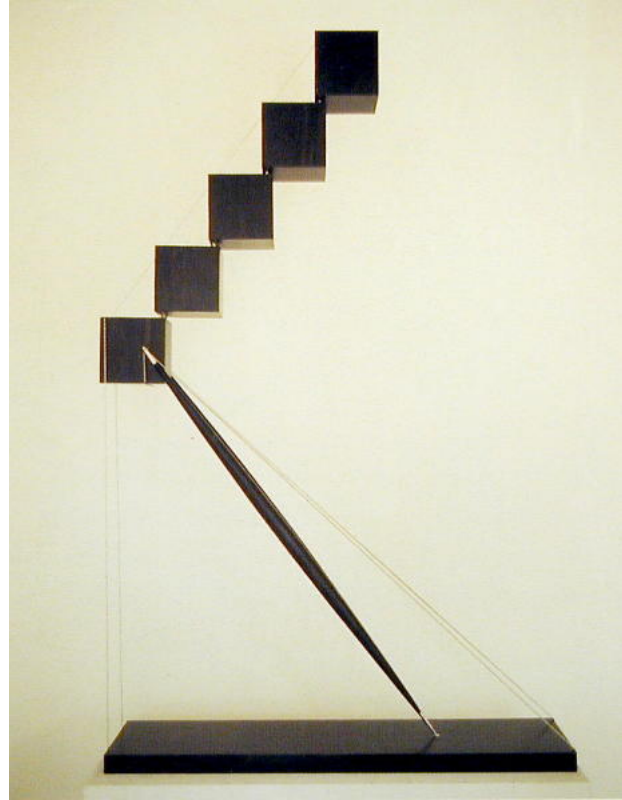
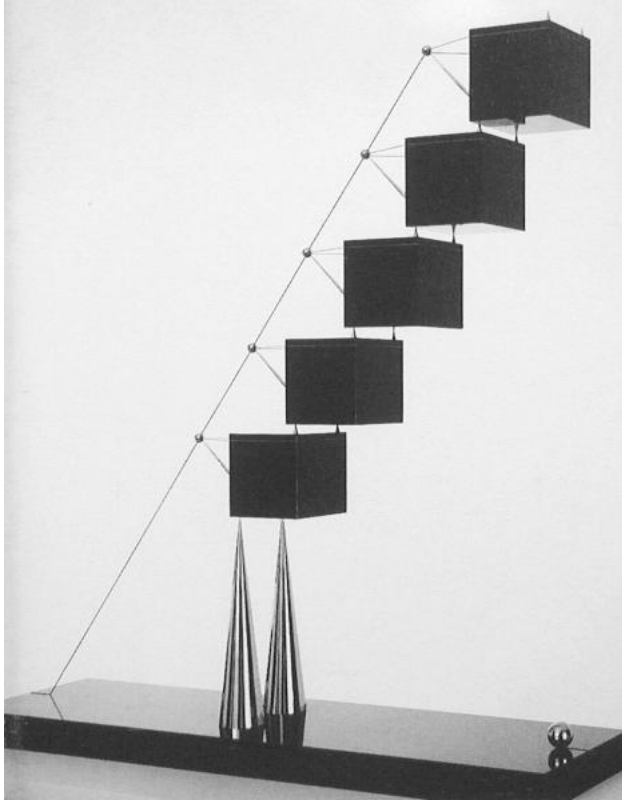
CALATRAVA

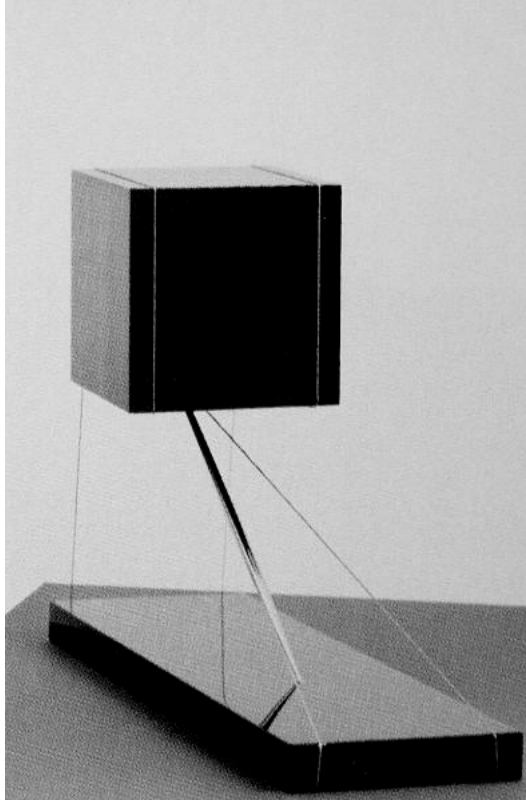


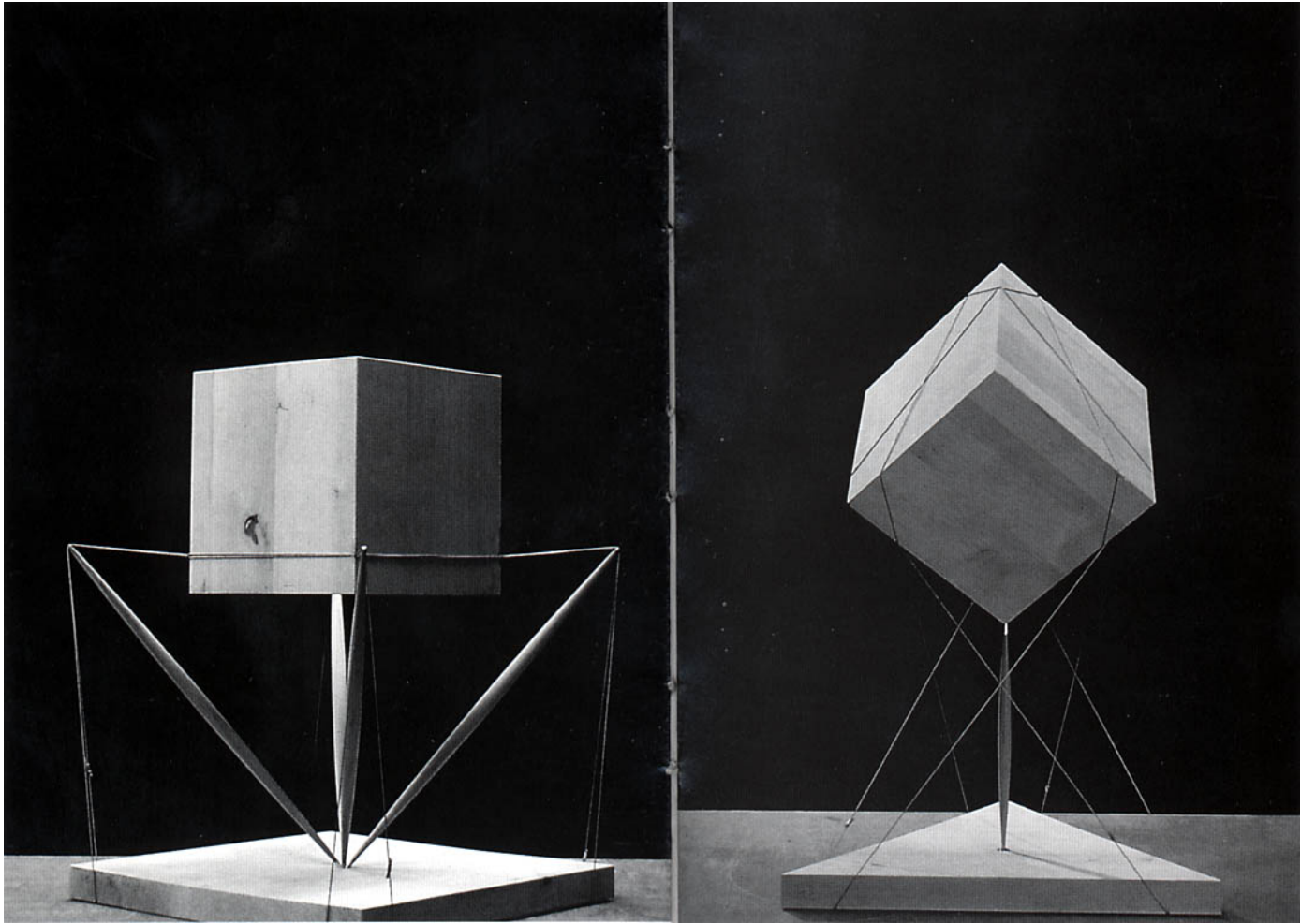
~~CALATRAVA~~

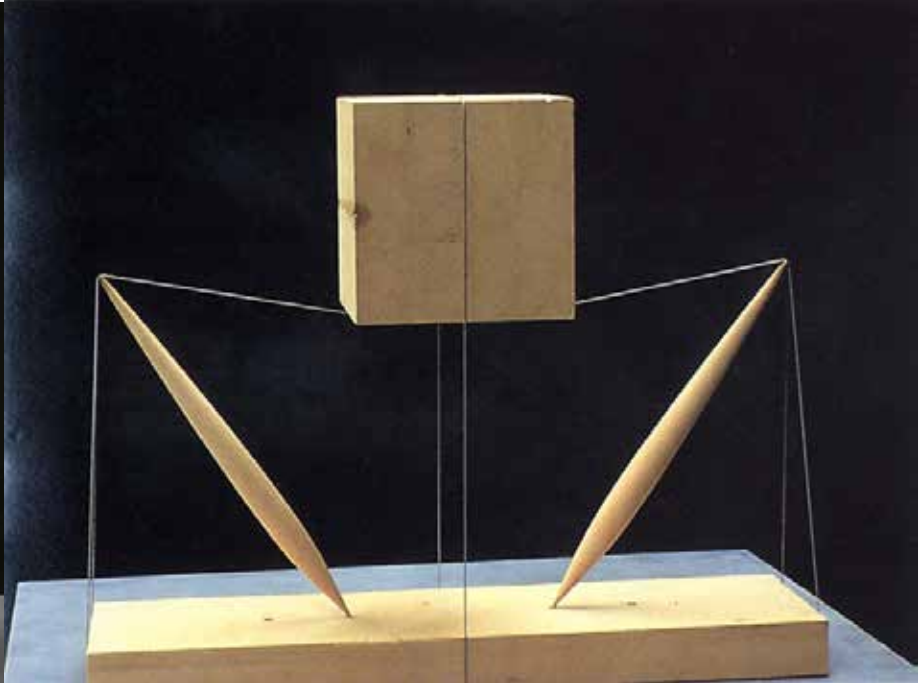


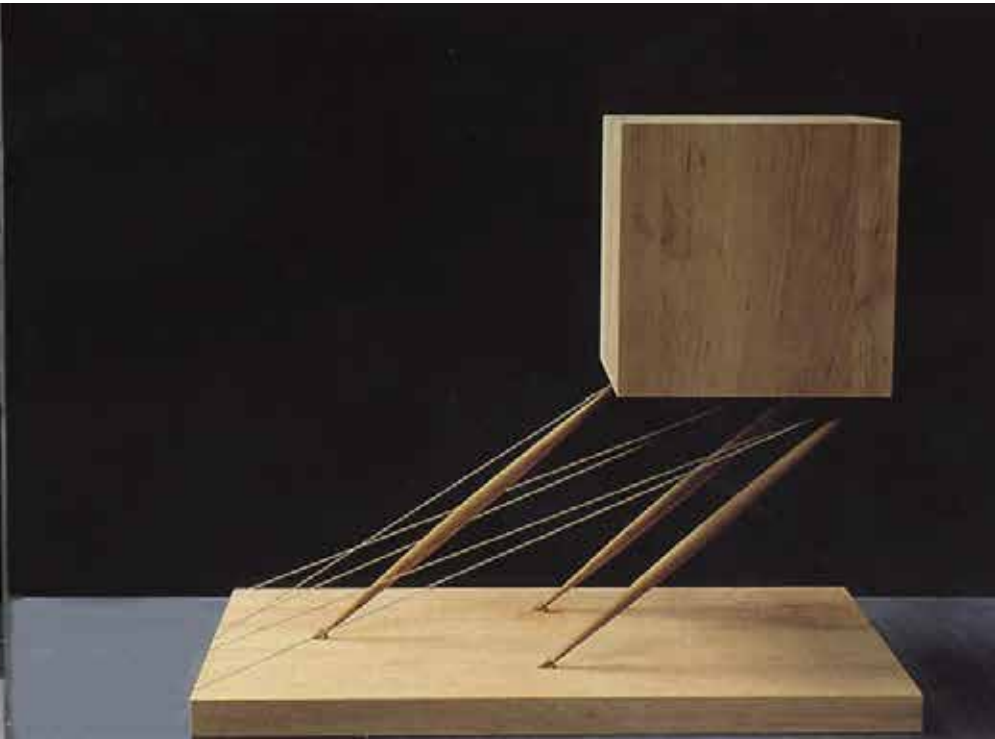
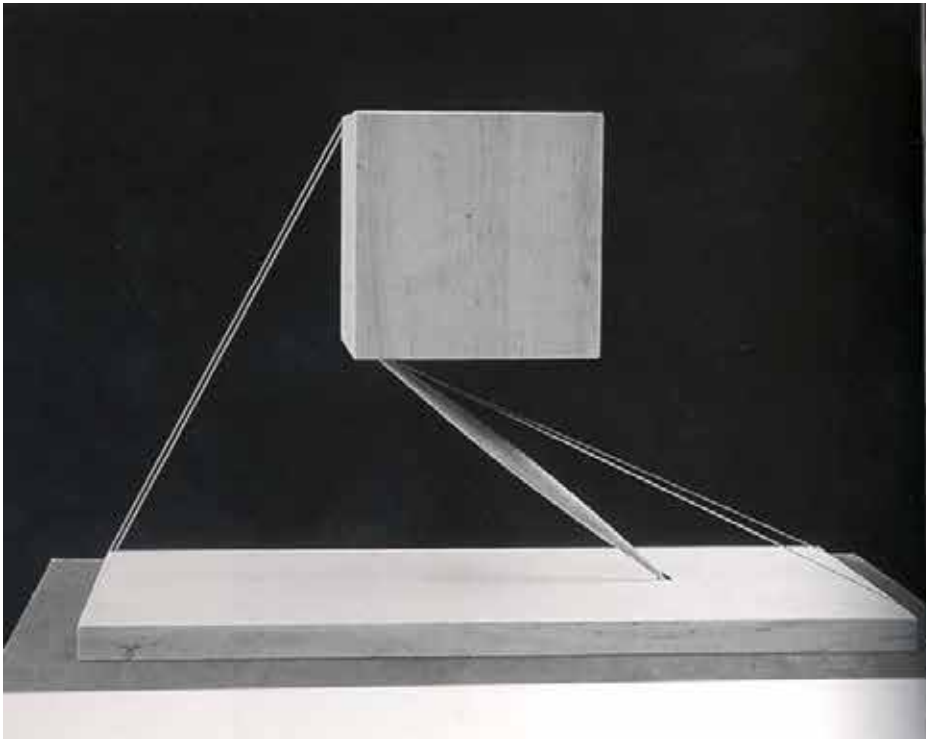








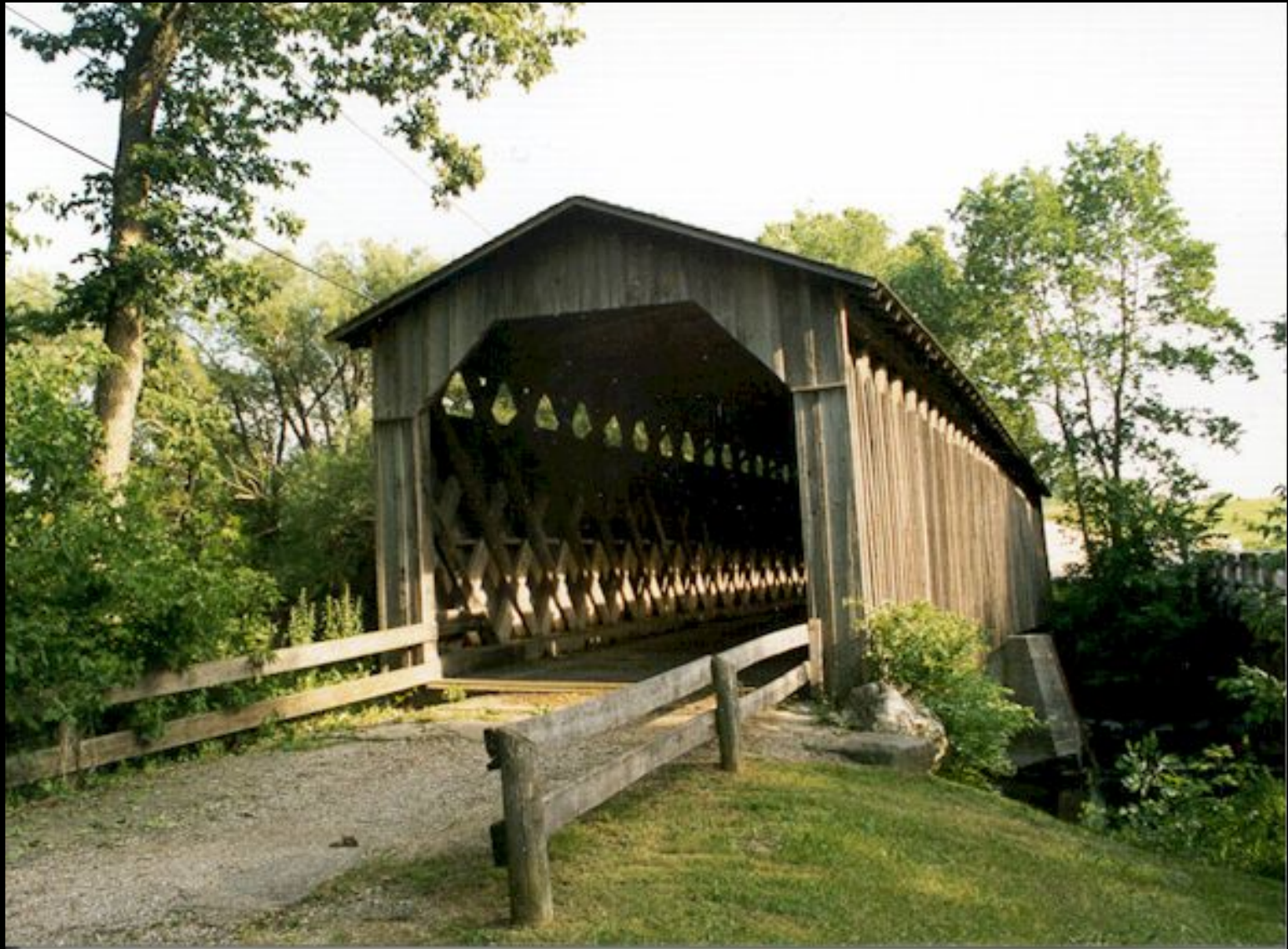




COVERED











PALLADIO

















HOUSE















PONTE VECCHIO



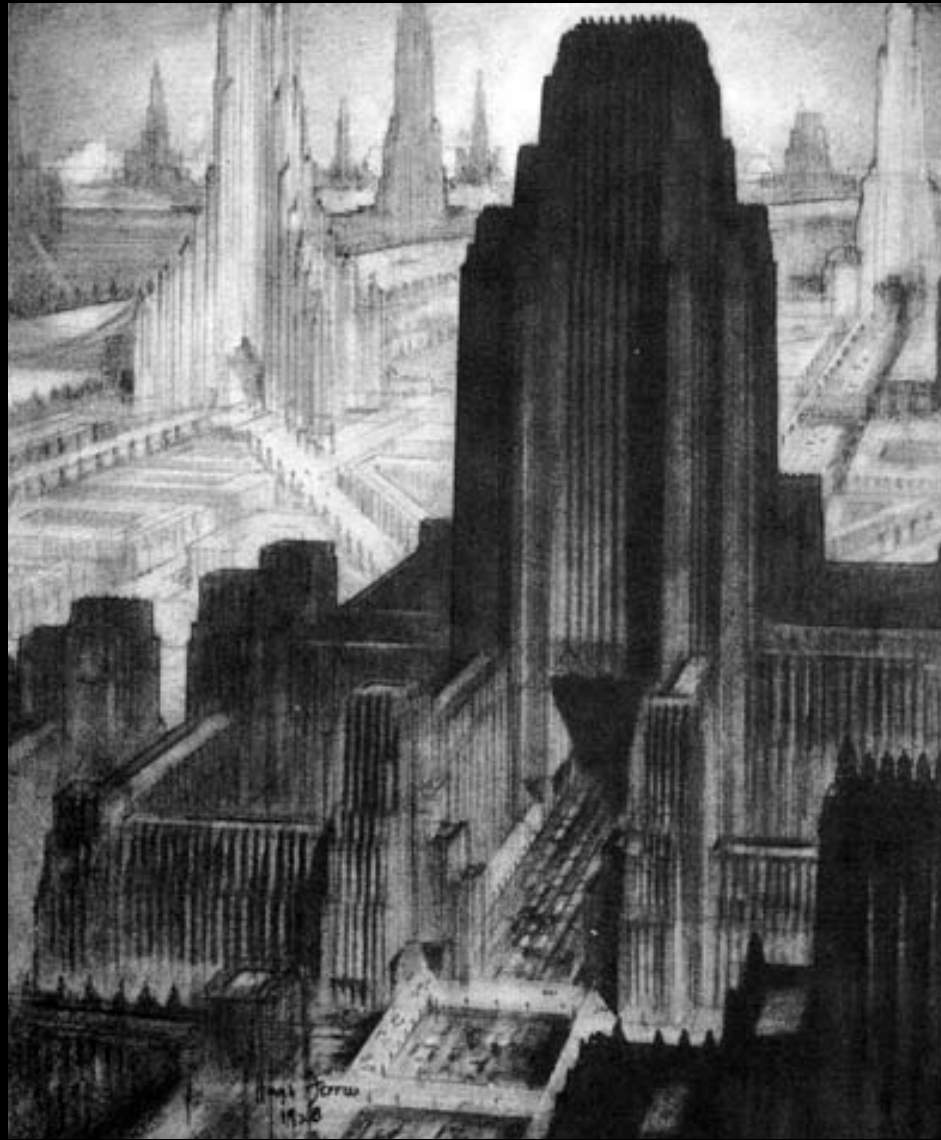


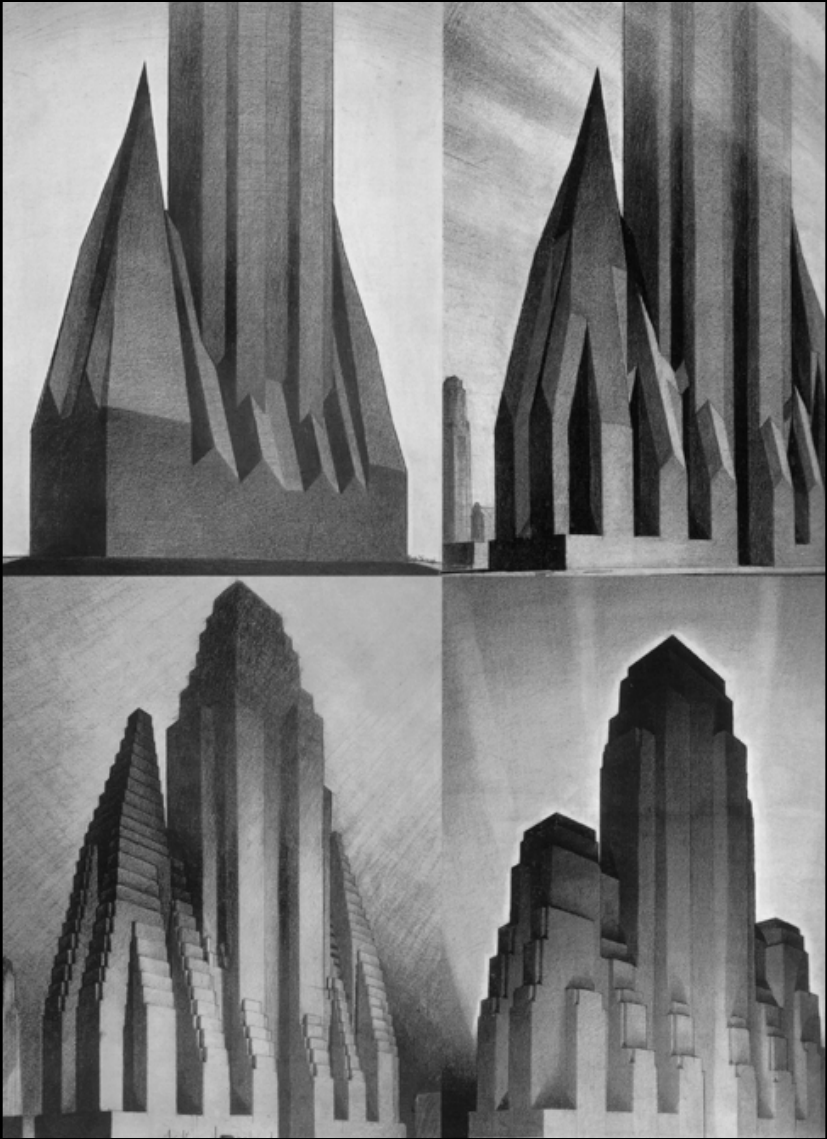


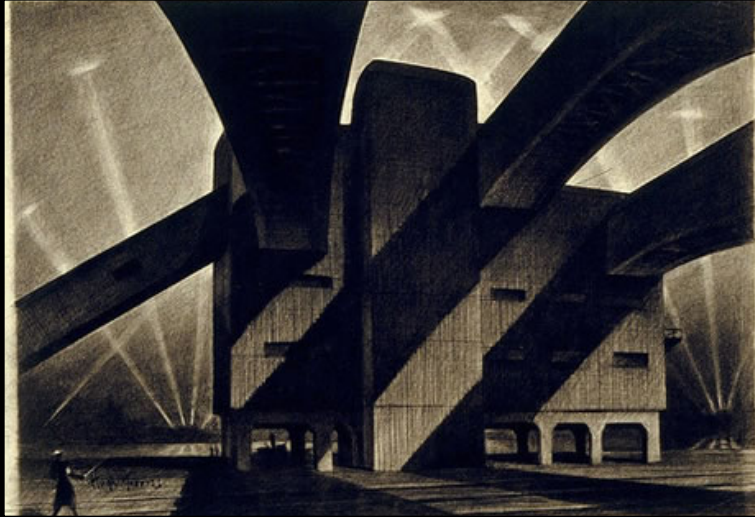
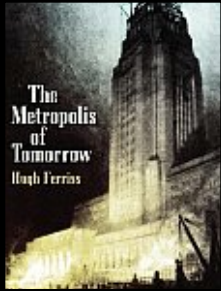


HUGH FERRISS







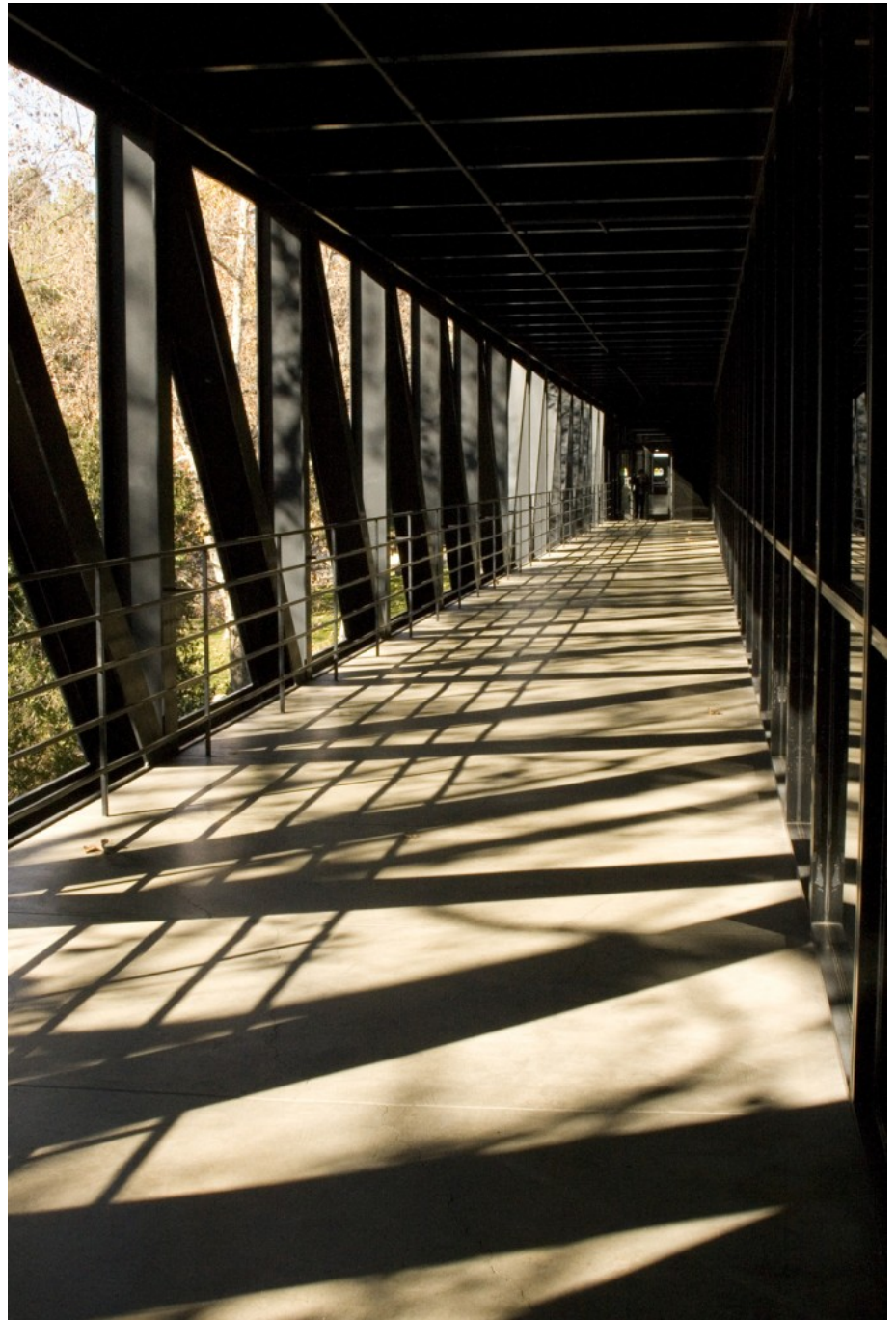


CRAIG ELLWOOD









LIGHT













FOSTERS + ARUP

AQUEDUCT



MOTORWAY















TALL









LE VIADUC DE MILLAU

YOUTUBE

ART. M. HEIZER









MALAYSIA





© malaysiahotelreview.com

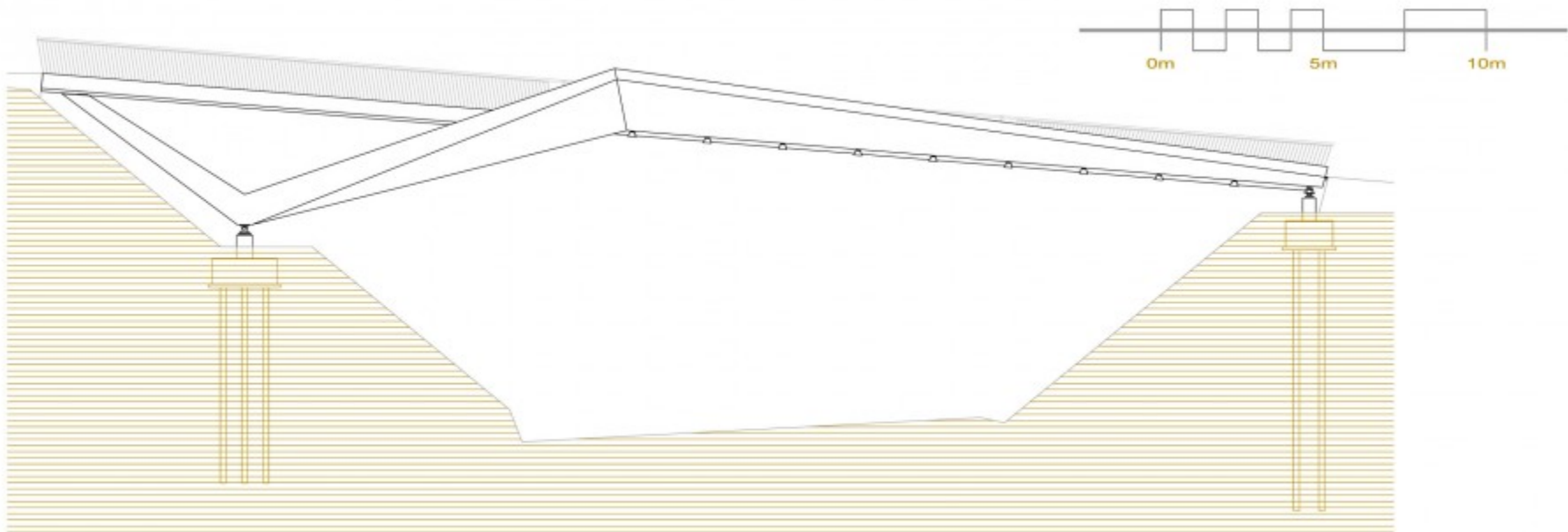


© malaysiahotelreview.com

SPAIN

ALFA POLARIS



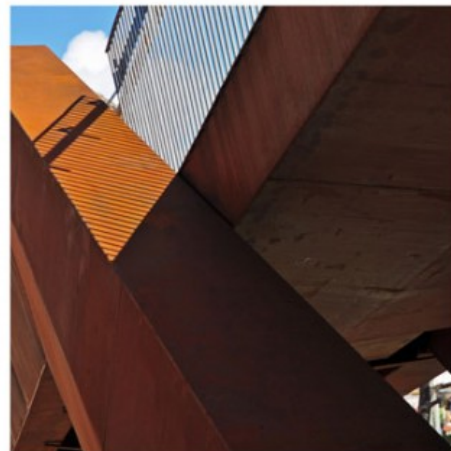
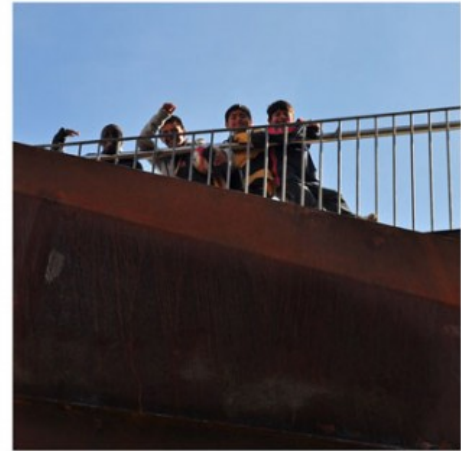
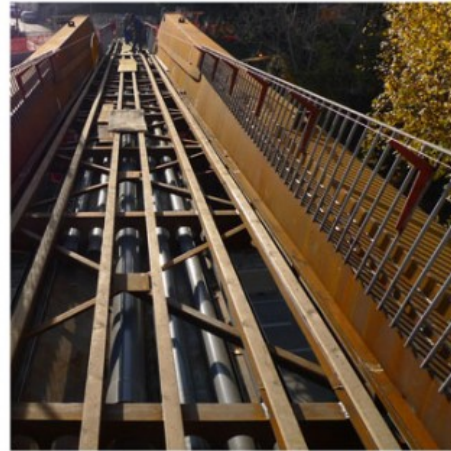
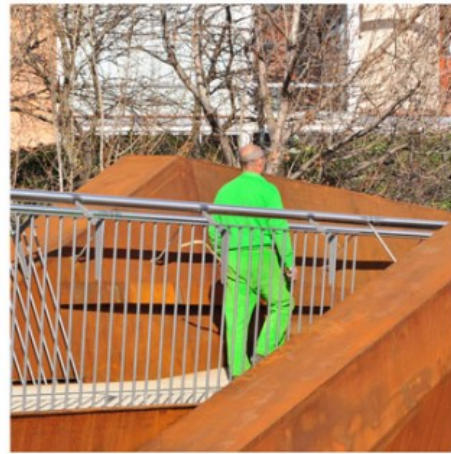


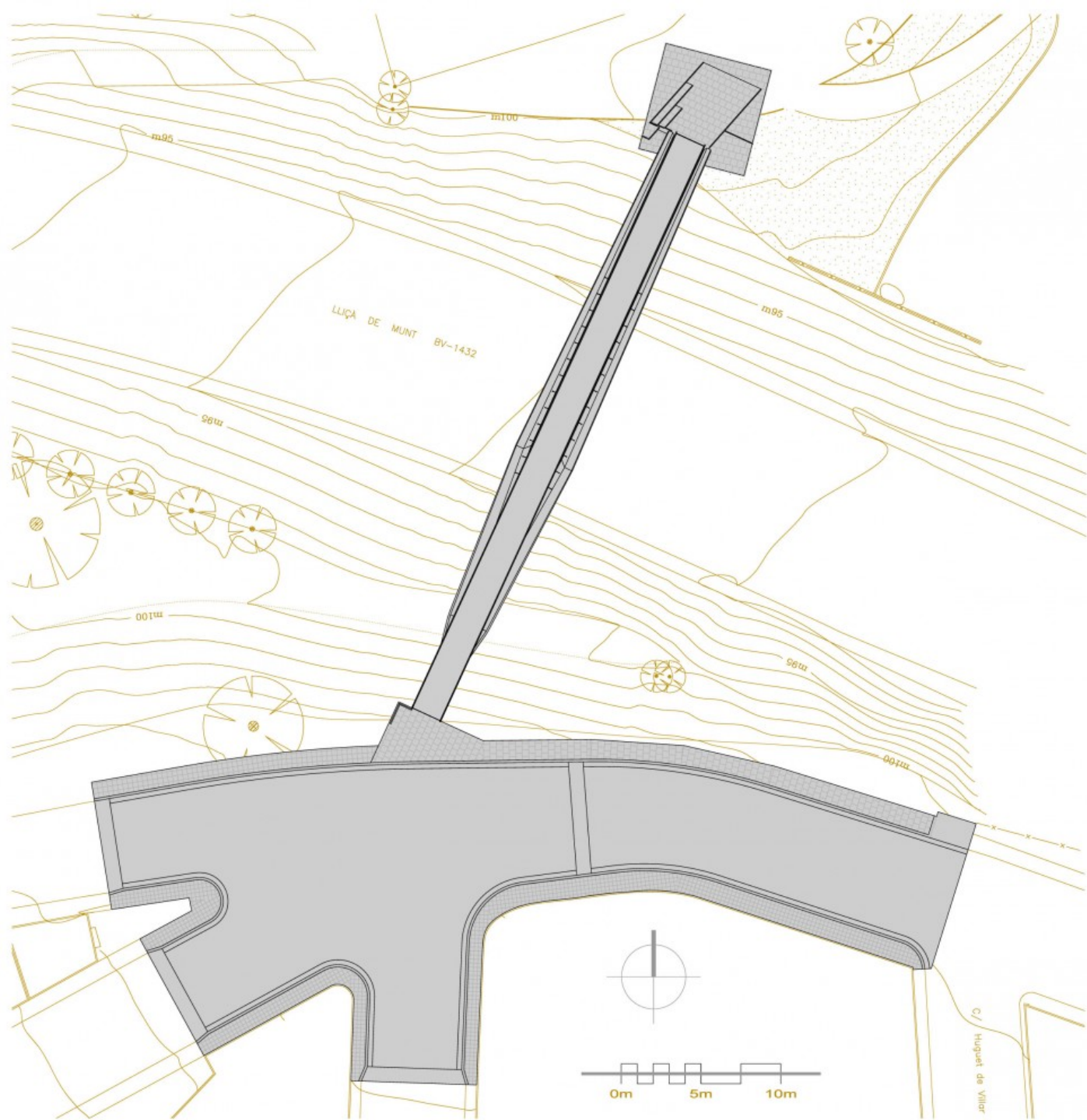
EAST ELEVATION (scale 1/150)







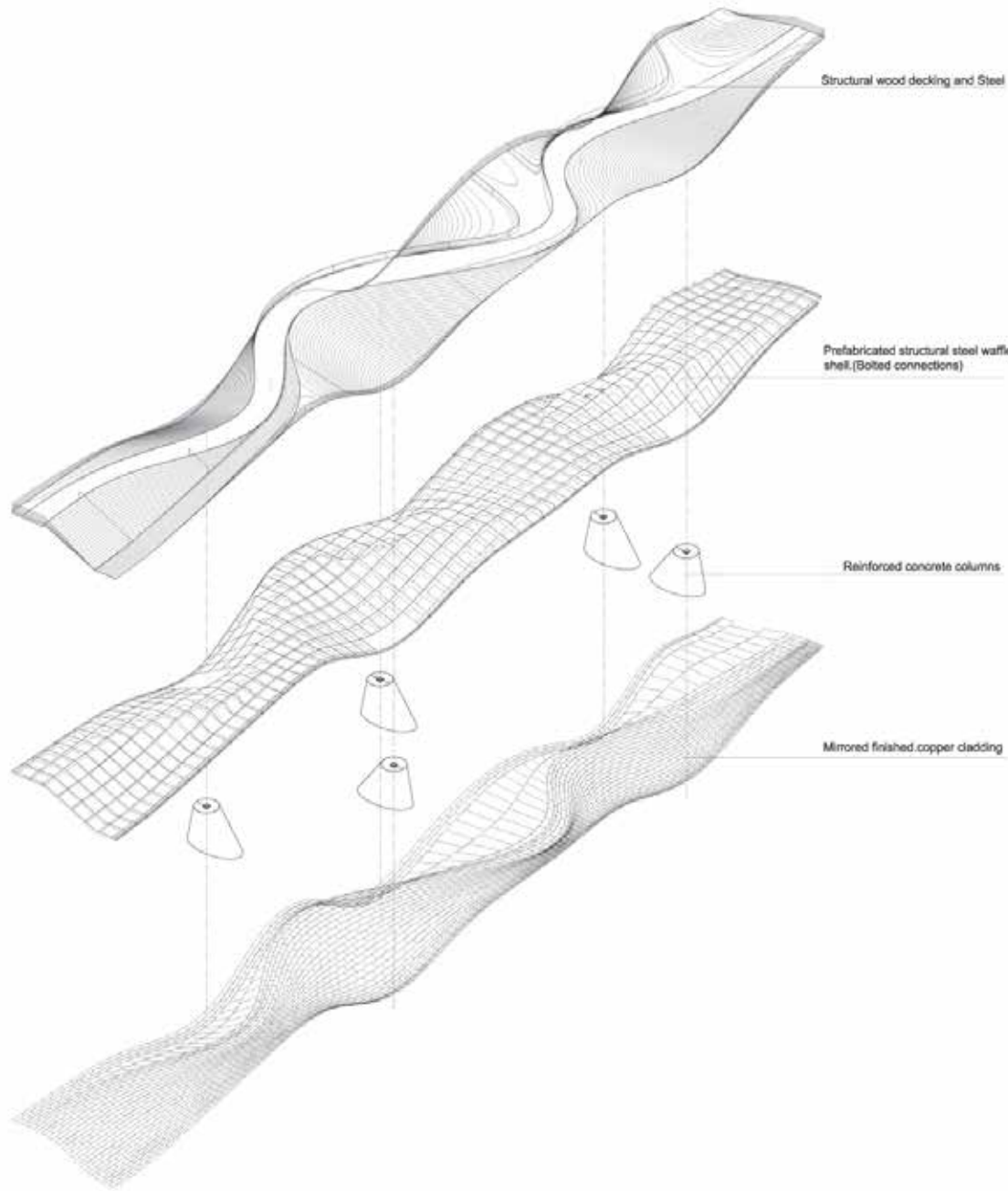




JA.STUDIO.INC





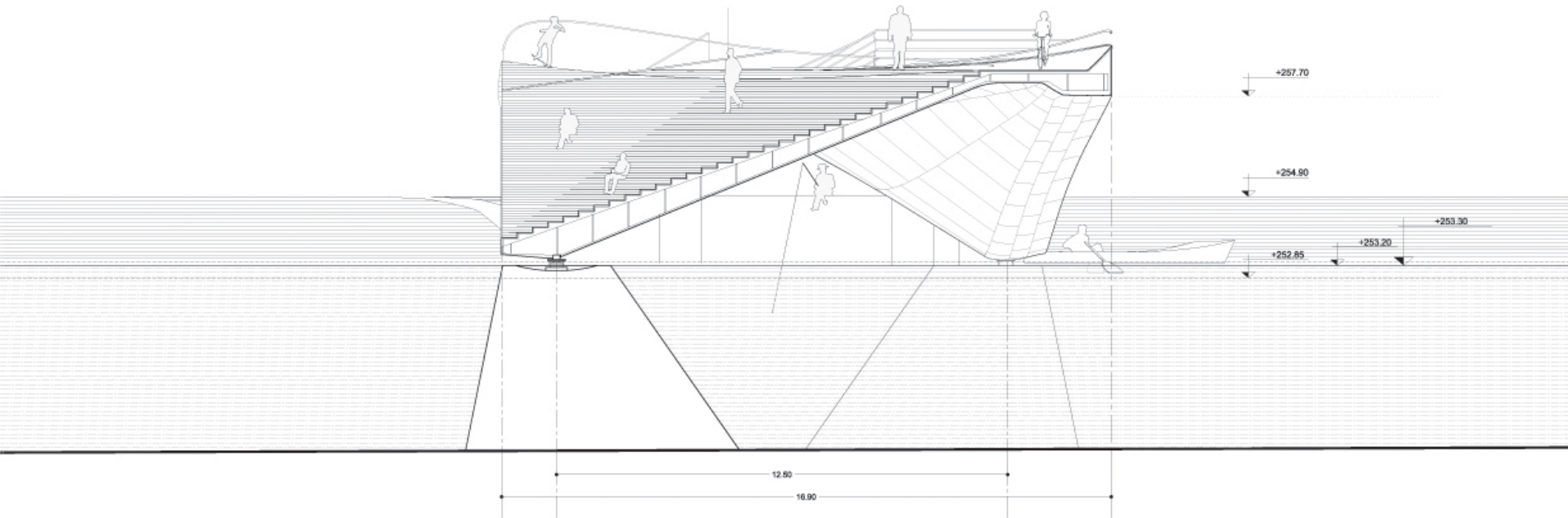


Structural wood decking and Steel

Prefabricated structural steel waffled shell (Bolted connections)

Reinforced concrete columns

Mirrored finished copper cladding







ZAHA HADID



ZARAGOZA





JURGEN MAYER H. ARCHITECTS
METROPOL PARASOL

TASK FOR TODAY'S STUDIO:

We will be having a Student Rep meeting at 4pm in the Forum space; if you have any questions or concerns let your student rep know about them before this time.

1. Divide the pages of your notebook in half. Draw a horizon line in the upper and lower halves. Use a single screen if using an iPhone, iPad or similar.
2. Draw a series of 6 two point perspectives exploring the space bounding opportunities that exist between three "F-Shaped" prisms in space. The proportions of the F-shaped prisms should be different in each of your 6 drawings. Use carefully hatched lines to highlight one set of surfaces that exist in parallel planes.
3. For each of the 6 drawings above draw 2 more two point perspectives. The supplementary perspectives will show the F-Shaped prisms and their relationships in space from a different point of view. Use carefully hatched lines to highlight one set of surfaces that exist in parallel planes.
4. Under each perspective drawing write a few words that connect with your relationship to the prisms (e.g. above you, at eye level, below you) and also allude to a theory. The 18 short sentences (3-5 words is recommended) should be different. These sentences could develop those from week one.
5. While you a drawing your tutor will engage you in small group discussions regarding your news articles and design opportunities for bridging your valleys.

Note: throughout the class students will be constructing examples of these perspectives using Sketchup and importing them into CryENGINE3. Or demonstrating techniques for modifying the terrain in CryENGINE3.

QUESTIONS?